

Non-linear ontogenetic shape change in *Cryptolithus tessellatus* (Trilobita) using three-dimensional geometric morphometrics

Melanie J. Hopkins and J. Kirk Pearson

ABSTRACT

A decrease in the rate of cephalic shape change late in ontogeny has been documented for several species of trilobites, possibly associated with the cessation of segment release into the thorax. Qualitative descriptions of the ontogeny of *Cryptolithus tessellatus* Green, 1832, suggest that shape change in the cephalon was strongly influenced by the progressive accommodation of large funnel-shaped perforations (“fringe-pits”) over several molts. The number and arrangement of fringe-pits was established early in ontogeny, however, before thoracic segment release was completed. Due to the unusual and highly convex shape of the cephalon, we use three-dimensional (3D) geometric morphometrics to quantify shape change in this species and determine if there is a rate shift, and at what point in development this shift occurred. Three-dimensional morphometrics was made possible by extracting fixed and semi-landmarks from surface reconstructions of *C. tessellatus* rendered from CT scans of silicified specimens. Results show that the cephalon continued to change shape into adulthood, but that a threshold model with a rate shift associated with the cessation of new fringe-pits is best supported. 2D landmarks taken from the dorsal view fail to capture the dramatic change in convexity of the cephalon during development, but model comparison results are consistent with those based on the 3D landmark dataset, allowing comparison of this aspect of ontogenetic change with other species. Based on these comparisons, it appears that 1) trajectories are often better characterized by threshold models than simple linear regression models; 2) the timing of shifts may not be phylogenetically conserved.

Melanie J. Hopkins. Division of Paleontology, American Museum of Natural History, Central Park West at 79th Street, New York, NY 10024, USA. mhopkins@amnh.org

J. Kirk Pearson. Department of Geology, Oberlin College, Carnegie Building, 52 West Lorain Street, Oberlin, OH 44074, USA. kirkpear@gmail.com

Keywords: trilobites; CT scanning; silicification; functional morphology; ontogeny

Submission: 23 March 2016 Acceptance: 25 August 2016

INTRODUCTION

Trilobites molted throughout all stages of development, and by virtue of being heavily biomineralized, each shed exoskeleton had the potential to be preserved in the fossil record. Because of this, larval and juvenile trilobites have a good fossil record, and it is possible to reconstruct the morphological changes that occurred throughout ontogeny and compare this across species and to other arthropods. Larval and juvenile characters have been useful for phylogenetic reconstruction (e.g., Fortey and Chatterton, 1988; Edgecombe, 1992; see also Park and Choi, 2011a), and quantification of ontogenetic change has been crucial for studies of heterochronic shifts during speciation (e.g., Gerber and Hopkins, 2011) and for studies of growth and segmentation (e.g., Fusco et al., 2004; Hong et al., 2014). One feature of trilobite ontogeny that has emerged from both qualitative and quantitative descriptions is that ontogenetic change is generally progressive and gradual even though change is achieved incrementally. For example, many species show a posterior shift in the placement of the palpebral lobes (which rest above the eyes) throughout ontogeny, and this change progresses over many molts. However, there is also frequently a decrease in the amount of shape change late in development, and it has been suggested that this shift could be associated with the cessation of segment release into the thorax (e.g., Kim et al., 2002; Hopkins and Webster, 2009; Park and Choi, 2011b; Park et al., 2014).

Cryptolithus tessellatus Green, 1832, is a trinucleid trilobite characterized by a cephalic fringe with large funnel-shaped perforations (Figure 1). These perforations have traditionally been referred to as pits; hereafter we refer to them as “fringe-pits” to distinguish them from other types of pits. Previous work has shown that 1) the fringe-pits were added to the cephalon over several molts in a consistent order; and 2) addition of new fringe-pits ceased before segment accretion ceased (Whittington, 1959, 1968; Chatterton et al., 1994). Based on this, we expect that the rate of shape change in the cephalon during ontogeny was influenced by the accommodation of the fringe-pits. In this study, we quantify shape change in the cephalon of *Cryptolithus tessellatus* in order to determine if the ontogeny of this species is better characterized by 1) a shift in the rate of change late in ontogeny, as expected based on other trilobite studies; or 2) a shift in the rate of change when the addition of new fringe-pits ceased.

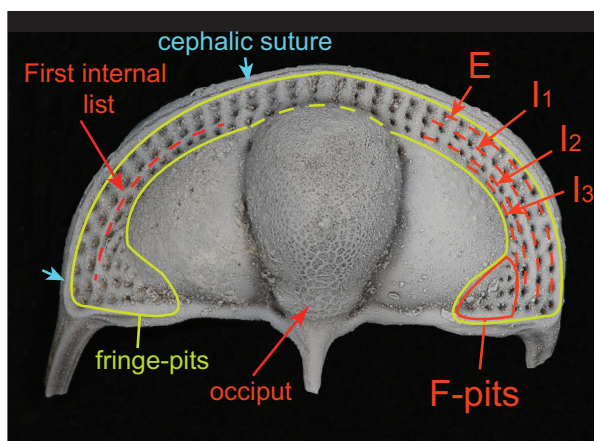


FIGURE 1. Cephalon of *Cryptolithus tessellatus* (AMNH FI-101479) showing morphological terms used in this paper, following Whittington (1968) and Hughes et al. (1975). Concentric arcs are labeled according to their placement relative to the girder (expressed on the ventral side): E = external; I = internal. “Fringe-pits” are circled in yellow; the “F-pits” represent a subset of these interior to the labeled concentric arcs. Specimen is 6.6 mm long.

We use geometric morphometric methods to quantify shape change in the cephalon of *Cryptolithus tessellatus*. Trilobites have frequently been the focus of geometric morphometric studies because of their complex exoskeletal morphology and robust fossil record, but thus far studies have been restricted to two-dimensional (2D) datasets (Appendix 1). In almost all cases, 2D landmarks were digitized from photographs of the dorsal view of the cranidium/cephalon or pygidium. These studies necessarily assumed that 2D landmark configurations would be adequate for capturing the majority of the shape change of interest. Although this assumption is not unreasonable for taxa that are relatively flat, *Cryptolithus tessellatus* cephalons have considerable convexity that is not captured in dorsal view alone, most notably convex glabellar and genal areas. Because of this, we considered *C. tessellatus* a good candidate for the first application of 3D morphometrics to trilobite ontogenetic studies.

A major obstacle to applying 3D morphometrics to trilobites is their size, particularly early ontogenetic stages. Tools for directly collecting 3D landmarks (e.g., microscribes) are too imprecise relative to the average size of the trilobite specimen, and methods for rendering 3D models (e.g., high-resolution laser scanning or x-ray computed tomography [CT scanning]) are expensive, limited in availability, and may require extensive post-processing, especially when the latter requires pixel-

by-pixel selection in order to separate the specimen from the surrounding rock matrix. One solution to the challenges posed for applying 3D morphometrics is to focus on silicified specimens. Silicified material has great potential for developing 3D models of trilobites, particularly using CT scanning, because individual specimens can be liberated completely from the surrounding matrix, so that all sides of the specimen are visible. Therefore, the density difference between the silica and surrounding air make both scanning and post-processing much less time consuming. In addition, CT scanning technology can image specimens that are tens to hundreds of microns in size, as is the case with larval and early juvenile trilobite specimens.

MATERIALS

Silicified specimens of *Cryptolithus tessellatus* were obtained from collections at the American Museum of Natural History (AMNH FL-81234 and AMNH FL-81241). Both collections comprise residues from acid dissolution of a single limestone sample (block M-1), collected by Marshall Kay from the Martinsberg Shale at a locality north of Spring Hill, Virginia; thus the specimens are sampled from a “single population” to the extent possible in the fossil record. Trilobite species obtained from dissolving the limestone block were previously described by Chatterton et al. (1990, 1994); Chatterton et al. (1994) also noted that the sampled locality must have been somewhere near locality 11 or 12 of Whittington (1959). Thirty undeformed specimens were selected as candidates for CT scanning, ranging in size from 0.5 to 9 mm in cephalic length (excluding the occipital spine). The largest specimens are of the same size as large holaspid *Cryptolithus tessellatus* known from other localities (e.g., Whittington, 1941, 1968), so these specimens may be assumed to span the entire ontogeny of *C. tessellatus* even though articulated material is not available. Several specimens include the lower lamella and genal spine (e.g., Figure 1).

METHODS

CT Scanning

Each specimen of *Cryptolithus tessellatus* was adhered to the inside lid of a small acrylic box or tube with tragacanth gum, a water-soluble adhesive. Specimens were scanned at the Microscopy and Imaging Facility at the American Museum of Natural History using a GE Phoenix v|tome|x scan-

ner with 240kv microtube. Additional image post-processing and 3D surface rendering was done using VGStudioMax; surface models were exported as polygon files (.ply).

CT scanning of the silicified material was relatively efficient: it took about 30 minutes to scan each specimen and the AMNH Microscopy and Imaging Facility was able to successfully scan 27 specimens of the 30 selected. Post-processing was minimal because of the high density difference between the silica and the surrounding air.

Geometric Morphometrics

Choice of landmarks. Twenty-four landmarks, 18 semi-landmarks and 21 surface semi-landmarks were digitized using Landmark Editor 3.6, a tool for the placement and registration of coordinates on complex surfaces (Wiley et al., 2007). The first 22 fixed landmarks were chosen because they could be located consistently on each specimen regardless of developmental stage (Figure 2, Appendix 2). In the case of some of these, the specification on a 3D surface representation of the specimen is different than specification of nominally the same landmark from a 2D image of the specimen. For example, the anterior pit located in the axial furrow near the front of the glabella (landmarks 1 and 2) would appear as a dark spot in a photograph, and the coordinates of that spot could be used as the landmark coordinates. However, on a 3D surface model, this same “landmark” is in negative space, essentially floating above the opening to the pit. In order to estimate coordinates associated with these features, we had to select an area directly adjacent: in the case of the anterior pit, we placed the landmark on the periphery at a specified point in relation to the axial furrow. For comparison, we also digitized the apex of the pits on the ventral surface; however, exclusion of these different subsets of landmarks did not influence the overall results and we retained all landmarks in the analyses shown below.

At first glance, the fringe-pits provide a wealth of potential landmarks. However, previous studies have shown that the number of fringe-pits in each concentric arc varies within developmental stages and between localities (e.g., Whittington, 1968). In addition, there is some variation in the placement of fringe-pits; for example, sometimes there is a row of fringe-pits on the sagittal axis and sometimes two rows of fringe-pits on the sagittal axis. Because of this, it is impossible to hypothesize that a particular fringe-pit is homologous with another one on a different specimen. Instead of trying to

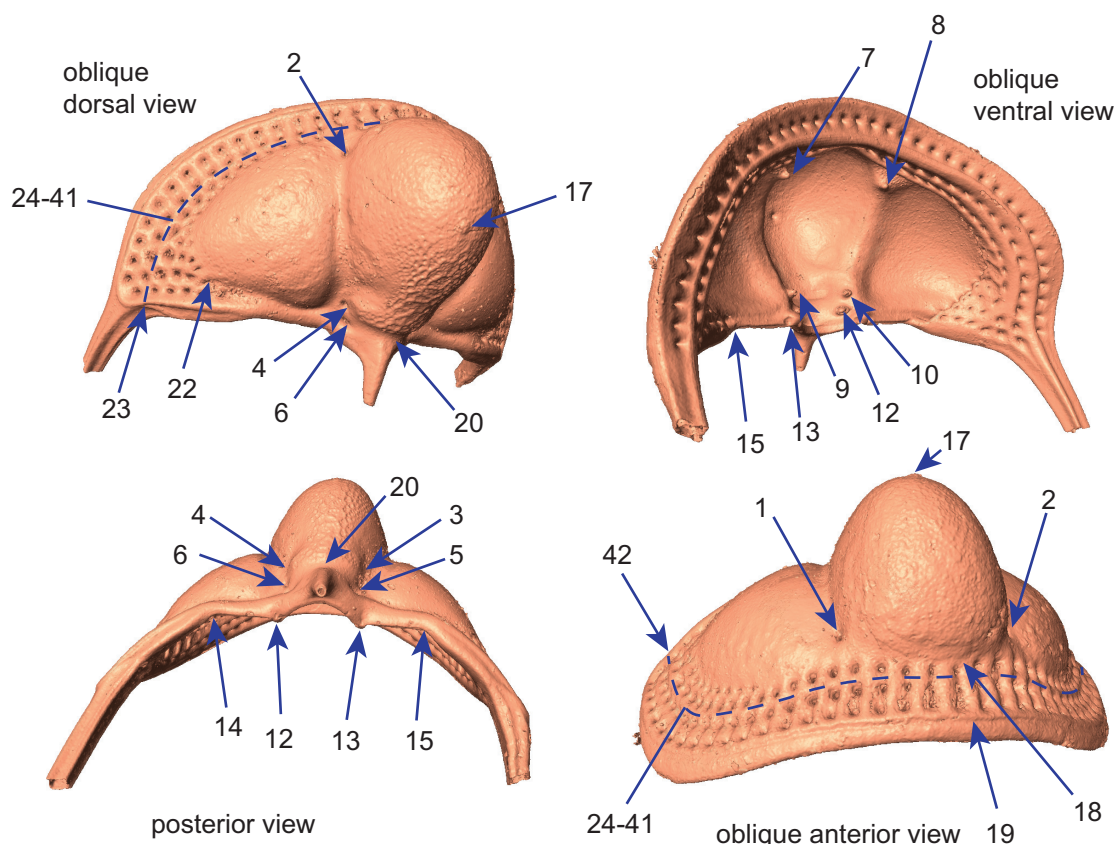


FIGURE 2. Different views of 3D surface model rendering of *Cryptolithus tessellatus* showing placement of fixed landmarks. All landmarks are indicated at least once, with the exception of 11 (paired with 12). Unpaired landmarks = 17–20; paired landmarks = 1–16, 21–23, 42; semi-landmarks along first internal list shown by dashed line and represented by landmarks 24–41. See Appendix 2 for full description of all landmarks. Surface reconstruction is of AMNH FI-101479.

place landmarks at particular fringe-pits, we placed semi-landmarks along the first internal list; the trajectory of the list as it crosses the posterior border on either side was treated as two additional fixed landmarks at each end of the curve (points 23 and 42, Figure 2, Appendix 2). Thus the curve described by these semi-landmarks captures the shape of the concentric arcs of fringe-pits without relying on dubious homologies. We chose the first internal list because it is often more strongly expressed than the girder list in *Cryptolithus tessellatus* and because it was preserved across almost all of the scanned specimens (in contrast, some specimens were missing the postero-lateral corners, making it impossible to place landmarks along the entire cephalic border). Because the list runs internally to I_2 , it can be digitized only from specimens with at least E and I_1 (meraspid degree 2 and larger, see Discussion).

The glabella, and to a lesser extent the genal lobe, is highly convex. However, there are almost

no features on these surfaces that can serve as landmarks. Instead we extracted surface semi-landmarks from these features. In Landmark Editor, this is accomplished by placing “patches” over the surface of interest and then specifying the number of landmarks that should be extracted across it. The patch is a grid defined by nine landmarks, which must be placed manually. For the glabella, we were able to identify nine landmarks that could be placed consistently (Figure 3). Along each line of the grid so defined, we extracted five landmarks, for a total of 25 landmarks spread out across the surface of the glabella anterior to the occiput. Four of the landmarks in this patch overlapped with five of the fixed landmarks, so the redundant landmarks were deleted from the dataset, and the remaining 21 landmarks were treated as surface semi-landmarks. Treating all nine hand-placed landmarks as fixed landmarks and the remaining 16 as surface semi-landmarks instead had a negligible effect on the superimposition, and thus did not change the subsequent analyses. Attempts to

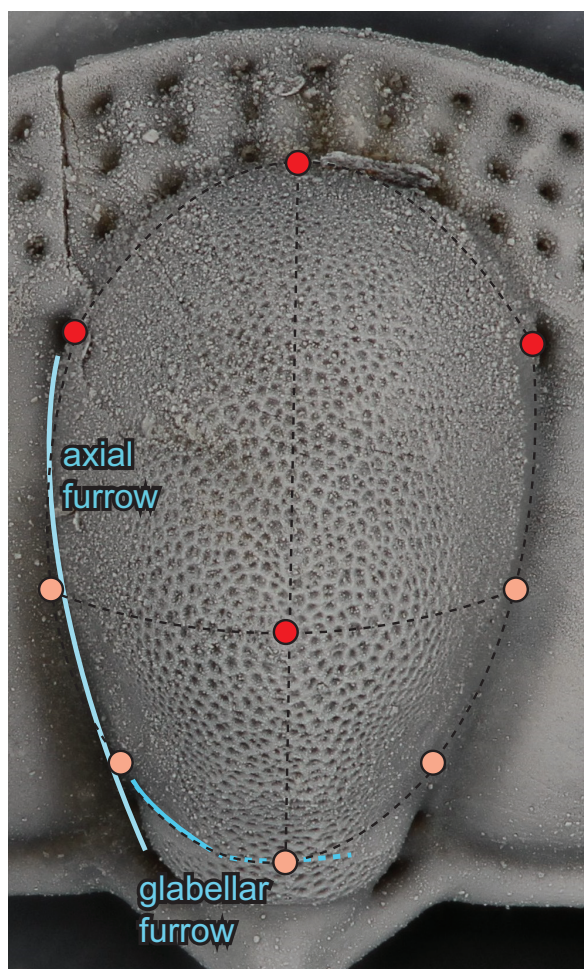


FIGURE 3. Placement of points defining patch on glabella. Points in red are redundant to fixed landmarks as described in the text and Appendix 2. After the surface landmarks were extracted using Landmark Editor, the redundant landmarks were removed from the final data file. Specimen shown is AMNH FI-101482; specimen is 7.1 mm long.

identify a protocol for placing patches on the genal lobe were unsuccessful because of a lack of reliable features available to pin the patch to. For example, the central point of the grid on the glabella may be linked to the glabellar tubercle but there is no central feature on the genal lobe.

The number of semi-landmarks along the internal list and across the glabella was chosen so that the density of landmarks across the cephalon was uniform. Each specimen was digitized twice in order to assess digitization error. Each landmark was represented by the x-, y-, and z- coordinates of a single pixel, and the set of 67 landmarks was exported as an .nts text file for import into R (R Development Core Team, 2015), at which point redundant landmarks were removed, leaving a

total of 63 landmarks. Raw landmark data is available in Appendix 3.

Analytical steps. Of the 27 scanned specimens, 23 were missing no more than 2 landmarks and were used for the geometric morphometric analysis. Missing landmarks were estimated using the thin-plate spline method of Gunz et al. (2009) and implemented using the estimate.missing function of the geomorph package ver. 3.0.1 (Adams and Otarola-Castillo, 2013) for the statistical computer language R (R Development Core Team, 2015). In this implementation, a reference specimen is obtained from the set of specimens for which all landmarks are present. Next, each incomplete specimen is aligned to the reference using the set of landmarks common to both, and then the thin-plate spline is used to estimate the locations of the missing landmarks in the target specimen. Other methods of estimating missing landmarks (see Claude, 2008; Gunz et al., 2009) did not alter the results, nor did reducing the dataset to just the specimens with a complete set of landmarks ($N = 20$). The landmark configurations were then re-superimposed using generalized Procrustes analysis. The position of semi-landmarks was optimized by minimizing the Procrustes distance between the reference and the target specimen as implemented in the gpgen function in geomorph. Digitizing error was assessed visually using principal components analysis and any outlier specimens were re-digitized. Once digitizing error was minimized (in this case, to the point where the average Procrustes distance between replicates was 0.027 while the average Procrustes distance between specimens was 0.092), all replicates were averaged, and the average Procrustes coordinates were used for all subsequent visualization and analysis.

Allometric curves were constructed by plotting Procrustes distances between each specimen and the smallest specimen against the natural log of centroid size (e.g., Hopkins and Webster, 2009), where centroid size is the square root of the sum of squared distances between each landmark and the centroid. We fitted three threshold models, one with a break at the size range where no more fringe-pits were added (natural log of centroid size = 2.3), one with a break at the size range where specimens are known to have the full complement of thoracic segments (natural log of centroid size = 3.3), and one with a breakpoint at each. These were compared with a fitted linear regression model. The best model was selected using Akaike's Information Criterion corrected for small sample size (AICc), and AICc weights were used to

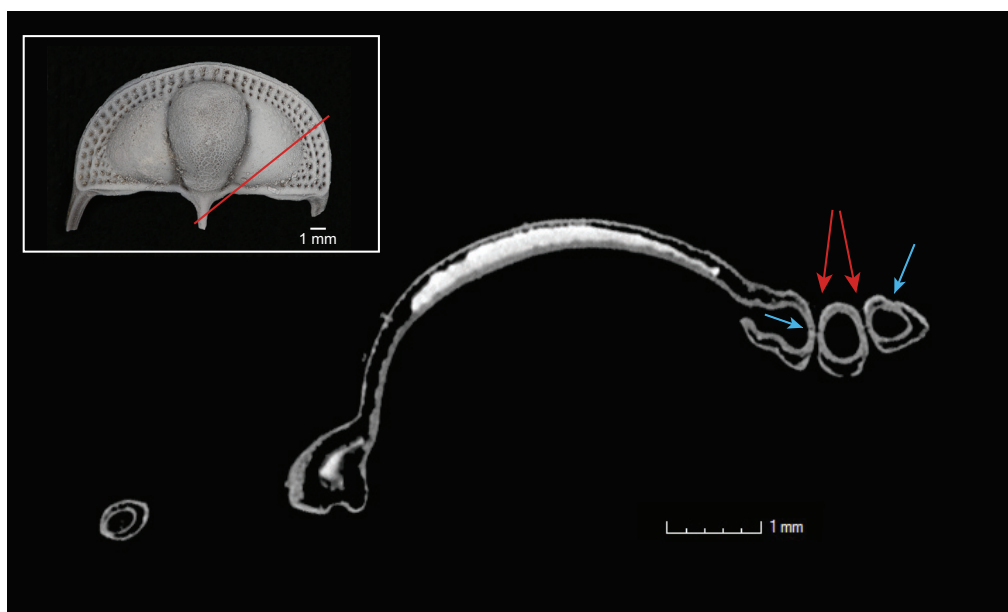


FIGURE 4. Slice through volume rendering of *Cryptolithus tessellatus* (AMNH FI-101479), shown in dorsal view in inset. Red line in inset shows the orientation of the slice across the specimen. Bright white area is sediment trapped within the bilaminar structure of the cephalon. Blue arrows point to suture between upper and lower lamellae; red arrows point to fringe-pits.

assess the relative likelihood of each model (Burnham and Anderson, 2002).

RESULTS

The CT scans reveal the bilaminar structure of the trilobite exoskeleton as well as the structure of the fringe-pits, which are funnel-shaped with small holes at the base. The fringe-pits on the upper and lower lamellae are in contact with each other at their bases, such that the holes meet, creating a series of small orifices through which water may have been able to pass from one side of the cephalon to the other (Figure 4).

As expected given the targeted sampling of specimens with a large size range, most of the shape variation is associated with size. This is seen clearly in a principal components analysis (Figure 5): 73% of the variation can be summarized along the first principal component and the PC 1 scores are very strongly correlated with log centroid size ($R^2 = 0.92$, $p < 0.001$). Allometric curves show shape change continuing throughout ontogeny and into holaspis (Figure 6). However, the best supported model was the threshold model where a single shift in rate occurs when no more fringe-pits were being added to the cephalon (Table 1). All threshold models are better supported than the linear regression model.

DISCUSSION

Ontogenetic Change in *Cryptolithus tessellatus*

Previous studies describing the ontogeny of *Cryptolithus tessellatus* (Whittington, 1959, 1968; Chatterton et al., 1994) have focused on change in the exoskeleton that occurred in early meraspis. In the first few meraspis stages, there was a rapid increase in the number of fringe-pits. Most notably the number of concentric arcs with a “full complement” of fringe-pits increased from 0 to 3 in early meraspis stages (Figure 7). Length-width plots show that size increased sufficiently between molts to allow identification of early meraspis degrees based on size (“instars”) and that the number of arcs is consistent within each instar (Figure 8). Although Whittington (1959) stated that these size classes do not necessarily correspond to meraspis degrees (i.e., the number of thoracic segments), articulated specimens measured by Chatterton et al. (1994) provide evidence that size classes did correspond with both numbers of arcs and numbers of thoracic segments. Based on comparisons between size clusters and counts of concentric arcs, we believe that Chatterton et al. misstated the number of arcs associated with each meraspis degree: meraspis 0 had no arcs of fringe-pits, meraspis 1 had one arc, meraspis 2 had two arcs, and meraspis 3 and later had three arcs. For example,

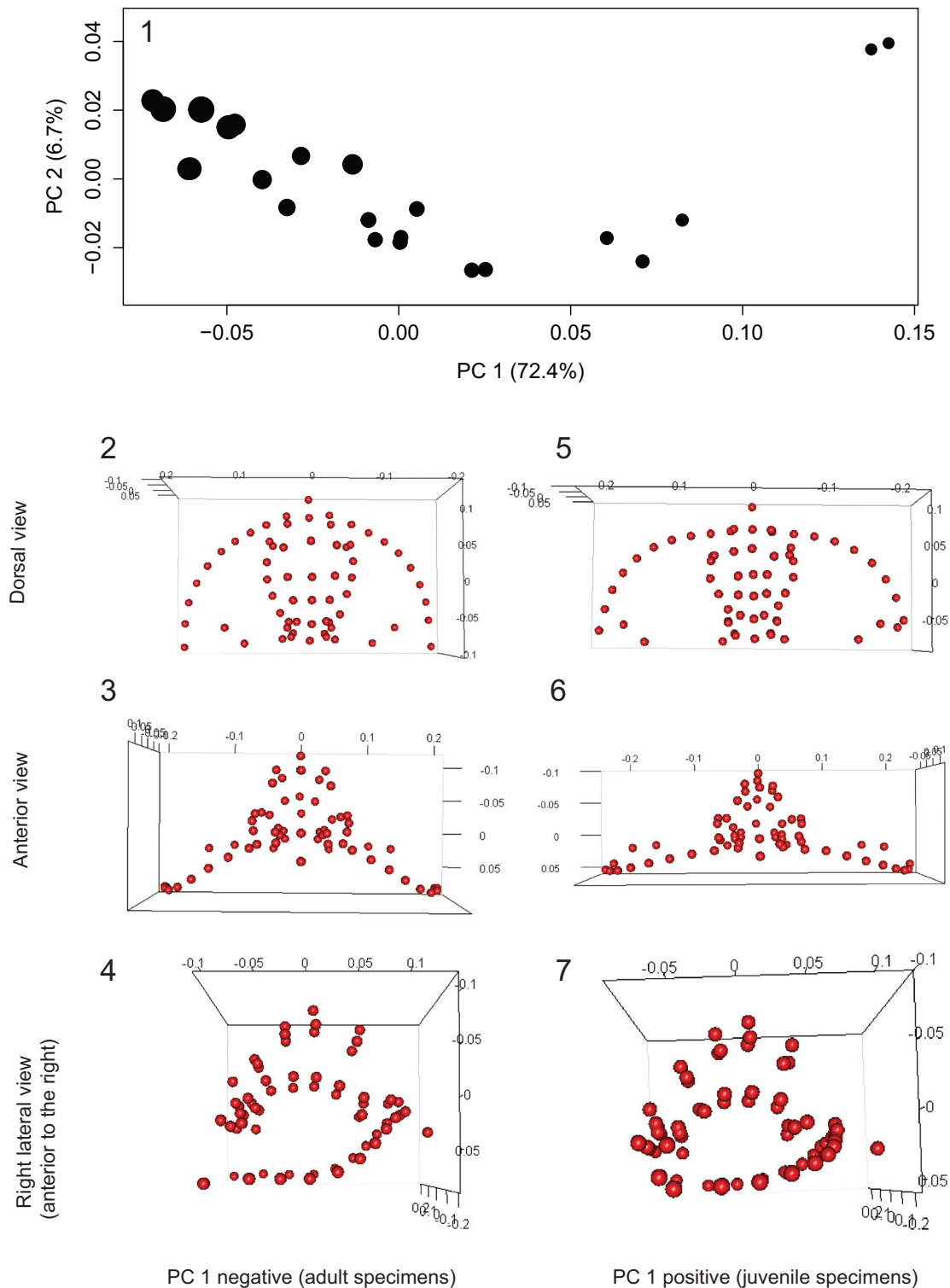


FIGURE 5. Principal components analysis of 3D fixed and semi landmarks. **1**, PC 1 vs PC 2; point size represents relative centroid size of specimen. **2-4**, Landmark configuration of shape represented by low PC 1 score, typical of largest specimens, in dorsal, anterior, and right lateral views, respectively. **5-7**, Landmark configuration of shape represented by high PC 1 score, typical of smallest specimens, in dorsal, anterior, and right lateral views, respectively.

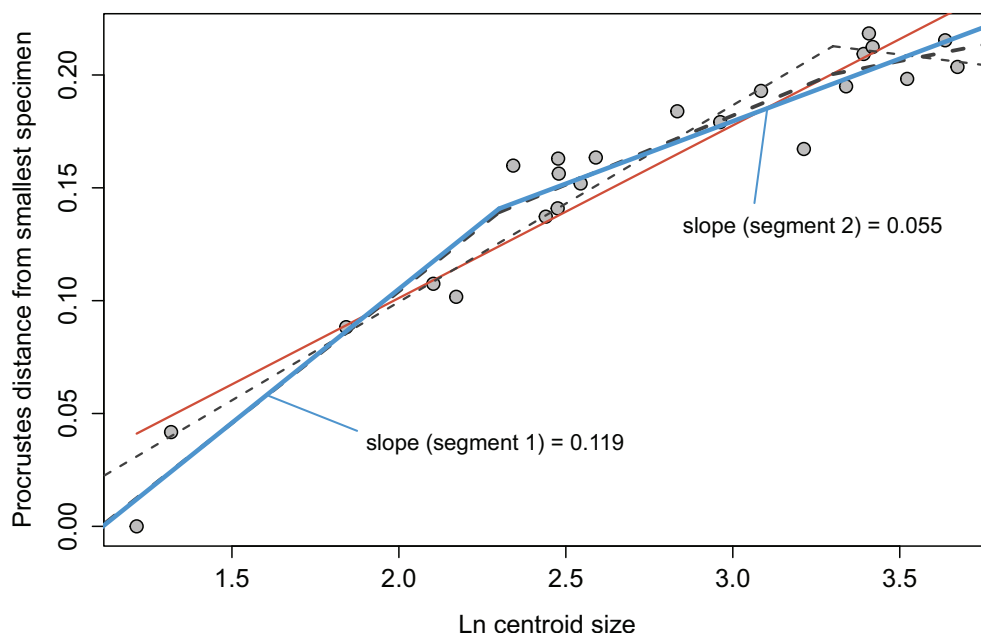


FIGURE 6. Allometric growth in *Cryptolithus tessellatus*. Size (x-axis) is represented by the natural log of centroid size. Change in shape (y-axis) is represented by the Procrustes distance between each specimen and the smallest specimen in the dataset; the Procrustes distances in this case represent the relative amount of change that specimens underwent during development. Red solid line = linear regression model; blue solid line = threshold model 1; thin black dashed line = threshold model 2; thick black dashed line = threshold model 3. Threshold model 1 is the best supported model.

see figure 3.10 of Chatterton et al. (1994), which shows an articulated specimen with one thoracic segment and only one apparent concentric arc of fringe-pits behind the cephalic suture. However, we have been unable to confirm this for other articulated specimens figured by Chatterton et al. (1994) because they are currently missing from the AMNH collections, and we have not found any additional articulated specimens in the remaining residues.

Additional arcs (e.g., I_3) appeared in meraspids of about 0.75 mm in cephalic length (Figures 7-8; Whittington, 1968), but—in contrast to

arcs $E-I_2$ —were first represented by only one or a few fringe-pits at the posterior margin. Over two successive molts, the number of fringe-pits in arc I_3 increased rapidly until the anterior-most was at about the midline of the cephalon and in line with the 10th radial row of fringe-pits in arcs $E-I_2$; specimens as small as 2.5 mm in cephalic length show this (Figures 7-8). The total number of I_3 fringe-pits varied within a short range for all late meraspids and holaspids, even though body size continued to increase four-fold (2 to 8 mm in glabella length) (Figures 7-8; Whittington, 1968, figure 6). Appar-

TABLE 1. Results of model comparison for *Cryptolithus tessellatus*. Numbers in parentheses = set breakpoints for each threshold model; bolded values indicate best supported model. Better support is indicated by lower AICc values. AICc weights indicate the relative likelihood of each model; these are normalized to sum to 1 and may be interpreted as probabilities. See text for additional explanation of different models, and Figures 6 and 9 for plots showing different model fits and slopes for the best supported model.

	3D landmarks		2D landmarks	
	AICc	AICc weights	AICc	AICc weights
linear model	-114.9327	0.0010	-120.283	0.0239
threshold model 1 (early shift)	-128.2149	0.7439	-126.9374	0.6663
threshold model 2 (late shift)	-118.9646	0.0073	-122.6766	0.0792
threshold model 3 (two shifts)	-126.0163	0.2478	-124.815	0.2306

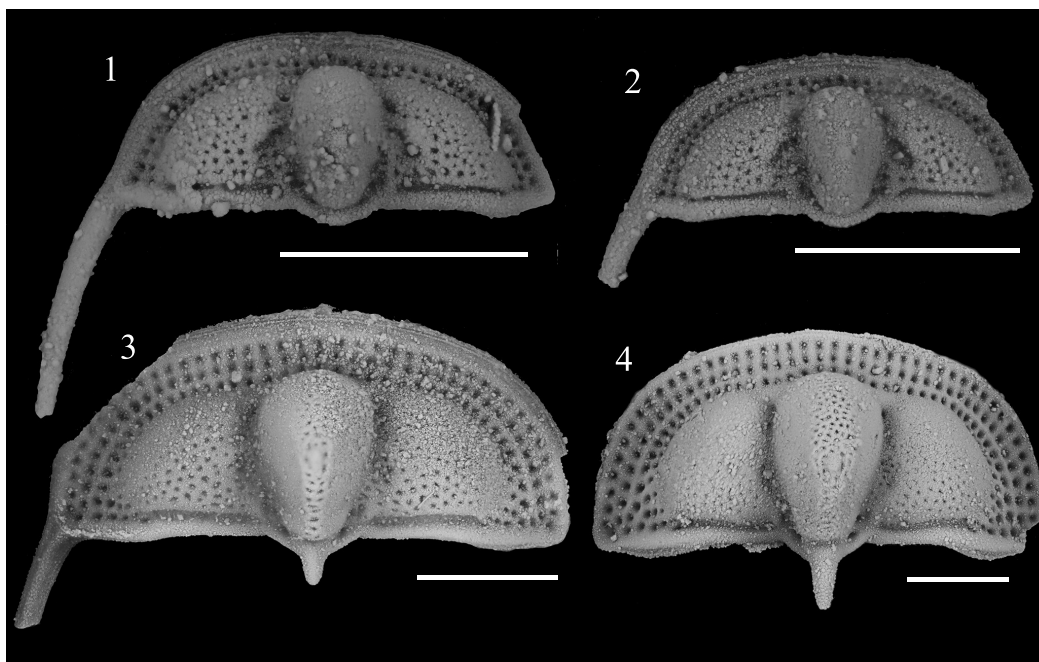


FIGURE 7. Additions of fringe-pits associated with early meraspid stages of ontogeny in *Cryptolithus tessellatus*. **1**, meraspid stage 2 showing two concentric arcs of fringe-pits, AMNH FI-101498, x35. **2**, meraspid stage 2 showing two concentric arcs of fringe-pits, AMNH FI-101499, x35. **3**, meraspid stage 3 showing three concentric arcs of fringe-pits and first few fringe-pits of I3, FI-101496, x20. **4**, later meraspid stage showing complete set of fringe-pits, AMNH FI-101494, x15. Scale bars are 1 mm.

ently this was accommodated by an increase in the side of individual fringe-pits (Whittington, 1968).

Although the number of fringe-pits was essentially stable from early meraspid through holaspid, the shape of the cephalon continued to change during later ontogeny (Figure 6). In particular, the overall convexity in the fringe, and thus the cephalon, increased throughout ontogeny (Figure 5). The chamber created by the fringe had an increasingly greater height in the posterior part of the cephalon and the median arch became more pronounced during growth. Shape change in the glabella was similar to that of the entire cephalon, but generally to a smaller degree. For example, the glabella became longer relative to width during growth, but the increase in the convexity was much smaller. Thus accommodation of organs and muscles under the glabella during growth required increase in size, but less so change in shape. Because both upper and lower lamellae increased in convexity, the change in the convexity of the cephalon resulted in a relative increase in the size of the open “chamber” underneath the ventral size of the organism.

Implications for Paleocology of *Cryptolithus tessellatus*

The change in the convexity of the cephalon has implications for changes in functional morphology during the ontogeny of *Cryptolithus tessellatus*. For example, previous authors have speculated that the fringe served as a filter aiding in capturing suspended food particles (Begg, 1944; Seilacher, 1970; Bergström, 1972; Cisne, 1973; Fortey and Owens, 1999). The proposed orientation of the organism during filter feeding (Fortey and Owens, 1999, text-figure 16) is based on the shape of the cephalic margin, the orientation of the fringe-pits, and comparison with putatively associated trace fossils (Osgood, 1970; Seilacher, 1970; Campbell, 1975). In such a scenario the convexity of the cephalon is critical for defining a chamber in which particles are being sorted out of the suspended sediment. Based on the 3D morphometric analysis, the shape of the cephalon in juveniles would have been much less conducive to this strategy, and there was an expansion through ontogeny of the surface area exposed to currents (oncoming or generated by the organism).

Other hypotheses for the function of the pitted fringe in trinucleids such as *Cryptolithus* include ploughing of sediment (Bergström, 1972), burrow-

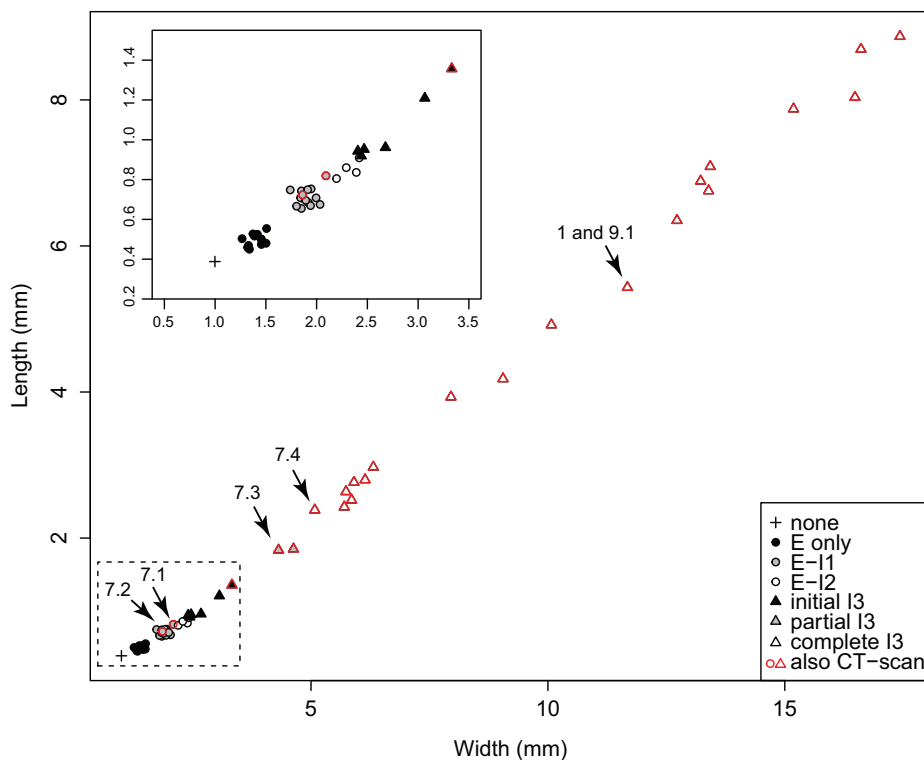


FIGURE 8. Length vs width of *Cryptolothus tessellatus* cephalae, coded for the number of concentric arcs of fringe-pits expressed in each specimen. The first three concentric arcs (E, I₁, and I₂) are complete when first expressed. Based on clustering, I₃ is likely completed over three molts, first by only 1-3 fringe-pits, then 8-10 fringe-pits, then 13-15 fringe-pits with the anteriormost in line with the 10th radial rows of fringe-pits in arcs E-I₂. The dataset includes the 23 specimens, which were CT-scanned as well as 31 additional silicified specimens from the collection; specimens that were CT-scanned are outlined in red. Arrows indicate the specimens shown in Figures 1 and 7. Inset in upper right corner is a magnified view of the specimens in the dashed box. The scaling component describing the relationship between length and width is 1.153 (1 = isometric growth).

ing semi-infaunally (Osgood, 1970); housing the digestive system (Campbell, 1975), housing sensillae or a membrane sensory array (Campbell, 1975), and strengthening of the exoskeleton while keeping it light (Størmer, 1930). We agree with Campbell (1975) that the latter is unlikely, as the presence of the fringe-pits increases the surface area of the exoskeleton, ultimately requiring more biomineralized mass, not less. Nevertheless, CT-scanning of *Cryptolothus* could be used to test this more rigorously by supplying surface models that could be used to assess changes in mass and surface area throughout ontogeny. Surface models of *Cryptolothus* as well as other trinucleids could also be used for assessing the potential for filter feeding, including “size-selective feeding” (Cisne, 1973) in trinucleids throughout ontogeny, and for physical and/or virtual experiments in functionality and stability under various water flow conditions.

Is 3D Morphometrics Necessary for Highly Convex Trilobites?

Although there are clearly features of ontogenetic shape change that would not be captured by 2D morphometrics of *C. tessellatus*, it would be useful to know for interpretation of past and future trilobite studies if the rate of shape change shown in Figure 6 is captured by 2D morphometrics taken from a dorsal view of the cephalon. In order to determine this, we digitized the 18 fixed landmarks visible in dorsal view and semi-landmarks along the first internal list from photographs of the same 23 specimens in dorsal view (Figure 9.1). To the extent possible, the chosen landmarks replicate the landmarks selected from the dorsal surface of the 3D models. However, as mentioned in the Methods section, the landmarks that represent some features are by necessity placed in slightly different positions—most notably landmarks can be chosen from the photographs that represent cavi-

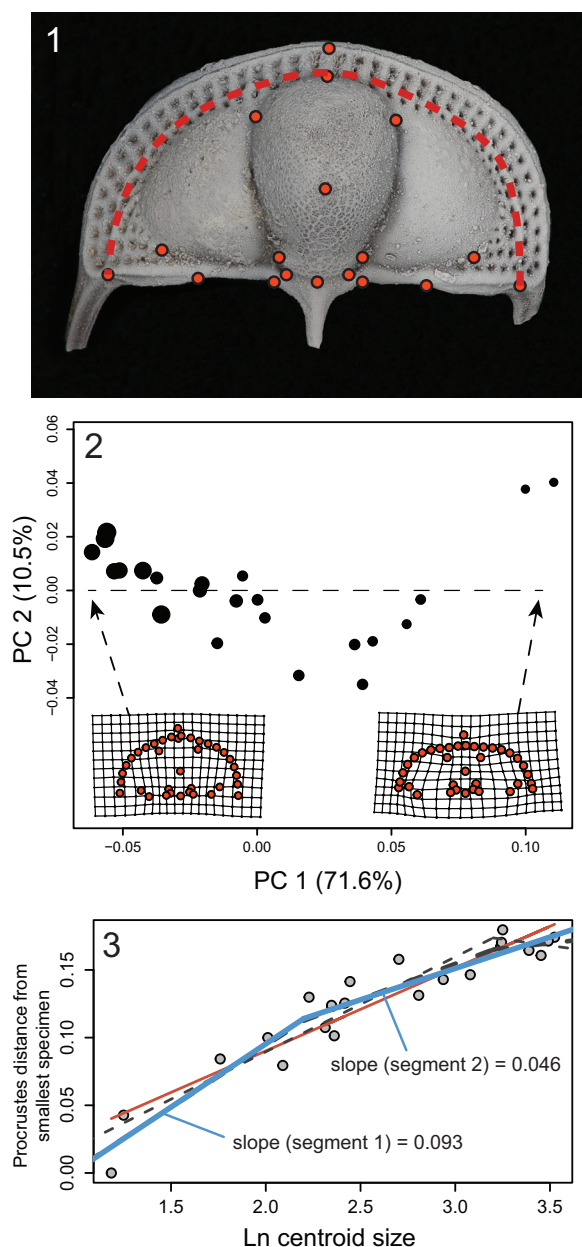


FIGURE 9. Ontogeny of *Cryptolithus tessellatus* based on 2D geometric morphometrics. **1**, Fixed landmarks consistently recognizable in dorsal view. Red dashed line shows curve described by first internal list along which were placed 21 semi-landmarks. Specimen shown is AMNH FI-101479; specimen is 6.7 mm long. **2**, Principal components analysis of 2D fixed- and semi-landmarks. Point size represents relative centroid size of specimen. Insets are deformation plots showing shapes represented by largest and smallest PC 1 values. **3**, Allometric curve; amount of shape change represented by the Procrustes distance between each specimen and the smallest specimen. Red solid line = linear regression model; blue solid line = threshold model 1; thin black dashed line = threshold model 2; thick black dashed line = threshold model 3. Threshold model 1 is the best supported model (Table 1).

ties (the dorsal pits). Thus the landmarks selected from the photographs are an approximate subset of the 3D landmarks. For the model comparison, the natural log of centroid size at the corresponding breakpoints were 2.2 and 3.2.

Results show that, as with the 3D analysis, the first PC axis is dominated by shape change associated with size (Figure 9.2). More importantly, decrease in the rate of ontogenetic shape change estimated from the 2D landmark dataset is approximately the same as that estimated from the 3D landmark dataset: the threshold model with a single early breakpoint is best supported, and at this point, the slope decreases by about half (compare Figure 6 with Figure 9.3). It appears that this is due to the strong correlation of change in the convexity of the cephalon with change in the shape of the cephalon in dorsal view (from semi-elliptical to semi-circular). The correlation between different aspects of shape change means that estimates of rate of shape change are consistent across different morphological datasets. Although we caution that these results may be particular to *C. tessellatus*, this is good news for anyone interested in calculating rates of shape change in other highly convex trilobite species as the collection of 2D landmarks is less time-intensive and less technologically demanding than the collection of 3D landmarks, even by the methods taken in this study.

Comparison of *Cryptolithus tessellatus* with Other Trilobite Species

Although ontogenetic descriptions exist for numerous trilobite species, quantitative assessment of rates of shape change are dominated by comparisons of simple length measurements, with fewer leveraging geometric morphometrics to quantify ontogenetic shape change. We found eight papers in which landmark data was used to describe the shape of the cranidium and allometric curves were constructed by plotting the Procrustes distance (or partial Procrustes distance) from the smallest specimens against centroid size (Kim et al., 2002; Delabroye and Crônier, 2008; Hopkins and Webster, 2009; Park and Choi, 2011b; Hong et al., 2014; Park et al., 2014; Park and Kihm, 2015; Webster, 2015). One of these not only described a different fringed trinucleid, *Marrolithus bureaui*, but also included information about how different stages in the morphological development of the cranidium related to the timing of segment release into the thorax (Delabroye and Crônier, 2008). In *M. bureaui*, the complete number of six concentric arcs was developed by meraspid stage 4, with only

TABLE 2. Results of model comparison for *Marrolithus bureaui* (data from Delabroye and Crônier, 2008). See Table 1 for explanation of AICc values, text for explanation of different models, and Figure 10.1 for plot showing linear model and best supported threshold model. Values in parentheses are the natural log of centroid size for breakpoints in each model.

	AICc	AICc weights
linear model	-356.065	0.0008
threshold model 1 (1.85)	-356.665	0.0010
threshold model 2 (2.5)	-362.037	0.0153
threshold model 3 (2.8)	-369.57	0.6618
threshold model 4 (two shifts)	-368.123	0.3211

TABLE 3. Results of model comparison for seven additional species. See Table 1 for explanation of AICc values, text for explanation of different models, and Figure 10.2-8 for plots showing linear model and best supported threshold model, set breakpoints, and data sources.

	AICc		AICc weights	
	linear model	threshold model	linear model	threshold model
<i>Aulacopleura koninckii</i>	-1678.252	-1678.6962	0.4447	0.5553
<i>Triarthrus becki</i>	-501.786	-598.3558	0.0000	1.0000
<i>Zacanthopsis palmeri</i>	-686.7376	-760.1803	0.0000	1.0000
<i>Haniwa quadrata</i>	-400.8708	-440.5485	0.0000	1.0000
<i>Liostracina tangwangzhaiensis</i>	-234.3299	-239.6435	0.0656	0.9344
<i>Apatokephalus latilimbatus</i>	-398.1783	-396.8969	0.6549	0.3451
<i>Olenellus gilberti</i>	-532.0049	-553.5915	0.0000	1.0000

a few fringe-pits added in later stages (presumably stage 5 just preceding holaspis). In order to compare this species with *C. tessellatus*, we first digitized the ontogenetic curve from this paper using PlotDigitizer (plotdigitizer.sourceforge.net/). We then fitted three threshold models with breakpoints at the size ranges associated with stage 4, stage 5, and the holaspis stage, respectively. We compared these with a threshold model with two breakpoints (stage 4 and holaspis) and a simple linear model using AIC as described above for *C. tessellatus*. Results were unexpected: in *Marrolithus bureaui*, a shift in the rate of shape change at the onset of holaspis was much better supported than any of the models that included a shift at preceding developmental stages associated with the cessation of new fringe-pits (Table 2, Figure 10.1).

For the other studies, it is possible to set a putative breakpoint for a threshold model based on the size range of the latest developmental stage recognized by the authors of the papers. For all but two of these (*Triarthrus becki* and *Aulacopleura koninckii*), it is not known how change in the cranidium relates to the timing of segment release.

Nonetheless ontogenetic shape change is frequently better characterized by a threshold model than a simple linear regression model (Table 3). There are two exceptions: *Apatokephalus latilimbatus* (Figure 10.7), where the linear model is better supported; and *Aulacopleura koninckii*, (Figure 10.2), where both models share similar support. In both cases, the change in rate implied by the threshold model is very small. In the case of *Haniwa quadrata* (Figure 10.5), the slope above the breakpoint is actually negative, but this is likely to be due to low sampling of specimens at the breakpoint itself rather than a true reflection of shape change in this species. In the case of *Olenellus gilberti* (Figure 10.8), data was available from several geometric morphometric analyses that varied in the source locality and taphonomy of the material, the number of developmental stages represented, and the landmarks chosen. Here we applied the model selection to the analysis that comprised the greatest number of developmental stages and set the breakpoint at the size range of specimens unambiguously assigned to the latest developmental stage. However, it is worth noting

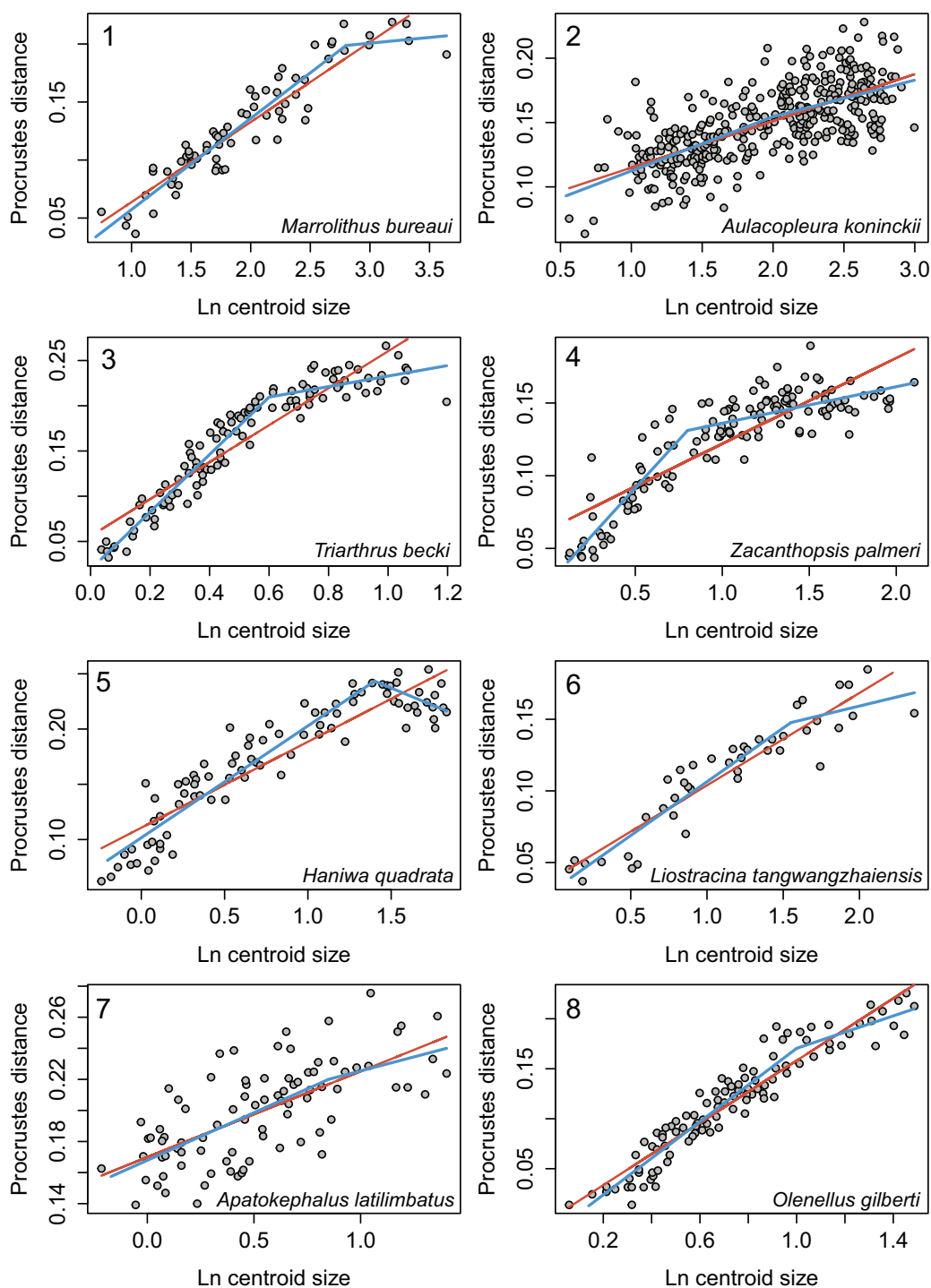


FIGURE 10. Allometry in the crania/cephala of other trilobite species as described by 2D geometric morphometrics. **1,** *Marrolithus bureaui*, data from figure 5 of Delabroye and Cr nier (2008), breakpoint shown is at 2.8, which was the best supported threshold model (Table 2). **2,** *Aulacopleura koninckii*, data from figure 3 of Hong et al. (2014), breakpoint set at 2.0. **3,** *Triarthrus becki*, data from figure 6 of Kim et al. (2002); breakpoint at 0.6. **4,** *Zacanthisopsis palmeri*, data from figure 13 of Hopkins and Webster (2009), breakpoint set at 0.8. **5,** *Haniwa quadrata*, data from figure 5 of Park and Choi (2011b), breakpoint set at 1.4. **6,** *Liostracina tangwangzhaiensis*, data from figure 3 of Park et al. (2014), breakpoint set at 1.55. **7,** *Apatokephalus latilimbatus*, data from figure 4 of Park and Kihm (2015), breakpoint set at 0.85. **8,** *Olenellus gilberti*, data from figure 23B of Webster (2015), breakpoint set at 1.0. Breakpoints are all in units of natural log of centroid size. Red lines = linear regression models; blue lines = threshold models.

that because allometric growth is evident in the latest stage, specimens of this species are not considered “morphologically mature” until they have reached the later part of this stage (Webster, 2015).

Because there is so little quantitative data describing overall shape change in species where segmentation patterns have been established, it is difficult to predict the relative frequencies of different modes of ontogeny. However, a few conclusions may be drawn from this study. First, trilobite ontogenetic trajectories which include putative holaspids may often be better characterized by threshold models than the simple linear regression models sometimes applied. Second, the expectation that shifts in the rate of shape change associated with “morphological maturity” are also associated with the cessation of thoracic segment release is belied by the example of *Cryptolithus tessellatus*. Shifts in the rate of shape change may in fact be associated with other major morphological developments at different ontogenetic stages. However, and finally, the difference between *C. tessellatus* and *M. bureau* in this respect suggests that the timing of such shifts may not be phylogenetically conserved.

ACKNOWLEDGMENTS

Thank you to M. Hill and H. Towbin in the AMNH Microscopy and Imaging Facility for scanning the specimens and providing help with post-processing, to W. Harcourt-Smith for help with Landmark Editor, to G. Edgecombe for discussion about the provenance of the specimens and *Cryptolithus* ontogeny, to A. Bush for editorial support, and to K. Parsons-Hubbard and two anonymous reviewers for suggestions that improved the manuscript.

REFERENCES

- Adams, D.C. and Otarola-Castillo, E. 2013. geomorph: An R package for the collection and analysis of geometric morphometric shape data. *Methods in Ecology and Evolution*, 4:393-399.
- Begg, J.L. 1944. On the fringe of *Tretaspis*. *Geological Magazine*, 81:113-117.
- Bergström, J. 1972. Appendage morphology of the trilobite *Cryptolithus* and its implications. *Lethaia*, 5:85-94.
- Burnham, K.P. and Anderson, D.R. 2002. *Model Selection and Multimodel Inference*, second edition. Springer-Verlag, Inc., New York.
- Campbell, K.S.W. 1975. The functional morphology of *Cryptolithus*. *Fossils and Strata*, 4:65-86.
- Chatterton, B.D.E., Edgecombe, G.D., Speyer, S.E., Hunt, A.S., and Fortey, R.A. 1994. Ontogeny and relationships of Trinucleoidea (Trilobita). *Journal of Paleontology*, 68:523-540.
- Chatterton, B.D.E., Siveter, D.J., Edgecombe, G.D., and Hunt, A.S. 1990. Larvae and relationships of the Calymenina (Trilobita). *Journal of Paleontology*, 64:255-277.
- Cisne, J.L. 1973. Beecher's trilobite bed revisited: ecology of an Ordovician deepwater fauna. *Postilla, Peabody Museum of Natural History, Yale University*, 160:1-25.
- Claude, J. 2008. *Morphometrics with R*. Springer-Verlag, Inc., New York.
- Delabroye, A. and Crônier, C. 2008. Ontogeny of an Ordovician trinucleid (Trilobita) from Armorica, France: a morphometric approach. *Journal of Paleontology*, 82:800-810.
- Edgecombe, G.D. 1992. Trilobite phylogeny and the Cambrian-Ordovician "event": cladistic reappraisal, p. 144-177. In Novacek, M.J. and Wheeler, Q.D. (eds.), *Extinction and Phylogeny*. Columbia University Press, New York.
- Fortey, R.A. and Chatterton, B.D.E. 1988. Classification of the trilobite suborder Asaphina. *Palaeontology*, 31:165-222.
- Fortey, R.A. and Owens, R.M. 1999. Feeding habits in trilobites. *Palaeontology*, 42:429-465.
- Fusco, G., Hughes, N.C., Webster, M., and Minelli, A. 2004. Exploring developmental modes in a fossil arthropod: growth and trunk segmentation of the trilobite *Aulacopleura konincki*. *American Naturalist*, 163:167-183.
- Gerber, S. and Hopkins, M.J. 2011. Mosaic heterochrony and evolutionary modularity: the trilobite genus *Zacanthopsis* as a case study. *Evolution*, 65:3241-3252.
- Green, J. 1832. *A Monograph of the Trilobites of North America: with Colored Models of the Species*. Clark & Raser, Printers, Philadelphia.
- Gunz, P., Mitteroecker, P., Neubauer, S., Weber, G.W., and Bookstein, F.L. 2009. Principles for the virtual reconstruction of hominin crania. *Journal of Human Evolution*, 57:48-62.
- Hong, P.S., Hughes, N.C., and Sheets, H.D. 2014. Size, shape, and systematics of the Silurian trilobite *Aulacopleura koninckii*. *Journal of Paleontology*, 88:1120-1138.
- Hopkins, M.J. and Webster, M. 2009. Ontogeny and geographic variation of a new species of the corynexochine trilobite *Zacanthopsis* (Dyeran, Cambrian). *Journal of Paleontology*, 83:524-547.
- Hughes, C.P., Ingham, J.K., and Addison, R. 1975. The morphology, classification and evolution of the Trinucleidae (Trilobita). *Philosophical Transactions of the Royal Society of London B: Biological Sciences*, 272:537-604.
- Kim, K., Sheets, H.D., Haney, R.A., and Mitchell, C.E. 2002. Morphometric analysis of ontogeny and allometry.

- etry of the Middle Ordovician trilobite *Triarthrus becki*. *Paleobiology*, 28:364-377.
- Osgood, R.G. 1970. Trace fossils of the Cincinnati area. *Palaeontographica Americana*, 6:281-444.
- Park, T.-Y. and Choi, D.K. 2011a. Constraints on using ontogenetic data for trilobite phylogeny. *Lethaia*, 44:250-254.
- Park, T.-Y. and Choi, D.K. 2011b. Ontogeny of the Furongian (late Cambrian) remopleuridoid trilobite *Haniwa quadrata* Kobayashi, 1933, from Korea: implications for trilobite taxonomy. *Geological Magazine*, 148:288-303.
- Park, T.-Y.S. and Kihm, J.-H. 2015. Post-embryonic development of the Early Ordovician (ca. 480 Ma) trilobite *Apatokephalus latilimbatus* Peng, 1990 and the evolution of metamorphosis. *Evolution and Development*, 17:289-301.
- Park, T.-Y.S., Kihm, J.-H., Kang, I., and Choi, D.K. 2014. Ontogeny of a new species of the Cambrian Series 3 (Middle Cambrian) trilobite genus *Liostracina* Monke, 1903 from North China and the taxonomic position of the superfamily Trinucleoidea. *Journal of Paleontology*, 88:395-402.
- R Development Core Team. 2015. R: a language and environment for statistical computing. R Foundation for Statistical Computing, Vienna, Austria. <https://www.r-project.org/>
- Seilacher, A. 1970. *Cruziana* stratigraphy of "non-fossiliferous" Palaeozoic sandstones, p. 447-476. In Crimes, T.P. and Harper, J.C. (eds.), *Trace Fossils*. Geological Journal Special Issue 3, Seel House Press, Liverpool.
- Størmer, L. 1930. Scandinavian Trinucleidae with special reference to Norwegian species and varieties. *Norsk Videnskaps-Akademi i Oslo. Skrifter I. Matematisk-Naturvidenskapelig Klasse*, 5:1-111.
- Webster, M. 2015. Ontogeny and intraspecific variation of the early Cambrian trilobite *Olenellus gilberti*, with implications for olenelline phylogeny and macroevolutionary trends in phenotypic canalization. *Journal of Systematic Palaeontology*, 13:1-74.
- Whittington, H.B. 1941. The Trinucleidae: with special reference to North American genera and species. *Journal of Paleontology*, 15:21-41.
- Whittington, H.B. 1959. Silicified Middle Ordovician trilobites: Remopleuridae, Trinucleidae, Raphiophoridae, Endymioniidae. *Bulletin of the Museum of Comparative Zoology*, 121(8):369-496.
- Whittington, H.B. 1968. *Cryptolithus* (Trilobita): Specific characters and occurrences in Ordovician of Eastern North America. *Journal of Paleontology*, 42:702-714.
- Wiley, D.F., Amenta, N., Alcantara, D.A., Ghosh, D., Kil, Y.J., Delson, E., Harcourt-Smith, W., Rohlf, F.J., St. John, K., Hamann, B., Motani, R., Frost, S., Rosenberger, A.L., Tallman, L., Disotell, T., and O'Neill, R. 2007. Landmark Editor ver. 3.6: Institute for Data Analysis and Visualization (IDAV) and the University of California, Davis. www.idav.ucdavis.edu/research/EvoMorph

APPENDIX 1

Studies of trilobites using geometric morphometrics

- Abe, F.R. and Lieberman, B.S. 2012. Quantifying morphological change during an evolutionary radiation of Devonian trilobites. *Paleobiology*, 38:292-307.
- Adrain, J.M. 2005. Aulacopleurid trilobites from the Upper Ordovician of Virginia. *Journal of Paleontology*, 79:542-563.
- Adrain, J.M. and Westrop, S.R. 2006. New earliest Ordovician trilobite genus *Millardicurus*: the oldest known hystricurid. *Journal of Paleontology*, 80:650-671.
- Bignon, A. and Crônier, C. 2012. Evolutionary modifications of ontogeny of three *Dechenella* species (Proetidae), from the Middle Devonian of the Ardenne Massif (France). *Journal of Paleontology*, 86:558-566.
- Crônier, C. and Fortey, R. 2006. Morphology and ontogeny of an Early Devonian phacopid trilobite with reduced sight from southern Thailand. *Journal of Paleontology*, 80:529-536.
- Crônier, C., Auffray, J.C., and Courville, P. 2005. A quantitative comparison of the ontogeny of two closely - related Upper Devonian phacopid trilobites. *Lethaia*, 38:123-135.
- Cronier, C., Feist, R., and Auffray, J.C. 2004. Variation in the eye of *Acuticryphops* (Phacopina, Trilobita) and its evolutionary significance: a biometric and morphometric approach. *Paleobiology*, 30:471-481.
- Delabroye, A. and Crônier, C. 2008. Ontogeny of an Ordovician trinucleid (Trilobita) from Armorica, France: a morphometric approach. *Journal of Paleontology*, 82:800-810.
- Fusco, G., Hughes, N.C., Webster, M., and Minelli, A., 2004, Exploring developmental modes in a fossil arthropod: growth and trunk segmentation of the trilobite *Aulacopleura konincki* *American Naturalist*, 163:167-183.
- Gendry, D., Courville, P., Saucède, T., Laffont, R., and Paris, F. 2013. Contribution of morphometrics to the systematics of the Ordovician genus *Neseuretus* (Calymenidae, Trilobita) from the Armorican Massif, France. *Journal of Paleontology*, 87:456-471.
- Gerber, S. and Hopkins, M.J. 2011. Mosaic heterochrony and evolutionary modularity: the trilobite genus *Zacanthopsis* as a case study. *Evolution*, 65:3241-3252.
- Hong, P.S., Hughes, N.C., and Sheets, H.D. 2014. Size, shape, and systematics of the Silurian trilobite *Aulacopleura koninckii*. *Journal of Paleontology*, 88:1120-1138.
- Hopkins, M.J. 2011. How species longevity, intraspecific morphological variation, and geographic range size are related: a comparison using Late Cambrian trilobites. *Evolution*, 65:3252-3273.
- Hopkins, M.J. 2013. Decoupling of taxonomic diversity and morphological disparity during decline of the Cambrian trilobite family Pterocephaliidae. *Journal of Evolutionary Biology*, 26:1665-1676.
- Hopkins, M.J. and Webster, M. 2009. Ontogeny and geographic variation of a new species of the corynexochine trilobite *Zacanthopsis* (Dyeran, Cambrian). *Journal of Paleontology*, 83:524-547.
- Hughes, N.C. and Chapman, R.E. 1995. Growth and variation in the Silurian proetide trilobite *Aulacopleura konincki* and its implications for trilobite palaeobiology. *Lethaia*, 28:333-353.
- Hughes, N.C. and Chapman, R.E. 2001. Morphometry and phylogeny in the resolution of paleobiological problems—unlocking the evolutionary significance of an assemblage of Silurian trilobites, p. 29-54. In Adrain, J.M., Edgecombe, G.D., and Lieberman, B.S. (eds.), *Fossils, Phylogeny, and Form*. Springer.
- Hunda, B.R. and Hughes, N.C. 2007. Evaluating paedomorphic heterochrony in trilobites: the case of the diminutive trilobite *Flexicalymene retrosa minuens* from the Cincinnati series (Upper Ordovician), Cincinnati region. *Evolution and Development*, 9:483-498.
- Kim, K., Sheets, H.D., Haney, R.A., and Mitchell, C.E. 2002. Morphometric analysis of ontogeny and allometry of the Middle Ordovician trilobite *Triarthrus becki*. *Paleobiology*, 28:364-377.
- Kim, K., Sheets, H.D., and Mitchell, C.E. 2009. Geographic and stratigraphic change in the morphology of *Triarthrus beckii* (Green) (Trilobita): a test of the *Plus ça change* model of evolution. *Lethaia*, 42:108-125.
- MacLeod, N. 2002. Phylogenetic signals in morphometric data, p. 100-138. In MacLeod, N. and Forey, P.L. (eds.), *Morphology, Shape and Phylogeny*. CRC Press.
- McCormick, T. and Fortey, R.A. 1999. The most widely distributed trilobite species: Ordovician *Carolinites genacinaca*. *Journal of Paleontology*, 73:202-218.
- McCormick, T. and Fortey, R.A. 2002. The Ordovician trilobite *Carolinites*, a test case for microevolution in a macrofossil lineage. *Palaeontology*, 45:229-257.
- Park, T.-Y. and Choi, D.K. 2011. Ontogeny of the Furongian (late Cambrian) remopleuridioid trilobite *Haniwa quadrata* Kobayashi, 1933, from Korea: implications for trilobite taxonomy. *Geological Magazine*, 148:288-303.
- Park, T.-Y.S. and Kihm, J.-H. 2015. Post-embryonic development of the Early Ordovician (ca. 480 Ma) trilobite *Apatokephalus latilimbatus* Peng, 1990 and the evolution of metamorphosis. *Evolution & Development*, 17:289-301.
- Park, T.-Y.S., Kihm, J.-H., Kang, I., and Choi, D.K. 2014. Ontogeny of a new species of the Cambrian Series 3 (Middle Cambrian) trilobite genus *Liostracina* Monke, 1903 from North China and the taxonomic position of the superfamily Trinucleoidea. *Journal of Paleontology*, 88:395-402.

- Sheets, H.D., Kim, K., and Mitchell, C.E. 2004. A combined landmark and outline-based approach to ontogenetic shape change in the Ordovician trilobite *Triarthrus becki*, p. 67-82. In Elewa, A.M.T. (ed.), *Morphometrics: Applications in Biology and Paleontology*. Springer, Berlin.
- Simpson, A.G., Hughes, N.C., Kopaska-Merkel, D.C., and Ludvigsen, R. 2005. Development of the caudal exoskeleton of the pliomerid trilobite *Hintzeia plicamarginis* new species. *Evolution & Development*, 7:528-541.
- Smith, L.H. 1998. Asymmetry of Early Paleozoic trilobites. *Lethaia*, 31:99-112.
- Smith, L.H. 1998. Species level phenotypic variation in lower Paleozoic trilobites. *Paleobiology*, 24:17-36.
- Smith, L.H. and Lieberman, B.S. 1999. Disparity and constraint in olenelloid trilobites and the Cambrian radiation. *Paleobiology*, 25:459-470.
- Webber, A.J. and Hunda, B.R. 2007. Quantitatively comparing morphological trends to environment in the fossil record (Cincinnatian Series, Upper Ordovician). *Evolution*, 61:1455-1465.
- Webster, M. 2015. Ontogeny and intraspecific variation of the early Cambrian trilobite *Olenellus gilberti*, with implications for olenelline phylogeny and macroevolutionary trends in phenotypic canalization. *Journal of Systematic Palaeontology*, 13:1-74.
- Webster, M. and Hughes, N.C. 1999. Compaction-related deformation in Cambrian olenelloid trilobites and its implications for fossil morphometry. *Journal of Paleontology*, 73:355-371.
- Webster, M. and Zelditch, M.L. 2005. Evolutionary modifications of ontogeny: heterochrony and beyond. *Paleobiology*, 31:354-372.
- Webster, M. and Zelditch, M.L. 2011. Evolutionary lability of integration in Cambrian ptychoparioid trilobites. *Evolutionary Biology*, 38:144-162.
- Webster, M. and Zelditch, M.L. 2011. Modularity of a Cambrian ptychoparioid trilobite cranium. *Evolution and Development*, 13:96-109.

APPENDIX 2

Description of 3D landmarks taken from each *Cryptolithus tessellatus* cephalon. All of the following orientations describe a specimen with the anterior margin facing upwards unless otherwise specified.

- | | | | |
|-----|---|--------|--|
| 1. | Anterior pit at edge tangent to axial furrow, right side | 13. | Node at junction between occipital lobe and posterior margin, right side |
| 2. | Anterior pit at edge tangent to axial furrow, left side | 14. | Node at junction between occipital lobe and posterior margin, left side |
| 3. | Anterior apodome at edge tangent t to axial furrow, right side | 15. | Fulcrum on posterior border, right side |
| 4. | Anterior apodome at edge tangent t to axial furrow, left side | 16. | Fulcrum on posterior border, left side |
| 5. | Posterior (occipital) apodome at edge tangent t to axial furrow, right side | 17. | Median glabellar tubercle |
| 6. | Posterior (occipital) apodome at edge tangent t to axial furrow, left side | 18. | Intersection of preglabellar furrow with sagittal axis |
| 7. | Apex of anterior pit (left side in ventral view) | 19. | Intersection of suture between upper and lower lamellae and sagittal axis |
| 8. | Apex of anterior pit (right side in ventral view) | 20. | Intersection of occipital furrow with sagittal axis |
| 9. | Apex of anterior apodome (left side in ventral view) | 21. | Lateral-most extent of furrow along posterior margin of genal lobe, right side. Usually just above interior-most F-pit. |
| 10. | Apex of anterior apodome (right side in ventral view) | 22. | Lateral-most extent of furrow along posterior margin of genal lobe, left side |
| 11. | Apex of posterior (occipital) apodome (left side in ventral view) | 23. | Anchor point for semi-landmarks along first internal list, placed where list intersects with posterior margin, left side |
| 12. | Apex of posterior (occipital) apodome (right side in ventral view) | 24-41. | Semi-landmarks along first internal list |
| | | 42. | Anchor point for semi-landmarks along first internal list, placed where list intersects with posterior margin, right side. |

APPENDIX 3.

Three-dimensional landmark data used in this study in TPS format. Fixed landmarks: 1–23, 42. Semi-landmarks along a curve: 24–41, numbered from left to right. Surface semi-landmarks: 43–67. Landmarks 1, 2, 17, and 18 are redundant with landmarks 63, 67, 55, and 65, respectively. See text and Appendix 2 for more details. Replicates are designated as “A” and “B”.

```

LM3=67
-5.1920424 -0.23478423 0.12264872 -1.7860899 -5.353775 1.0702829
-3.6132264 2.9864447 0.393857 -2.3298059 -0.68524367 -1.1713504
-1.4178665 -0.65186995 -0.85222054 -1.9605888 -0.19018944 -1.9518317
-0.60509849 1.1277573 -0.85444069 -1.6381967 0.37640384 -2.1520815
-0.92131507 -0.66756308 -0.94253635 -1.3781742 0.96860939 -1.7876307
-0.28435254 0.77989221 -0.89058304 -1.1322176 1.6818721 -0.99377412
-4.5113354 -0.17510328 0.66872311 -3.1031904 -0.72645241 -1.0778664
-3.2767305 2.8356934 0.64237833 -3.1561937 0.13663787 -2.5594835
-1.4708078 -0.46042755 -0.49606323 -2.9987659 0.81083286 -2.8325515
-0.91546488 1.0855376 -0.61286926 -2.5220847 1.5354023 -2.5587897
-0.87478781 -0.47033778 -0.53184891 -1.7727647 2.197264 -1.0181013
-0.45114613 0.70924824 -0.47343636 -3.8555527 -0.75663584 -0.91513813
-0.79302216 -1.0389851 -0.095524788 -4.1253805 0.3987965 -2.4338803
0.075470924 0.98872513 -0.14026237 -4.0214453 1.2867664 -3.1234124
-1.3333054 -2.744446 -0.24188828 -3.4210126 2.054491 -2.5476317
1.0350389 2.7668757 -0.31393111 -2.3726625 2.6237359 -0.82041031
-4.0214453 1.2867664 -3.1234131 -4.5691452 -0.60523486 -0.51770151
-5.4330888 1.6784619 0.61616325 -4.9832449 0.58075327 -1.5380106
-5.8984246 1.8629988 1.6598477 -4.8797054 1.5671358 -1.8731115
-0.70962286 0.026065068 -1.5657024 -4.2303739 2.4559488 -1.5318037
-2.5113816 -3.5625019 0.025503159 -2.9873705 2.9067223 -0.35409841
0.86495495 4.003293 0.17371178 -5.1920424 -0.2347838 0.12264872
2.4583812 4.8065667 0.89885521 -5.66961 0.78191388 0.46940696
1.3989635 5.2133636 1.1547546 -5.4330883 1.6784618 0.61616325
0.53818846 5.3690634 1.4586678 -4.8115067 2.4438846 0.59046018
-0.24123883 5.3380075 1.6758366 -3.6132264 2.9864445 0.39385706
-1.1659667 5.1526246 1.7871933 ID=AMNH-FI_101474_A
-1.8982748 4.8895044 1.7026768 LM3=67
-2.5616984 4.4839926 1.5016232 -5.2605095 -0.18701893 0.16342402
-3.1545122 4.0543184 1.2792721 -3.7598057 2.9600761 0.29442382
-3.7946546 3.5256219 0.99193001 -1.4024091 -0.49461758 -0.60100126
-4.4878082 2.9456568 0.89860916 -0.65399849 1.1698068 -0.74067354
-5.7405291 0.45339745 0.83244133 -0.9050312 -0.48277852 -0.59535551
-5.6506996 -0.50490201 0.97798061 -0.31618154 0.89941508 -0.77651072
-5.5157733 -1.3371 1.2404718 -4.5354004 -0.19396861 0.67842007
-5.3051777 -2.1515374 1.5279398 -3.360476 2.8055956 0.58791447
-4.9984403 -2.9118142 1.7137423 -1.4578637 -0.50584191 -0.48976421
-4.4955945 -3.7169762 1.8342047 -0.82694304 1.0811219 -0.51430893
-4.0319877 -4.2181787 1.7507048 -0.93886197 -0.55585319 -0.49730682
-3.3531232 -4.7506251 1.478919 -0.41894305 0.74954325 -0.4598999
-2.7437425 -5.0122623 1.2771406 -0.72913837 -1.0515443 -0.18553692

```

HOPKINS & PEARSON: 3D MORPHOMETRICS IN TRILOBITES

0.10935688	0.98094881	-0.1715647	-4.2703395	2.3947909	-1.6318634
-1.3665991	-2.9469318	-0.28266323	-2.8637774	2.8697648	-0.4961814
1.0927305	2.8199406	-0.3374064	-5.2605095	-0.18701902	0.163424
-4.0734415	1.2980151	-3.1258421	-5.670495	0.77779394	0.46771532
-5.4648457	1.6255337	0.5737958	-5.4648452	1.6255335	0.57379568
-5.8627224	1.9188788	2.0018103	-4.8809314	2.3954644	0.5294956
-0.78369224	0.088764384	-1.6005201	-3.7598057	2.9600761	0.29442382
-2.4515495	-3.3969426	-0.038039207	ID=AMNH-FI_101474_B		
0.51043606	3.7052217	-0.17383957			
2.4534049	4.8185091	0.93381119	LM3=67		
1.5682282	5.201457	1.1586103	-0.76492262	2.9331787	2.9109116
0.73553705	5.36551	1.4173336	-0.12579918	-1.893164	3.3572464
-0.15726709	5.3621368	1.6766338	2.5061302	2.0929313	-1.1817803
-1.0224555	5.2126045	1.818119	2.7301016	-0.73950028	-1.0223653
-1.9033446	4.8978386	1.7242451	2.5639715	1.7584913	-1.7202858
-2.7686396	4.372726	1.5012255	2.8398161	-0.48659116	-1.5730066
-3.4613743	3.8140171	1.1815529	-0.91495752	2.5255353	2.6458139
-4.2600079	3.1814091	0.93692207	-0.38026905	-1.5450195	2.9773607
-4.9772568	2.4807451	0.8850975	1.8994002	1.8924447	-1.0406485
-5.7267132	0.95204669	0.77838135	2.1524916	-0.74323595	-0.76998329
-5.7123108	-0.052670341	0.88873863	2.0554938	1.4852207	-1.7080307
-5.5888796	-0.95159137	1.1132565	2.3017893	-0.40969113	-1.5410423
-5.3999224	-1.8181471	1.4178524	1.60359	2.0977805	-2.3182402
-5.0978193	-2.7805598	1.7266045	2.0632086	-1.1521493	-2.0378199
-4.5959272	-3.5823607	1.8177319	1.5101686	4.5243073	-2.5904202
-3.9999228	-4.2484303	1.7353735	2.6036425	-3.4915731	-1.9018717
-3.3789959	-4.735538	1.4745636	4.1234856	1.3484706	3.570087
-2.6531906	-5.0442495	1.2244997	-1.380857	0.25160187	4.309761
-1.7394266	-5.3164163	1.0005112	-3.0587649	-0.11818711	4.6733761
-2.0517972	-0.59441167	-1.3454219	3.6933832	0.80159432	-1.3280854
-1.6705354	-0.20572865	-1.8759818	0.98734474	5.6457815	-2.2815239
-1.3986412	0.26801232	-2.042109	2.2836361	-4.6955738	-1.3873918
-1.2439778	0.89463246	-1.7658689	0.98527527	-7.4727674	-2.9843044
-1.1989725	1.6518005	-1.0830224	0.33111572	-7.4900413	-1.6204157
-3.0177796	-0.66579312	-1.2359136	-0.39124489	-7.36129	-0.60801029
-3.1066389	0.21968114	-2.5732901	-1.0111179	-6.9163103	0.37563515
-2.9168804	0.9577201	-2.8241107	-1.3880959	-6.22473	1.3236494
-2.4168274	1.5129688	-2.5087876	-1.4734631	-5.3462119	2.1239643
-1.6297687	2.0403824	-1.0465237	-1.4375744	-4.3832426	2.7918248
-3.8718274	-0.68680125	-0.98371428	-1.481575	-3.2895567	3.4342618
-4.2120447	0.4886761	-2.4584825	-1.4392147	-2.1311848	3.8654399
-4.0734415	1.2980151	-3.1258419	-1.4915314	-0.90597498	4.3092523
-3.3761127	2.0021574	-2.6067038	-1.8735733	1.537998	4.2067204
-2.1403861	2.4741478	-0.90948695	-1.9701347	2.9456809	3.5453577
-4.6304941	-0.54418898	-0.52220505	-2.2174473	4.1006179	2.7279968
-5.0106764	0.66353261	-1.4784837	-2.6204491	5.1528645	1.9254341
-4.9007201	1.5385206	-1.8416137	-2.819252	5.9874287	1.0933094

-2.8902445 6.8539257 -0.055217743 1.7106879 4.7154412 -2.6912241
 -2.6003323 7.3918357 -1.0483999 2.6989057 -3.7745285 -1.96488
 -2.0030031 7.7118578 -2.0252709 4.1191711 1.3164784 3.5831285
 -1.2967129 7.8330355 -3.128921 -1.4111145 0.43133414 4.3077612
 -0.44884014 7.6655211 -4.3339462 -3.2536907 0.17823836 4.6182833
 2.5020704 2.6780672 -0.047467139 3.6936245 0.77260524 -1.3445046
 3.6267622 1.8900162 -0.040711876 0.83795166 5.9168296 -2.3644009
 4.0511169 0.99230868 0.0055875867 2.300025 -4.7023621 -1.3410506
 3.8688693 -0.010099884 0.070657 0.94366455 -7.4953861 -2.9972506
 2.8880615 -1.082194 0.18335278 0.31597424 -7.4620075 -1.5570192
 2.1955857 3.2302897 1.0009922 -0.47269154 -7.2324629 -0.38628387
 3.9391098 2.2837281 1.8062276 -1.054512 -6.7661543 0.56251812
 4.4617705 1.2781625 2.069325 -1.4003563 -5.958312 1.5653248
 4.2026029 0.020102561 1.987891 -1.4892511 -5.1300397 2.285471
 2.5209076 -1.6689939 1.3788135 -1.4482584 -4.1346183 2.9508123
 1.5484295 3.4530516 1.8452077 -1.4241943 -3.0781708 3.4974041
 3.4537659 2.5557175 3.0867798 -1.4120684 -1.9612095 3.9434009
 4.1234856 1.3484704 3.5700872 -1.6273556 -0.8206982 4.3314195
 3.6127543 -0.14658999 3.3289881 -1.8913908 1.7436035 4.0891294
 1.8288668 -1.9088374 2.3035479 -2.0001297 2.9946256 3.5026102
 0.56209278 3.2259593 2.4645934 -2.3134365 4.1207762 2.7347145
 1.7715135 2.4695332 3.9990993 -2.6089125 5.1674643 1.9147482
 2.3163424 1.0597608 4.6846952 -2.851696 6.0589776 0.99853706
 1.9902947 -0.5534361 4.2620978 -2.8211784 6.8214493 -0.0006313324
 0.96305978 -2.0041251 2.9628184 -2.5520449 7.4110088 -1.096344
 -0.76492256 2.9331789 2.9109118 -1.9034109 7.7489667 -2.3007679
 -1.2871221 1.6047857 4.0505643 -1.2196503 7.8196354 -3.2008724
 -1.380857 0.25160185 4.3097601 -0.6038723 7.7248592 -4.4065437
 -0.98774666 -0.89345646 4.1386313 2.4837358 2.791075 0.13800897
 -0.12579918 -1.893164 3.3572464 3.6521268 1.8835901 0.01714964
 ID=AMNH-FI_101477_A 4.06604 0.89019525 0.015100451
 3.7866461 -0.14898176 0.11213657
 LM3=67 2.7984152 -1.2486414 0.31365207
 -0.72397971 2.918478 2.9515741 2.0784626 3.300235 1.0709636
 -0.23605442 -1.8667364 3.3774142 3.9443126 2.2751184 1.8003634
 2.3694758 2.0813661 -1.1509838 4.4681396 1.2241675 2.0531249
 2.6241207 -0.75949138 -1.0380975 4.2545848 -0.051497951 2.0622692
 2.5494003 1.7315971 -1.7001907 2.5363321 -1.627581 1.5681175
 2.8426394 -0.47629595 -1.5627893 1.4097546 3.4356411 1.8643589
 -0.96718121 2.6052358 2.6345239 3.3358848 2.4497259 3.0319145
 -0.46779442 -1.5642663 3.0820804 4.1191707 1.3164784 3.5831285
 1.8877692 1.8947623 -1.0005001 3.6093383 -0.11546924 3.3690615
 2.2721934 -0.77912074 -0.73414755 1.9280033 -1.8340399 2.497437
 1.9768424 1.6778724 -1.6435713 0.48883441 3.2164681 2.4881015
 2.260591 -0.44353735 -1.4852915 1.6689285 2.4853523 4.0166907
 1.6587288 2.1414428 -2.345953 2.2104766 1.0826895 4.6974511
 2.0520041 -1.1456965 -2.0349998 1.9673773 -0.48336741 4.3270335

HOPKINS & PEARSON: 3D MORPHOMETRICS IN TRILOBITES

1.0103961 -1.9339646 3.1054983
-0.72397977 2.9184775 2.9515741
-1.3052955 1.7144179 3.9986732
-1.4111145 0.43133411 4.3077607
-1.066968 -0.76326627 4.1778178
-0.23605447 -1.8667369 3.3774145
ID=AMNH-FI_101477_B

LM3=67

5.4422598 -0.68067598 1.6948135
3.0511565 -0.60562694 4.6303759
1.9856319 -1.6391088 -0.084500313
0.4048624 -1.3358785 1.5872278
1.4340863 -1.5808405 -0.22472131
0.18347979 -1.3352346 1.1605444
4.9092684 -0.014153934 1.4671817
2.6843832 0.13206871 4.1413345
1.8297403 -1.0523808 0.0068130493
0.57560754 -0.96187776 1.5292668
1.2350919 -1.2982765 -0.15174389
0.23743176 -1.0341711 0.96604729
1.2595663 -0.73399532 -0.88164234
-0.36365318 -0.63004678 1.0548058
2.3940058 -0.93405813 -2.3862228
-1.7606583 -0.64758372 2.5340347
3.473474 -4.0253682 2.6328368
4.9395409 -0.12049232 3.8707037
5.3641295 1.3454964 4.1635118
0.75419998 -2.3584621 0.46019816
3.8134246 -0.68894732 -2.7542443
-1.7372775 -0.34296656 3.6365185
-3.8237057 1.1992224 4.2874947
-2.8390141 1.2921895 4.883182
-2.2679584 1.6629606 5.2364693
-1.2863846 1.8680667 5.4705219
-0.32593966 1.9273975 5.6266937
0.72513866 1.7033912 5.6087875
1.5832977 1.415009 5.511055
2.3609729 1.1557248 5.2278318
3.2039223 0.63943243 5.0321245
4.1467085 0.37378678 4.5338516
5.5891237 0.20120586 3.1264095
5.8767939 0.203621 2.0777531
6.13732 0.4256708 1.0236621
6.2717662 0.79332978 0.096181393
6.2927694 1.170109 -0.95650244
6.1154284 1.269819 -1.8848162

5.7720299 1.2012604 -2.6879728
5.4046707 1.0034938 -3.2961714
4.8603811 0.69705206 -3.8352699
3.9462147 0.28056741 -4.3468447
2.5731251 -2.2108843 0.27039114
2.0146904 -2.8420177 0.62226099
1.5411052 -2.9944792 1.0413289
1.1301706 -2.7033567 1.5296632
0.84820157 -1.865629 2.0797257
3.5535362 -2.1729424 0.48749328
3.0762625 -3.5297575 1.2861706
2.6572609 -3.7726488 1.9155117
2.064445 -3.404779 2.4813876
1.3504505 -1.8723962 3.1065328
4.3497572 -1.9005312 0.81341004
3.9735863 -3.4439261 1.8323388
3.473474 -4.0253682 2.6328366
2.7458243 -3.4576807 3.3516381
1.9020736 -1.6586758 3.8619113
5.0101137 -1.4097288 1.1817462
4.9693365 -2.6033757 2.319943
4.4356995 -3.1249428 3.525111
3.4666116 -2.4214025 4.1501851
2.4699659 -1.2388147 4.3645229
5.4422598 -0.68067598 1.6948134
5.2952747 -0.26721004 2.9458559
4.9395409 -0.12049234 3.8707032
4.1873269 -0.22541031 4.4918852
3.0511568 -0.60562706 4.6303754
ID=AMNH-FI_101479_A

LM3=67

5.3427305 -0.66039902 1.6073172
2.9198008 -0.72663945 4.5918384
1.9414301 -1.6466676 -0.11709785
0.4504292 -1.2530879 1.5567932
1.3692946 -1.5081 -0.22104192
0.16411841 -1.2966716 1.1860514
4.9197125 -0.0032668267 1.494854
2.740098 0.14829925 4.2185893
1.8599048 -1.0447626 0.019847915
0.61278772 -1.1642268 1.5563575
1.3045223 -1.1501521 -0.20346814
0.28596568 -1.063799 1.0394979
1.2436166 -0.81488907 -0.88653898
-0.37738132 -0.66629583 1.0530453
2.4509482 -1.095867 -2.3606162

-1.6825495	-0.74644279	2.5145664	5.3427305	-0.66039902	1.6073172
3.4588099	-4.0212317	2.6379254	5.3666158	-0.32714152	2.8768294
5.0295725	-0.21488364	3.8034091	5.0295725	-0.21488367	3.8034091
5.4504538	1.3388866	4.0653481	4.1988106	-0.35146293	4.3722258
0.78740281	-2.3847415	0.53161383	2.9198008	-0.72663945	4.5918384
3.7944288	-0.7025162	-2.7338524	ID=AMNH-FI_101479_B		
-1.6566391	-0.4116689	3.5201719			
-3.8176398	1.2486746	4.3077583	LM3=67		
-2.7788873	1.3737103	4.9745331	-1.2590911	0.84524846	5.6484156
-1.8882924	1.7580087	5.3661623	-4.8631725	0.10419343	2.2168906
-0.93915451	1.9571645	5.5750232	0.96409512	-2.2726612	2.367228
0.078733563	1.8336018	5.6376629	-0.77619553	-2.6856036	0.41806066
1.1103671	1.5268195	5.5560951	0.90765524	-2.1975298	1.5746484
2.0165811	1.1059891	5.3654122	-0.22542477	-2.7090433	0.20889574
2.7871008	0.81055164	5.0797219	-1.26358	1.1133798	5.0168886
3.6127186	0.37661493	4.8162613	-4.4954224	0.49403715	1.9035835
4.5695868	0.21261764	4.2813463	0.60074282	-1.8608674	2.1848593
5.5254588	0.1774307	3.1493831	-0.93416852	-2.2340932	0.60070419
5.8709559	0.17143436	2.0545268	0.92780161	-2.0541344	1.628562
6.0840511	0.43821165	1.1788964	-0.30475876	-2.4483564	0.37815285
6.2554045	0.73143995	0.27805185	1.7296486	-1.5917929	1.5995302
6.2863202	1.0294322	-0.63532162	-0.35620022	-2.0706661	-0.61737537
6.1536994	1.2581254	-1.7125251	3.3940253	-1.6064211	3.2014399
5.8189602	1.2437015	-2.6394911	-1.7433233	-2.59043	-2.3225737
5.355617	1.0089717	-3.3954897	-3.5158868	-3.7322118	4.809927
4.749063	0.73931235	-4.0256009	-4.0573893	1.1394099	4.7334814
3.9989924	0.47916386	-4.5372181	-4.2480974	2.9933746	4.5357962
3.1485047	-2.3350732	0.4283511	0.43799019	-3.6572561	1.1724832
2.3631814	-2.9466901	0.71303612	3.8300314	-1.013592	4.2067065
1.7280432	-3.0826206	1.1150144	-2.8386219	-2.305192	-2.6845007
1.2280644	-2.7239919	1.6682414	-3.4888687	-1.1800237	-6.2926888
0.91644412	-1.8074158	2.3556566	-4.2975445	-0.64061815	-5.4117188
3.7697191	-2.3317211	0.63069332	-5.003891	0.019220062	-4.5080748
3.181932	-3.5732088	1.3457856	-5.5664768	0.74111253	-3.4700427
2.6894884	-3.7970617	1.9848411	-5.8964386	1.2502165	-2.2359602
2.0952799	-3.3944716	2.5733469	-5.9541702	1.3268343	-1.0140791
1.4457812	-1.827425	3.2669299	-5.9017506	1.2799689	0.12494528
4.3729324	-2.0842695	0.85548633	-5.689024	1.2047651	1.2278258
4.0079474	-3.6550467	1.7861135	-5.3173618	1.2152029	2.4955962
3.4588101	-4.0212317	2.6379254	-4.8264656	1.5249342	3.658473
2.8209705	-3.3089292	3.3220606	-3.2939339	1.9393294	5.2172184
1.9743028	-1.6467885	3.9310973	-2.0123358	1.988197	5.8182364
4.9142904	-1.5284301	1.1724391	-0.71074104	2.1699641	6.1681862
4.9565229	-2.6559832	2.2941213	0.67586517	2.4622724	6.5210857
4.4948421	-3.1444914	3.4382076	2.0407448	2.6909933	6.6042552
3.4701169	-2.4600561	4.1357932	3.3714314	2.6611559	6.4200029
2.4732161	-1.2822502	4.3608065	4.2934299	2.2534795	6.0836287

HOPKINS & PEARSON: 3D MORPHOMETRICS IN TRILOBITES

5.1778202	1.6914182	5.6051531	-2.7856615	-4.1548581	4.6272168
5.99401	1.1120335	5.0128679	-4.0037308	1.0353507	4.8556275
6.4370303	0.3548072	4.3000355	-4.2440257	2.8895001	4.6125355
0.73300713	-2.4553092	3.1237776	0.52794671	-3.6512296	1.2252246
0.20578562	-3.7033226	2.6090751	3.8846307	-0.94595265	4.3693771
-0.46950722	-4.0071068	2.0572581	-3.0261862	-2.15909	-2.8852534
-1.0926079	-3.7214682	1.5559831	-3.3466501	-1.445127	-5.9863062
-1.7825429	-3.0309057	1.0273858	-4.3840351	-0.57011598	-5.284749
0.31865117	-2.2039649	4.1201158	-5.0367966	0.050508797	-4.4389496
-1.2725406	-3.6455438	4.1553731	-5.5592489	0.77699155	-3.5508471
-2.2687697	-4.2982674	3.7582612	-5.8756018	1.2992994	-2.6082945
-2.7348168	-3.8411582	2.790549	-5.9809737	1.3792782	-1.3325357
-2.8132954	-2.6170049	1.2450804	-5.9721794	1.3562983	-0.22910976
-0.11649467	-1.5916387	4.8986745	-5.8447504	1.3489398	0.88282967
-2.2112372	-3.155127	5.2786632	-5.518549	1.3015089	2.1363754
-3.5158868	-3.7322121	4.809927	-4.9779139	1.352351	3.3949442
-4.0939827	-3.4369793	3.5408165	-3.1118317	1.7205542	5.3331728
-3.7535434	-2.0508792	1.4481114	-1.9074478	1.9366893	5.860218
-0.58966535	-0.57867867	5.4877505	-0.69973862	2.0976882	6.144206
-2.7972853	-1.5676713	5.9380264	0.54976076	2.3873446	6.4769163
-4.190639	-1.9295403	5.2246475	1.9049578	2.6995175	6.6135073
-4.8047986	-1.8265187	3.8744538	3.1867354	2.6491368	6.4451342
-4.4035587	-1.115115	1.7954096	4.3235564	2.2380905	6.0722046
-1.2590913	0.84524846	5.6484156	5.1508379	1.6614016	5.607976
-2.8973408	1.1327949	5.316844	5.95225	1.1214801	5.0374336
-4.0573893	1.13941	4.7334819	6.4423647	0.74193412	4.3694172
-4.7002316	0.786488	3.6711724	0.52075541	-2.6086214	3.3817644
-4.8631725	0.10419349	2.2168906	0.30930367	-3.6027277	2.7195654
ID=AMNH-FI_101480_A			-0.15441579	-3.9627814	2.1211433
			-0.76509959	-3.8377366	1.6365342
			-1.5635118	-3.2569344	1.2161708
LM3=67			0.18552767	-2.2756691	4.2448831
-1.3121198	0.81788003	5.6934986	-0.82634395	-3.9527888	4.1199608
-4.8915415	-0.038893983	2.3264685	-1.6178801	-4.3046331	3.5888774
0.97542667	-2.4658551	2.285903	-2.2959146	-4.1239691	2.7685621
-0.72329617	-2.740809	0.4175466	-2.9109645	-2.7512093	1.3986773
1.1713805	-2.7789435	1.826592	-0.15983878	-1.621106	4.9548016
-0.082708359	-2.9425368	0.27887005	-1.6256546	-3.6052239	5.2400341
-1.3359923	1.1454012	5.0807157	-2.7856615	-4.1548581	4.6272168
-4.4856124	0.46226928	1.9525237	-3.5513701	-3.6993721	3.4655757
0.64657569	-1.8190663	2.2289801	-3.917573	-2.0495152	1.6403993
-1.0134785	-2.2418199	0.58159232	-0.60358107	-0.5759005	5.5038552
0.96713495	-2.0631471	1.5712528	-2.3817935	-1.8676283	5.8525295
-0.2834003	-2.4307318	0.362602	-3.8306985	-2.4465363	5.2767606
1.7500038	-1.5461097	1.620667	-4.6571136	-2.2094784	3.8738439
-0.39345074	-2.0709071	-0.6646719	-4.5878468	-1.1470052	1.9441687
3.5914998	-1.4949907	3.2715564	-1.3121198	0.81788009	5.6934986
-1.8721371	-2.557863	-2.6721587			

-2.8575642 1.063112 5.4189982
 -4.0037308 1.0353507 4.8556275
 -4.7244196 0.6678617 3.8152816
 -4.891542 -0.038893938 2.3264682
 ID=AMNH-FI_101480_B

LM3=67

-3.6657705 -0.041846741 -0.5635519
 -1.7716579 0.18509972 -4.3906479
 0.62647927 -0.22704017 0.65968037
 1.4008179 0.085929759 -1.4985626
 1.0774992 0.14869474 0.5684166
 1.8331876 0.22778402 -1.0520368
 -3.3971376 0.57803047 -0.62480867
 -1.7404174 0.66220599 -3.9854269
 0.50093389 0.0029390769 0.47526845
 1.4281633 0.1568339 -1.5767528
 1.1381655 0.23922189 0.49485683
 1.8617465 0.2240973 -0.93066609
 1.2556562 0.6283226 1.2313159
 2.4623461 0.72809285 -1.3267279
 0.52674961 0.27170476 3.1758547
 3.4901061 0.69435155 -3.3534203
 -0.96730566 -3.5969784 -1.6916521
 -3.8354011 0.11288485 -3.2920713
 -4.5988083 1.3064771 -3.7243776
 1.9151502 -1.0773089 -0.065307915
 -0.68246365 0.44082135 3.9438791
 3.1058035 0.93567586 -4.6528511
 4.9532881 2.9288623 -6.366024
 3.5485117 2.7314939 -6.9416008
 2.2587206 2.7567976 -7.2299109
 1.0827851 2.7952704 -7.1392374
 0.065929413 2.3664443 -6.7504015
 -0.86783147 1.9448737 -6.3079948
 -1.5123918 1.4853157 -5.7238922
 -2.2040486 1.0137426 -5.2418022
 -2.9627542 0.77049589 -4.6322746
 -3.5906482 0.58608472 -4.0034642
 -4.376266 0.52723628 -2.6168818
 -4.4760876 0.59115571 -1.4228055
 -4.5866346 0.82938039 -0.20843101
 -4.5944767 1.2497958 0.9078598
 -4.435607 1.7755052 2.1720448
 -4.0985775 2.1008217 3.1264009
 -3.6338809 2.3478844 4.056016
 -2.9135137 2.3231714 4.926137

-1.9939284 2.2527063 5.713027
 -0.63927937 2.2010362 6.3482943
 0.19493061 -0.96348029 0.61506599
 0.73298621 -1.7000467 0.20726062
 1.0805563 -1.9208673 -0.35600281
 1.2940952 -1.7001837 -1.0901102
 1.2168403 -0.8621136 -1.927394
 -0.73390663 -1.3026005 0.55994153
 -0.2108309 -2.7045183 -0.25838926
 0.10435145 -2.9293234 -0.93889576
 0.3863017 -2.5768759 -1.8366538
 0.60090649 -0.84559113 -2.883018
 -1.7060033 -1.2786577 0.41428971
 -1.3853503 -3.1537824 -0.6353507
 -0.9673056 -3.5969779 -1.6916519
 -0.54600716 -2.7872694 -2.6773281
 -0.089242004 -0.67657113 -3.6251688
 -2.7052746 -0.85509712 0.089104213
 -2.9374652 -2.3329144 -1.2094872
 -2.55283 -2.72209 -2.6256087
 -1.7994062 -2.0474102 -3.6497421
 -0.89180464 -0.32259929 -4.1041522
 -3.6657705 -0.041846734 -0.56355202
 -4.075346 0.041327029 -2.1255112
 -3.8354008 0.11288486 -3.2920711
 -3.1201842 0.16110833 -4.1082354
 -1.7716582 0.18509965 -4.3906474
 ID=AMNH-FI_101481_A

LM3=67

-3.6947994 -0.072079547 -0.58233786
 -1.7905182 0.099577837 -4.3990574
 0.73496807 -0.42399758 0.70267487
 1.7128124 -0.23307623 -1.4166747
 1.2870922 -0.23727743 0.72132397
 2.1245704 -0.20820777 -1.003749
 -3.4089854 0.58112967 -0.65455484
 -1.7620226 0.6878354 -4.0523863
 0.47389498 -0.023010848 0.3973918
 1.3837969 0.12253422 -1.5324626
 1.1368362 0.11980432 0.42905188
 1.8204792 0.28200784 -1.0908804
 1.2065706 0.68147659 1.1845129
 2.4057617 0.79783392 -1.3763485
 0.54469872 0.41355687 3.0904934
 3.4360008 0.82369369 -3.3486233
 -0.98076344 -3.5988188 -1.6501939

HOPKINS & PEARSON: 3D MORPHOMETRICS IN TRILOBITES

-3.8688498 0.12465478 -3.2274237
 -4.6525731 1.2966473 -3.6250596
 1.9025335 -1.0994519 -0.079812527
 -0.66514182 0.52999055 4.0098486
 3.1099353 0.98318088 -4.854497
 5.0024643 2.8540347 -6.345746
 3.571764 2.7312241 -6.9359846
 2.3632841 2.7645524 -7.2099447
 1.0895367 2.6949718 -7.1367579
 -0.021633148 2.3244734 -6.728405
 -0.83527452 1.9049424 -6.2816057
 -1.5600559 1.4954878 -5.7370787
 -2.2151136 0.99592447 -5.2058516
 -2.9203033 0.72227252 -4.6297894
 -3.666585 0.60618359 -3.9491882
 -4.4301529 0.58582401 -2.4989915
 -4.5558281 0.63287646 -1.3230195
 -4.5880766 0.82610387 -0.21428442
 -4.6294899 1.3220859 0.94975138
 -4.4747601 1.8298389 2.1415546
 -4.0783281 2.1856239 3.261656
 -3.4909554 2.323544 4.2410393
 -2.6908636 2.2369316 5.0933628
 -1.7623596 2.2326517 5.89957
 -0.67286491 2.3551383 6.5226107
 0.0644034 -1.0558921 0.60382986
 0.6478442 -1.7625374 0.15760393
 1.0187697 -1.9697988 -0.43546674
 1.2410296 -1.7155175 -1.1556925
 1.161647 -0.92205799 -2.0132296
 -0.9851836 -1.4131385 0.53743404
 -0.35514399 -2.8017075 -0.29220498
 -0.002290383 -3.0259509 -1.0627449
 0.30754352 -2.6707397 -1.8470213
 0.52119261 -1.0956327 -2.8807254
 -1.9627759 -1.3721327 0.32538274
 -1.4709882 -3.1493723 -0.64595062
 -0.98076344 -3.598819 -1.6501939
 -0.55997312 -2.8615191 -2.5989912
 -0.16434808 -0.98660046 -3.5848432
 -2.8844304 -0.95231962 -0.011584584
 -2.9233124 -2.3647864 -1.2308413
 -2.5700798 -2.7482986 -2.5238204
 -1.8101624 -2.1115947 -3.5907905
 -0.94107461 -0.58728969 -4.0842528
 -3.6947994 -0.072079428 -0.58233798
 -4.0445805 0.061654687 -2.0905042

-3.8688498 0.1246548 -3.2274237
 -3.165493 0.13869244 -4.0749612
 -1.7905182 0.099577837 -4.3990574
 ID=AMNH-FI_101481_B
 LM3=67
 -3.5722094 -0.24745026 -1.7071695
 -0.47055054 -0.27389976 -3.7392018
 -0.36143649 -0.63787413 1.0490985
 1.268723 -0.72601938 -0.11593759
 0.11074495 -0.69055521 1.3434467
 1.372046 -0.72853303 0.40639961
 -3.1530237 0.37512118 -1.4508972
 -0.36958313 -0.13092346 -3.5595319
 -0.29847646 -0.37271935 0.8865906
 1.1763295 -0.4333168 -0.36452019
 0.14131188 -0.32293218 1.1480926
 1.320461 -0.33570576 0.26040828
 -0.0750103 0.17949007 1.729516
 1.8551655 0.030126844 0.28211498
 -1.5342112 0.18179357 2.9028797
 3.4219868 -0.27126798 -0.69311714
 -1.0781155 -3.4027755 -1.2791549
 -2.8665667 -0.053713825 -3.7595415
 -3.3332453 0.98276949 -4.4249001
 0.66673231 -1.4308333 0.91529655
 -2.8423805 0.35118237 2.9912567
 3.8607373 -0.12656352 -1.8540077
 NA NA NA
 5.5675507 1.3304554 -2.9115925
 4.7533064 1.4990699 -3.7904654
 3.8260977 1.652694 -4.422945
 2.8019006 1.5802948 -4.7723265
 1.850152 1.2820729 -4.8772774
 0.8935647 0.97083253 -4.8684559
 -0.021623611 0.63224792 -4.720849
 -0.84161305 0.38066056 -4.5733633
 -1.8086715 0.27290645 -4.4316788
 -3.602212 0.19972751 -3.0676775
 -4.1453519 0.45132297 -2.1483397
 -4.5643692 0.8527472 -1.3233161
 -4.8981376 1.3470654 -0.42847967
 -5.0450039 1.7224867 0.35847044
 -5.0317831 2.0208454 1.3190794
 -4.9506278 2.1209481 2.2051868
 -4.7056823 2.1474309 3.1603251
 -4.1877875 1.9555376 3.9761496

-3.5288334 2.2030289 5.0676303
 -0.73117328 -1.182041 0.77669287
 -0.1976881 -1.7649165 0.72055429
 0.28545812 -1.9446926 0.4505088
 0.68871915 -1.672472 -0.040923912
 1.0916926 -1.1161963 -0.71263748
 -1.6893117 -1.3715231 0.22354591
 -0.95166385 -2.6117873 -0.093190983
 -0.38786325 -2.861058 -0.45007902
 0.16564493 -2.6103094 -0.83931857
 0.80592293 -1.4155436 -1.4720916
 -2.4975617 -1.2840734 -0.3526457
 -1.7710971 -2.7640309 -0.86386871
 -1.0781155 -3.4027755 -1.2791549
 -0.27181801 -2.9730849 -1.7717478
 0.52580655 -1.4083456 -2.2537885
 -3.1351511 -0.90893227 -0.98896885
 -2.8095951 -2.1317227 -1.7626148
 -2.0416858 -2.6741941 -2.5341938
 -0.92575157 -2.2682333 -3.0241387
 0.043531213 -1.0108552 -2.976105
 -3.5722086 -0.24745022 -1.7071699
 -3.436676 -0.099527687 -2.9936662
 -2.8665671 -0.053713907 -3.759542
 -1.8661188 -0.10386725 -3.9468114
 -0.47055119 -0.2738997 -3.7392011
 ID=AMNH-FI_101482_A

LM3=67

-3.5601053 -0.21157345 -1.6904091
 -0.48612237 -0.27151057 -3.756464
 -0.36174774 -0.61213464 1.0405087
 1.2750759 -0.72802186 -0.11229667
 0.11448121 -0.72806758 1.3410532
 1.3312483 -0.75078702 0.40686938
 -3.1697927 0.37613276 -1.4487293
 -0.41762304 0.18123159 -3.5226591
 -0.35200644 -0.29267117 0.95659703
 1.1363131 -0.41000146 -0.24841991
 0.10044742 -0.27688855 1.1829709
 1.2621869 -0.33660552 0.31500092
 -0.15328979 0.21005258 1.770319
 1.8671107 0.052038155 0.25412464
 -1.5352354 0.12637702 2.9115562
 3.3609853 -0.24930811 -0.6663599
 -1.133189 -3.4094737 -1.3247099
 -2.8949137 -0.043665845 -3.7312779

-3.341713 0.85109979 -4.390635
 0.6192739 -1.4586762 0.90336704
 -2.842124 0.40452573 3.0297031
 3.9456885 -0.076026887 -1.9007628
 NA NA NA
 5.6164093 1.3297926 -2.8291445
 4.9737082 1.4299673 -3.5685406
 4.1729059 1.5812172 -4.2062464
 3.3247302 1.6376603 -4.6456442
 2.240654 1.4586586 -4.8645859
 1.265234 1.099499 -4.8901463
 0.16543198 0.69605434 -4.7830019
 -0.84495783 0.42292032 -4.6084995
 -1.9608097 0.25522786 -4.3804288
 -3.5951924 0.20638682 -3.0967689
 -4.1138115 0.46186161 -2.2213638
 -4.5592971 0.87120628 -1.3544827
 -4.9146409 1.3974302 -0.44046056
 -5.0385132 1.8581554 0.65315437
 -5.0637679 2.1445067 1.6870821
 -4.8478522 2.1916814 2.7451472
 -4.4856586 2.0880291 3.630933
 -3.98107 2.0866246 4.3202853
 -3.4733686 2.1583073 5.0738258
 -0.99199963 -1.117346 0.7060141
 -0.34747639 -1.7807202 0.65373111
 0.20956069 -2.0018346 0.38529086
 0.72324044 -1.8535663 -0.10034274
 1.0623708 -1.1572053 -0.78475761
 -1.8306406 -1.3707116 0.13664272
 -1.0472306 -2.6023266 -0.11812215
 -0.45158184 -2.8692205 -0.42186135
 0.11724424 -2.6612294 -0.88869423
 0.74263275 -1.4717439 -1.6051155
 -2.5643063 -1.3142219 -0.41224471
 -1.8038552 -2.7582576 -0.89907068
 -1.133189 -3.4094739 -1.3247099
 -0.33042338 -3.0093839 -1.8637804
 0.44623461 -1.4527328 -2.3938677
 -3.1489999 -0.92395437 -1.0174547
 -2.8424439 -2.0919399 -1.7996132
 -2.0855746 -2.6144195 -2.6079073
 -0.97580445 -2.2046082 -3.0840747
 0.057871867 -1.0492578 -3.1299438
 -3.5601056 -0.21157344 -1.6904088
 -3.4469442 -0.077826582 -2.9635351
 -2.8949137 -0.043665823 -3.7312779

HOPKINS & PEARSON: 3D MORPHOMETRICS IN TRILOBITES

-1.9146031 -0.11363 -3.9520953
-0.48612198 -0.27151057 -3.7564642
ID=AMNH-FI_101482_B

LM3=67

3.7829285 0.085330494 2.7207932
0.67210102 0.3847594 4.6860428
1.2397509 -2.0696692 0.59834599
-0.4777925 -1.7931457 1.6391175
0.81898165 -2.2172468 0.3620868
-0.41412497 -1.8269745 1.038867
3.498965 0.39521879 2.3899245
0.56699586 0.69926816 4.2136898
1.320194 -1.7956251 0.63395071
-0.30590647 -1.4872241 1.5587227
0.75864863 -1.8528365 0.30063772
-0.40133154 -1.6758773 1.0588834
1.0668049 -1.6438644 -0.44102001
-1.0545835 -1.4035125 0.83810043
2.5774527 -1.9753848 -1.400836
-2.8543429 -1.3572423 1.8192291
2.0476851 -3.2955661 4.1468811
2.6690731 0.89628214 4.5024114
2.9582591 2.2031395 4.7004881
0.21703219 -2.8294528 1.0350718
3.6702824 -1.742795 -1.4090648
-3.2299078 -0.91461718 2.7815342
-5.5272951 0.19730532 2.2209301
-5.0625792 0.77376437 3.0165462
-4.4949431 1.3176425 3.555933
-3.7066689 1.6923352 4.032259
-2.8780456 1.8803327 4.4276524
-1.9592609 1.9427505 4.7680321
-1.0224223 1.7514324 4.9723454
-0.11616039 1.5562174 5.0421457
0.79194474 1.4186444 4.9729681
1.7512939 1.2242635 4.9049349
3.564352 1.1359842 3.8504686
4.0085039 1.0838758 3.1057718
4.4943686 1.1243695 2.3700666
4.8729048 1.1583258 1.4914911
5.2138891 1.2292836 0.6146605
5.4231625 1.2315955 -0.29428387
5.454195 0.86781716 -1.3550367
5.3308039 0.33960572 -2.2839694
4.9957809 -0.32991499 -3.1569958
4.4980154 -0.8448965 -4.0694065

1.6623765 -2.4212871 1.2136387
1.2781249 -2.9177814 1.5715548
0.83338654 -3.0760589 1.8675573
0.24061212 -2.8731477 2.1595066
-0.33471668 -2.0133803 2.4391415
2.5799353 -2.0804632 1.6251777
2.0762622 -3.1935265 2.6447573
1.5000693 -3.429131 3.1866047
0.72494537 -3.1309092 3.4293354
-0.27174565 -1.7270696 3.2494557
3.2572217 -1.5664867 2.0026591
2.7266243 -2.8358216 3.3549767
2.0476851 -3.2955661 4.1468811
1.061442 -2.8500707 4.4243474
-0.10253588 -1.247237 3.9083118
3.6615949 -0.84352905 2.3687279
3.3635092 -1.6872597 3.8706956
2.5265374 -1.8715705 4.7698321
1.4355564 -1.4659126 4.9002194
0.2052215 -0.54476374 4.3990784
3.7829289 0.085330389 2.720793
3.3607864 0.65932178 3.8231306
2.6690729 0.89628208 4.5024114
1.7815694 0.8098371 4.8121438
0.67210138 0.3847594 4.6860423
ID=AMNH-FI_101483_A

LM3=67

3.7802033 0.073767826 2.7205019
0.62976551 0.36875093 4.6409111
1.1710098 -2.0883493 0.53091025
-0.47436178 -1.9168832 1.5481772
0.78043163 -2.2508683 0.33420753
-0.4813534 -2.1645472 1.1255748
3.5479484 0.43633404 2.4156327
0.72580874 0.64618075 4.3392463
1.3106605 -1.6685131 0.54941797
-0.32478201 -1.4732097 1.5793638
0.74479926 -1.8505037 0.26983261
-0.39723206 -1.6756161 1.0551562
1.0409093 -1.6877342 -0.43919849
-1.0986621 -1.3866607 0.86327362
2.6077127 -2.1138647 -1.4580607
-2.7076454 -1.4058977 1.7862625
2.0685272 -3.3120787 4.1094799
2.6581497 0.82786745 4.5353441
2.8630202 2.1085136 4.7795215

0.20913397 -2.8209453 0.94785476
 3.6588469 -1.7460908 -1.4063656
 -3.2148323 -0.92433459 2.7143192
 -5.5698271 0.20627433 2.1926174
 -5.0922489 0.81470585 3.0255737
 -4.4100866 1.3938717 3.6311464
 -3.5799818 1.8053743 4.1293344
 -2.6198258 1.9264234 4.5446358
 -1.7728357 1.8833545 4.8110456
 -0.82903194 1.6731468 4.9647627
 0.20622301 1.5122666 4.9635077
 1.1188471 1.2927731 4.9946613
 2.007668 1.3051083 4.8511066
 3.4433475 1.1840706 3.9959183
 4.0020628 1.1851964 3.1287923
 4.5060501 1.1634828 2.2492485
 4.9188347 1.1808569 1.3953292
 5.2919426 1.2568491 0.29676771
 5.465498 1.090173 -0.75163174
 5.4496746 0.71445692 -1.7685533
 5.2500401 0.16165888 -2.5457711
 5.0113478 -0.30710411 -3.2103786
 4.522439 -0.77280277 -4.0627317
 1.7619697 -2.37659 1.2407361
 1.2823052 -2.9599063 1.648102
 0.77696419 -3.0840085 1.9611049
 0.22184616 -2.861692 2.1487622
 -0.28737274 -2.1270006 2.2311468
 2.6654692 -2.0986512 1.745223
 2.0944295 -3.2068315 2.7137434
 1.4953865 -3.4338059 3.2110171
 0.75708508 -3.1482141 3.3809314
 -0.20863926 -1.8788863 3.1863739
 3.3119628 -1.6036323 2.1538904
 2.8586755 -2.9847686 3.4093235
 2.0685272 -3.3120785 4.1094799
 1.0923116 -2.9082325 4.3652358
 -0.043588735 -1.3878294 3.9135618
 3.6780009 -0.87725371 2.4816639
 3.3801296 -1.6887015 3.8552887
 2.5666866 -1.9113785 4.7317309
 1.4471562 -1.5332236 4.9004822
 0.23326735 -0.63739878 4.4024024
 3.7802031 0.073767893 2.7205019
 3.3536236 0.6069048 3.8530571
 2.6581497 0.82786745 4.5353441
 1.7552017 0.76422173 4.8369823

0.62976527 0.36875099 4.6409111

ID=AMNH-FI_101483_B

LM3=67

1.0677705 -0.35549358 -2.3715458
 2.40642 -0.22713138 0.37199497
 -1.4925137 -0.26179919 -0.66063738
 -0.79851186 -0.1417373 0.88221741
 -1.7880802 -0.22558634 -0.33272767
 -1.2165134 -0.096254267 0.83708835
 1.0424165 -0.022341682 -2.2824068
 2.2445769 0.067111798 0.27409077
 -1.2884321 -0.090621926 -0.65052235
 -0.61269283 0.038050041 0.74080545
 -1.5575542 0.1042008 -0.44117245
 -1.0606432 0.17270969 0.70951027
 -2.0163813 0.24560791 -0.7420435
 -1.0545979 0.41736871 1.2266093
 -2.7393394 0.23766333 -2.0892355
 -0.57021761 0.49343592 2.7197757
 0.36321402 -2.6744723 -0.31772476
 2.5618339 -0.31527328 -1.4134464
 3.3258786 0.34783444 -1.6817335
 -1.5894213 -0.72032225 0.27059984
 -2.6573033 0.26556659 -3.1936874
 0.39653468 0.54250032 3.3259645
 0.5806284 1.9468356 4.9964132
 1.3259242 1.8476193 4.6783962
 2.0108078 1.7695923 4.2857723
 2.5906434 1.729865 3.7482195
 2.931314 1.5643935 3.1658096
 3.1146352 1.3146352 2.5786071
 3.2036872 0.97908056 1.9340649
 3.190634 0.57468444 1.1452986
 3.0633504 0.1767545 0.30275726
 3.0100846 -0.064724274 -0.63671678
 2.5559421 -0.11512081 -1.8134203
 1.8014091 -0.045446903 -2.6139965
 1.2716358 0.23905639 -3.1768589
 0.66470385 0.59043998 -3.8254151
 -0.048274517 0.95915937 -4.3705716
 -0.77651894 1.2042813 -4.6795425
 -1.5149688 1.3133588 -4.8256574
 -2.2506552 1.2864624 -4.7648406
 -3.0334988 1.3522503 -4.648263
 -3.7810602 1.4286057 -4.3652744
 -1.168238 -0.66096121 -1.1268128

HOPKINS & PEARSON: 3D MORPHOMETRICS IN TRILOBITES

-1.2203794	-1.2434337	-0.52957737	-2.6782994	0.32678843	-3.2056627
-1.0717022	-1.426616	0.007738465	0.36489415	0.53231913	3.2857008
-0.77359563	-1.2410406	0.48912284	0.58275652	1.9838449	5.0284595
-0.27871943	-0.65026009	0.88481146	1.3208141	1.814411	4.6544962
-0.7252546	-0.86300236	-1.5751625	2.1009564	1.787062	4.250844
-0.63030255	-2.0668669	-0.75277835	2.6666436	1.6843227	3.6220627
-0.33225411	-2.2753284	-0.088513345	2.9984417	1.5382097	3.0625691
-0.070111424	-1.930774	0.46955416	3.16009	1.2493151	2.4597917
0.36866307	-0.70351851	0.97088748	3.2130618	0.92820597	1.8371015
-0.21160941	-0.88858813	-1.9400302	3.212373	0.56652617	1.110435
0.068154983	-2.2268176	-1.0787789	3.120755	0.24777403	0.34124422
0.36321408	-2.6744721	-0.31772476	3.0192223	-0.013609382	-0.53648758
0.68824172	-2.1475613	0.36796391	2.0004172	-0.062242191	-2.3749039
1.0404092	-0.69388455	0.97943175	1.4410391	0.12356231	-3.04702
0.377581	-0.73038727	-2.2313676	0.95276165	0.42562196	-3.5380235
1.0032216	-1.856151	-1.6383998	0.38307142	0.74334669	-4.0601826
1.5176085	-2.2235444	-0.8138839	-0.24353075	1.0448476	-4.4742851
1.7494121	-1.7422131	0.071795084	-0.89833593	1.2444779	-4.7297292
1.7054536	-0.51304138	0.73267692	-1.5385957	1.337435	-4.853272
1.0677706	-0.35549361	-2.3715456	-2.2994199	1.3071585	-4.7725668
2.0067663	-0.33808428	-1.9771985	-3.0420506	1.329141	-4.6205812
2.5618341	-0.31527334	-1.4134465	-3.7227578	1.3306296	-4.2232203
2.7042279	-0.27980673	-0.62089884	-1.1017535	-0.87538958	-1.0748338
2.40642	-0.22713138	0.371995	-1.2179434	-1.2833956	-0.45299283
ID=AMNH-FI_101484_A			-1.1087203	-1.3621886	0.074865259
			-0.80468792	-1.1775504	0.52497858
LM3=67			-0.29426995	-0.68830687	0.86922425
1.096437	-0.42063284	-2.3630733	-0.60756338	-1.0028614	-1.5744227
2.3683577	-0.27177575	0.39753151	-0.61837983	-2.0961921	-0.73263073
-1.4982443	-0.2656703	-0.6559701	-0.41971707	-2.2220566	-0.095124617
-0.76962578	-0.14090776	0.8453474	-0.14613058	-1.9252669	0.43868247
-1.7626357	-0.22041446	-0.34476089	0.33431292	-0.81475735	0.92804575
-1.2056136	-0.079979651	0.82862043	-0.077480629	-0.97024745	-1.9567963
1.045164	-0.02235944	-2.285023	0.10555165	-2.2373955	-1.0802639
2.2426658	0.066429935	0.29242665	0.32961991	-2.6732528	-0.33021787
-1.384644	-0.053229913	-0.68198752	0.6268357	-2.1723366	0.33707166
-0.64202756	0.0027605467	0.71070677	0.98461485	-0.80796975	0.92619526
-1.5542194	0.092314966	-0.36075747	0.49057141	-0.77628982	-2.2201669
-1.0738561	0.19271481	0.73210233	0.99780148	-1.8186333	-1.6635695
-1.9570341	0.44837302	-0.69193029	1.4331847	-2.2591901	-0.8889035
-1.0823197	0.54987407	1.199507	1.6809218	-1.8354586	0.059224308
-2.7092719	0.25124961	-2.0486488	1.6488806	-0.60508209	0.68740404
-0.5471487	0.52026492	2.7597656	1.096437	-0.42063272	-2.3630731
0.32962	-2.6732523	-0.33021784	2.0657766	-0.30546731	-2.0136817
2.5904191	-0.23239544	-1.4217377	2.5904191	-0.23239547	-1.4217377
3.295876	0.33024469	-1.7276239	2.7168388	-0.23622024	-0.6174854
-1.5832715	-0.69423592	0.31282783	2.3683577	-0.27177572	0.39753142

ID=AMNH-FI_101484_B

LM3=67

0.97087002 -0.81376255 -2.8168809
 2.5565314 -0.9460234 -0.65713024
 -0.86777925 -0.82840329 -0.69799232
 0.24660283 -0.83093697 0.54236269
 -1.0161757 -0.66631031 -0.34923315
 -0.0082050562 -0.68524235
 0.71940994
 0.86482751 -0.44077185 -2.6791091
 2.3903861 -0.51796085 -0.65190959
 -0.72507495 -0.58586812 -0.72463298
 0.12840395 -0.61842752 0.37217391
 -0.93367499 -0.47325748 -0.33499765
 -0.2161268 -0.57153267 0.51505619
 -1.2881021 -0.037575208 -0.46805716
 -0.15497637 -0.138961 0.91379452
 -2.2313013 -0.044109024 -1.5608878
 0.55600786 -0.29118186 2.1489654
 1.35567 -2.9662938 -1.5523945
 2.4642947 -0.78093415 -2.2105558
 2.9644861 -0.080485195 -2.5945754
 -0.75491476 -1.2131854 0.12030506
 -2.3522601 0.15906657 -2.5920076
 1.4708411 -0.4177658 2.4140146
 1.61338 0.64397526 3.9073837
 2.1877871 0.66606623 3.5042958
 2.7022829 0.70199484 3.0070157
 3.0281878 0.68665564 2.4650321
 3.2181778 0.58405465 1.8762796
 3.2848644 0.38943517 1.3146446
 3.3190269 0.17929687 0.7313745
 3.2612152 -0.13193978 -0.019376755
 3.1478274 -0.36944294 -0.66888571
 2.9299078 -0.5984475 -1.4023273
 1.8336465 -0.5069716 -2.9309669
 1.2862411 -0.30837744 -3.3378005
 0.75559258 -0.023867864 -3.6760144
 0.246696 0.29703578 -3.9214888
 -0.29958475 0.6655671 -4.1523576
 -0.90357316 1.008298 -4.2700729
 -1.5584886 1.2349591 -4.2212987
 -2.1889551 1.2851604 -4.0335183
 -2.7705288 1.3245389 -3.7416635
 -3.3052258 1.3772695 -3.2858224
 -0.61041713 -1.2576015 -1.0282139

-0.5322547 -1.6675302 -0.66575587
 -0.33050108 -1.842013 -0.31804168
 0.051952265 -1.7276028 0.050651811
 0.61000967 -1.2891223 0.40347692
 -0.33646253 -1.3649635 -1.7066319
 0.13212791 -2.4995079 -1.4722642
 0.55935913 -2.9451764 -1.0340352
 0.92340094 -2.597877 -0.38749862
 1.189273 -1.469126 0.31533915
 0.030977389 -1.3201139 -2.2229743
 0.81028384 -2.5453777 -2.0294416
 1.35567 -2.9662938 -1.5523946
 1.6336955 -2.5413206 -0.8343159
 1.7101092 -1.5115389 0.16185123
 0.46774057 -1.1350459 -2.5879056
 1.3895345 -1.9681695 -2.4066703
 2.0033252 -2.3325837 -1.9842279
 2.2089849 -2.0314016 -1.204766
 2.2018826 -1.3504791 -0.12652147
 0.97087002 -0.81376255 -2.8168809
 1.8843546 -0.76311028 -2.6097145
 2.4642944 -0.78093404 -2.2105556
 2.6943872 -0.84094214 -1.5535123
 2.5565319 -0.94602329 -0.65712994
 ID=AMNH-FI_101485_A

LM3=67

0.88169146 -0.8073802 -2.7990694
 2.5218487 -0.83677655 -0.6671896
 -0.92139053 -0.82048994 -0.60957861
 0.19674927 -0.84211826 0.61976433
 -1.0617368 -0.6966899 -0.28805315
 -0.17095 -0.74811023 0.73923731
 0.85439312 -0.43813598 -2.6956367
 2.4065232 -0.52999657 -0.69393313
 -0.72964787 -0.57381123 -0.71255529
 0.12003314 -0.62092763 0.38796324
 -0.99043036 -0.43343744 -0.39208966
 -0.1977967 -0.61005121 0.55237031
 -1.3121357 -0.052922115 -0.46819401
 -0.14372349 -0.12448351 0.91468501
 -2.2005002 -0.041891798 -1.5218377
 0.55307055 -0.28351349 2.1395817
 0.90620452 -3.0473514 -0.99350381
 2.505471 -0.77958333 -2.1571195
 2.9658751 -0.14267786 -2.5279965
 -0.69301558 -1.215274 0.22176909

HOPKINS & PEARSON: 3D MORPHOMETRICS IN TRILOBITES

-2.353395 0.17601545 -2.5823669
 1.5373678 -0.25968131 2.5888081
 1.674552 0.71632802 3.9127865
 2.2024257 0.65866995 3.4826579
 2.6976752 0.68197161 2.9836116
 3.0587771 0.65580624 2.3418317
 3.2496498 0.49634311 1.6301677
 3.2817776 0.24008583 0.9522047
 3.3034756 -0.010353694 0.29507399
 3.2091582 -0.23882848 -0.29461765
 3.0739088 -0.45998317 -0.89158154
 2.9011924 -0.5813182 -1.5257139
 1.9980279 -0.56942326 -2.832912
 1.5191736 -0.39659077 -3.1632905
 0.97603703 -0.15276739 -3.5365853
 0.37631702 0.27209166 -3.8927355
 -0.25301838 0.63813794 -4.1207428
 -0.8805337 0.99599087 -4.2649741
 -1.5862644 1.2377503 -4.2176752
 -2.2347255 1.3290589 -4.0295687
 -2.8298199 1.3626668 -3.7324281
 -3.3970249 1.3990287 -3.27387
 -0.64043128 -1.1948833 -1.0135798
 -0.52245009 -1.6691493 -0.60386717
 -0.30609119 -1.8459772 -0.22327393
 0.096780822 -1.670512 0.099469304
 0.61315536 -1.2209033 0.4382579
 -0.35723135 -1.3532033 -1.6493838
 -0.060168415 -2.4382164 -1.0739385
 0.2870608 -2.6886561 -0.57505351
 0.66975474 -2.4362593 -0.095513791
 1.1625482 -1.4030485 0.37369031
 -0.0085416185 -1.3411115 -2.1585186
 0.461853 -2.6848938 -1.6301644
 0.90620446 -3.0473514 -0.99350375
 1.3112745 -2.6858032 -0.3940075
 1.6685778 -1.4801086 0.21381074
 0.40042475 -1.1614399 -2.5488446
 1.1883345 -2.2249649 -2.2602034
 1.7730055 -2.517549 -1.6036962
 2.0387263 -2.1535859 -0.88460356
 2.0647495 -1.2099366 -0.19297767
 0.88169146 -0.8073802 -2.7990692
 1.897272 -0.78633243 -2.5902898
 2.505471 -0.77958328 -2.1571195
 2.7006526 -0.79229134 -1.5168681
 2.5218489 -0.83677649 -0.66718942

ID=AMNH-FI_101485_B

LM3=67

0.85794854 0.24622691 -2.1973486
 2.0323992 0.25593674 -0.18596876
 -0.7466923 -0.89537215 -0.7539261
 -0.14827263 -0.79714173 0.39149573
 -0.9687562 -0.9549039 -0.45701849
 -0.48460439 -0.91824126 0.38010323
 0.76441741 0.46854377 -2.132544
 1.8385117 0.48486036 -0.1105864
 -0.64246273 -0.60242057 -0.72387218
 -0.097225904 -0.5733484 0.32091272
 -0.88633764 -0.65162975 -0.40489936
 -0.48689246 -0.6340881 0.35093307
 -1.287353 -0.48399287 -0.59168506
 -0.53442907 -0.43075112 0.7749567
 -2.0315707 -0.59307015 -1.8019712
 0.037220955 -0.5854966 2.0980949
 1.1922464 -2.0700762 -1.1345186
 1.9742742 0.62230521 -1.4798943
 2.1802874 1.4459383 -1.5650902
 -0.60648155 -1.3104297 -0.053937435
 -2.0887718 -0.3026675 -2.6282663
 0.6806078 -0.33609301 2.3864238
 0.41759109 0.40168583 3.8249605
 0.93996763 0.73949498 3.5162556
 1.3579712 0.99376124 3.1654203
 1.6675587 1.2372739 2.7838933
 1.9393349 1.3547105 2.2792811
 2.164762 1.3397857 1.6878802
 2.3038588 1.238421 1.0985084
 2.3535986 1.1082889 0.49936414
 2.2950792 0.9346242 -0.09728837
 2.205626 0.86083359 -0.76581931
 1.560648 0.83563673 -1.9973693
 1.1142294 0.91715252 -2.4195042
 0.58567882 1.0135487 -2.8334465
 0.039450526 1.1409024 -3.1570482
 -0.54059589 1.2044576 -3.3868484
 -1.1501075 1.2238135 -3.5416861
 -1.7711242 1.0933962 -3.5962906
 -2.3153353 0.82312179 -3.5654945
 NA NA NA
 NA NA NA
 -0.33574402 -0.92313534 -1.2629336
 -0.21031435 -1.4318897 -0.83866787

-0.047698811	-1.5939169	-0.4328216	0.57469463	-0.31029308	2.3661189
0.15083534	-1.4339997	-0.065789171	0.4252882	0.44637904	3.8462543
0.38730168	-0.95000011	0.26898566	0.92893982	0.71089852	3.5089869
0.026677439	-0.84500086	-1.677529	1.3707237	0.99240214	3.1391013
0.37364924	-1.8043237	-1.2243221	1.7379894	1.2947581	2.6852379
0.6028527	-2.0135922	-0.73704177	2.0322757	1.3950726	2.1108243
0.783104	-1.7772336	-0.32071969	2.245286	1.3648336	1.4917383
0.92881024	-0.84924465	0.25119716	2.335041	1.2114812	0.88173389
0.35192305	-0.61430085	-1.9600188	2.3221951	1.0842046	0.28732109
0.85223114	-1.7288958	-1.6290464	2.3291492	1.0062377	-0.30349636
1.1922464	-2.0700762	-1.1345185	2.2145228	0.91359365	-0.9340601
1.3675787	-1.7033565	-0.5409717	1.6590753	0.85976493	-1.936203
1.385777	-0.61781132	0.17374703	1.1918248	0.9161191	-2.3570147
0.62462682	-0.25449944	-2.1465497	0.6635654	1.0383497	-2.7763834
1.2689124	-0.96130174	-1.9315584	0.12415171	1.163829	-3.1277957
1.7952832	-1.2789649	-1.4836272	-0.5214684	1.1975152	-3.376771
1.9902858	-1.0246465	-0.73060763	-1.2039623	1.1743238	-3.5429678
1.7234521	-0.23634438	0.0073467549	-1.849509	0.99482626	-3.5724001
0.85794872	0.24622685	-2.1973481	-2.3941181	0.66322398	-3.4622312
1.5508482	0.52854025	-1.9150714	NA	NA	NA
1.9742739	0.62230515	-1.4798942	NA	NA	NA
2.1596096	0.53432953	-0.90598112	-0.34448546	-1.0811787	-1.056174
2.0323994	0.25593668	-0.18596862	-0.23770213	-1.479684	-0.7150467
ID=AMNH-FI_101486_A			-0.087397963	-1.5962198	-0.38594455
LM3=67			0.10083307	-1.4425336	-0.068703063
0.89794528	0.24260157	-2.2158737	0.33086589	-1.0052266	0.23118925
2.0243607	0.25477895	-0.16106734	-0.010342525	-0.99291176	-1.5251968
-0.75667202	-0.89491785	-0.75810766	0.36335635	-1.8429333	-1.1462284
-0.16432953	-0.83449495	0.38166487	0.63013917	-2.022382	-0.75585914
-0.92749429	-0.92199332	-0.46300268	0.7823419	-1.8263326	-0.36198133
-0.47662812	-0.97216362	0.36771357	0.8772189	-0.95145726	0.18501882
0.72038651	0.42917162	-2.118705	0.30419454	-0.74635273	-1.8807204
1.8327923	0.45991451	-0.14955604	0.81904411	-1.7685307	-1.5864767
-0.66175675	-0.59941661	-0.70835328	1.1677759	-2.0814798	-1.1252055
-0.12808156	-0.57580566	0.30574679	1.3409626	-1.7426386	-0.55938029
-0.95802486	-0.65057671	-0.46734625	1.3426641	-0.73655874	0.13223819
-0.46011674	-0.63266617	0.40237376	0.6050083	-0.33583042	-2.1168363
-1.2853966	-0.4907676	-0.64793229	1.2523932	-0.98519814	-1.9282478
-0.54860067	-0.44635469	0.74362373	1.7700047	-1.2757974	-1.5394807
-1.9984879	-0.657336	-1.7804952	1.9832646	-1.0668119	-0.74660522
0.024578094	-0.62711489	2.0063257	1.7102227	-0.3236568	-0.01617185
1.1677759	-2.08148	-1.1252055	0.89794534	0.2426016	-2.2158737
1.985218	0.64315522	-1.4569609	1.5696199	0.54039949	-1.8971893
2.1760769	1.4759234	-1.5567238	1.9852183	0.64315528	-1.456961
-0.60554421	-1.3201032	-0.10083741	2.1580353	0.55048496	-0.87743992
-2.0935445	-0.29886925	-2.6133866	2.0243604	0.25477901	-0.1610675
			ID=AMNH-FI_101486_B		

LM3=67
 0.71300983 -0.1534245 -2.0993252
 1.9982891 -0.19823737 -0.55173063
 -0.62773228 -0.31352523 -0.27401587
 0.10160708 -0.28333282 0.64733338
 -0.77664518 -0.29936278 0.026548684
 -0.20393836 -0.27862939 0.70016146
 0.66028869 0.028403819 -1.9588816
 1.867651 0.11416665 -0.48994571
 -0.55778933 -0.11277329 -0.39344633
 0.15215802 -0.14585203 0.4866733
 -0.69987988 -0.076442115 -
 0.045435607
 -0.13225746 -0.078535922 0.61238271
 -1.0448568 0.072890237 -0.15759325
 -0.0887115 0.071733557 0.96552312
 -1.8733442 0.077976376 -0.98188114
 0.58178091 0.09346161 1.8794744
 0.72067571 -1.885568 -0.79315758
 1.8894961 -0.065262578 -1.7506325
 2.2875612 0.43638149 -2.0842741
 -0.4839015 -0.67357701 0.34312403
 -1.8893706 0.16047475 -1.6608641
 1.2818629 0.13319454 2.0184498
 1.6327548 1.0284811 3.2467723
 2.08254 1.0431802 2.7394357
 2.427321 1.0781671 2.2174695
 2.6299686 1.1166288 1.6879894
 2.7403412 1.0060456 1.1440488
 2.7353115 0.80142492 0.56046224
 2.6742139 0.57981265 0.035055637
 2.5445166 0.35193408 -0.44042277
 2.3809896 0.19427781 -0.94327927
 2.2003617 0.12514895 -1.4064484
 1.5807672 0.11533129 -2.1840334
 1.0535202 0.22732666 -2.4428263
 0.53218961 0.47967216 -2.7227747
 0.054873466 0.72602791 -2.9227271
 -0.46512842 0.95424336 -3.0300803
 -0.99120808 1.0546908 -3.052541
 -1.5770144 1.1365523 -2.9874609
 -2.1105399 1.0432005 -2.7751629
 -2.6111429 1.0379864 -2.510324
 -3.0569456 1.0015168 -2.1899481
 -0.46415493 -0.48105067 -0.6301499
 -0.37224692 -0.89758968 -0.25340682

-0.17102952 -1.0385054 0.046358544
 0.12320542 -0.94077569 0.26853585
 0.51377964 -0.57547915 0.40576926
 -0.19174178 -0.65808356 -1.1180553
 0.064750709 -1.3768858 -0.68779504
 0.27723527 -1.5634688 -0.37510973
 0.57285672 -1.365177 -0.082492545
 1.0120678 -0.61217737 0.23355868
 0.082141355 -0.66550058 -1.532088
 0.39640442 -1.5842028 -1.1699023
 0.72067571 -1.8855679 -0.79315758
 1.0791652 -1.5933232 -0.38050431
 1.4337806 -0.5777868 0.031899281
 0.40824398 -0.49590516 -1.8377395
 0.84685373 -1.19669 -1.6915171
 1.3126626 -1.4602578 -1.3100457
 1.6281835 -1.1787193 -0.79203248
 1.763222 -0.43775386 -0.23187336
 0.71301001 -0.15342449 -2.0993249
 1.4447421 -0.10619429 -2.0898051
 1.8894961 -0.065262601 -1.7506325
 2.1029644 -0.11459126 -1.2631326
 1.9982893 -0.19823742 -0.55173051
 ID=AMNH-FI_101487_A

LM3=67
 0.71033704 -0.12962228 -2.103127
 2.0118661 -0.12750666 -0.57452255
 -0.60877228 -0.28853136 -0.28642702
 0.12775826 -0.36430901 0.60029268
 -0.75871372 -0.28430319 0.028185129
 -0.21555105 -0.33772948 0.70220757
 0.63891625 -0.027065599 -1.9228628
 1.8313843 0.034753159 -0.46238452
 -0.53344643 -0.14056446 -0.2748704
 0.19269815 -0.10508585 0.4822045
 -0.67585421 -0.10199836 -
 0.017958969
 -0.16556695 -0.07351432 0.62448531
 -1.0292597 0.16604088 -0.14612627
 -0.092654228 0.18844177 0.93527317
 -1.7602406 0.076296411 -0.89464998
 0.55574179 0.11046325 1.8310065
 0.70470023 -1.884771 -0.78654122
 1.8853426 -0.064634345 -1.7576447
 2.2881975 0.44999439 -2.0933862
 -0.5148316 -0.64085644 0.39953119

-1.9159458	0.14336829	-1.7619534	2.0118659	-0.12750663	-0.57452273
1.3319724	0.10910173	2.0296755	ID=AMNH-FI_101487_B		
1.5928121	0.98918104	3.2741923			
2.0733953	1.0226536	2.7425451	LM3=67		
2.4114761	1.074175	2.2595577	-0.79347402	-0.012213681	-1.7708064
2.5935574	1.1009802	1.7394909	-1.8105698	-0.12456908	-0.61625266
2.7230868	0.98967314	1.1474725	0.01908493	0.54135126	-0.43874609
2.7456667	0.82941204	0.52000058	-0.49875045	0.5323227	0.23426461
2.6625288	0.56330138	0.0035717487	0.11536837	0.63861293	-0.20981184
2.5203114	0.33106646	-0.47658086	-0.30188572	0.58180505	0.31453276
2.3573561	0.15982117	-0.95217705	-0.68314594	-0.17961733	-1.6376468
2.1826267	0.1141629	-1.4310596	-1.6647627	-0.30586243	-0.52552509
1.6386485	0.11419276	-2.1387281	0.0056854486	0.43494076	-0.42224288
1.1014969	0.18374759	-2.4002771	-0.49941051	0.36238998	0.16455185
0.64893889	0.36150777	-2.6707349	0.1043247	0.45364264	-0.17540509
0.14377332	0.58182192	-2.8679261	-0.29442716	0.40480876	0.27333915
-0.35599875	0.84283954	-3.0004988	0.43906069	0.40174997	-0.24110866
-0.96939218	1.0495875	-3.0479445	-0.28642118	0.32436952	0.61090946
-1.5893568	1.1026469	-2.9640098	1.07518960	0.54562098	-0.92822528
-2.0433197	1.0432262	-2.8030486	-0.86005414	0.28248161	1.3095696
-2.5330868	1.0130367	-2.5336618	-1.2681152	1.3212583	-0.96982014
-3.069118	0.98463148	-2.1744227	-1.6258307	-0.36235836	-1.5037084
-0.42012241	-0.63746482	-0.49797875	-1.8120942	-0.83960485	-1.7295635
-0.24365266	-1.0271736	-0.27608517	-0.16304421	0.90419257	0.0021414757
-0.048603375	-1.1617683	-	1.1868494	0.40969133	-1.48744
0.048569962			-1.4017038	0.092466727	1.4626954
0.18850607	-1.0284957	0.19304289	-1.4761734	-0.42007926	2.3613608
0.46580073	-0.58756	0.40855709	-1.7731256	-0.64604592	2.0759797
-0.14465843	-0.78785861	-1.0257069	-1.9884958	-0.82384908	1.7323763
0.11331435	-1.4408855	-0.69915831	-2.138608	-0.98185253	1.3258052
0.33585775	-1.589054	-0.45269108	-2.2300291	-1.0276493	0.88740277
0.57974011	-1.4507996	-0.14257592	-2.2511005	-0.99656981	0.45333564
0.93619984	-0.70295554	0.19226566	-2.2321463	-0.87947828	0.079534888
0.089100398	-0.78008068	-1.4904099	-2.1441202	-0.74092555	-0.28981102
0.42352253	-1.543128	-1.1227789	-2.0605431	-0.58466989	-0.66154265
0.70470023	-1.8847712	-0.78654122	-1.9491239	-0.53745645	-1.029516
1.0194036	-1.5377082	-0.42214322	-1.2638257	-0.4286297	-1.8826368
1.3647929	-0.68618631	-0.0015698599	-0.81613582	-0.45584387	-2.1287804
0.41126281	-0.54768378	-1.8166274	-0.38230294	-0.53800148	-2.302762
0.84224528	-1.2211088	-1.6732739	0.069636583	-0.61863703	-2.4440002
1.3012584	-1.488026	-1.2946184	0.52572155	-0.63542551	-2.496541
1.6083394	-1.200326	-0.76746607	0.95082533	-0.5880248	-2.4620495
1.7092742	-0.48469287	-0.28233552	1.2868147	-0.45483682	-2.3817773
0.7103368	-0.12962222	-2.1031275	1.6050062	-0.27907288	-2.2266669
1.4414347	-0.10564605	-2.092453	1.9000759	-0.15570982	-2.0476875
1.8853428	-0.064634562	-1.7576449	2.1696615	0.020444561	-1.8023767
2.1023157	-0.093316346	-1.2726328	-0.12820715	0.61338103	-0.70409298

HOPKINS & PEARSON: 3D MORPHOMETRICS IN TRILOBITES

-0.3651512	0.93777478	-0.50743687	-0.17833543	0.90059495	-
-0.56003249	1.0234644	-0.31664523	0.0016688108		
-0.69980431	0.92561865	-0.12178423	1.1978624	0.40647191	-1.4938908
-0.78510618	0.60659194	0.058550831	-1.3732738	0.096769504	1.4365664
-0.30403337	0.57763308	-1.0669714	-1.4703283	-0.41320431	2.3956463
-0.69894791	1.1059144	-0.86306691	-1.7580891	-0.63650256	2.0958877
-0.93576574	1.3144507	-0.66906667	-1.9935079	-0.83400834	1.7310033
-1.090322	1.1038883	-0.41664013	-2.1389823	-0.98024464	1.2933987
-1.1826978	0.48582512	-0.068146743	-2.2258468	-1.0188481	0.8557142
-0.46606451	0.46954256	-1.3718153	-2.2477536	-0.9719438	0.40423343
-0.94029659	1.1287943	-1.2147821	-2.2186031	-0.8362425	0.016440749
-1.2681152	1.3212584	-0.96982008	-2.1376739	-0.70751441	-0.40057969
-1.4524819	1.0565205	-0.63953501	-2.009582	-0.60182679	-0.81223452
-1.4844626	0.32193461	-0.22500548	-1.8534651	-0.52079952	-1.280694
-0.6265018	0.27335653	-1.6110829	-1.3717117	-0.47605658	-1.7991475
-1.1539065	0.68049532	-1.5563629	-0.92249274	-0.45480427	-2.0679047
-1.617739	0.84965479	-1.3523347	-0.47668165	-0.5107528	-2.2695193
-1.7356749	0.59058225	-0.8952145	-0.015504479	-0.59682959	-2.416609
-1.6907107	0.11800028	-0.40922064	0.41293243	-0.61778241	-2.4795659
-0.79347402	-0.012213683	-1.7708064	0.82645339	-0.57595783	-2.4665425
-1.2898438	-0.26085958	-1.7115649	1.2828703	-0.45235249	-2.380425
-1.6258304	-0.36235836	-1.5037081	1.5995867	-0.2408634	-2.2025363
-1.7848637	-0.3161774	-1.1334937	1.9259484	-0.11465398	-2.0010588
-1.8105698	-0.12456909	-0.6162526	2.1575999	0.051627915	-1.7863245
ID=AMNH-FI_101488_A			-0.17933053	0.66873574	-0.69139647
			-0.36176065	0.94844311	-0.4950318
			-0.51928818	1.041186	-0.30413222
LM3=67			-0.66230553	0.93609482	-0.11384674
-0.81932086	-0.045302644	-1.8016489	-0.78585678	0.61475122	0.054334339
-1.81322	-0.14762765	-0.61983216	-0.34964287	0.57902187	-1.1224113
0.026890144	0.53716606	-0.49205881	-0.71686399	1.1516247	-0.88924289
-0.52758503	0.44653019	0.21644923	-0.94015074	1.3208933	-0.65851295
0.11313051	0.58654338	-0.25268626	-1.0571088	1.1047553	-0.40619496
-0.36658084	0.58293706	0.28361136	-1.1399843	0.52689171	-0.060421664
-0.68259215	-0.18756755	-1.6493316	-0.51936615	0.42285737	-1.4453324
-1.708137	-0.3320215	-0.48789763	-0.96837962	1.1034131	-1.2631396
0.0098595023	0.4321526	-0.43274927	-1.2712679	1.3147433	-0.98999369
-0.53015983	0.34802723	0.21569657	-1.4210271	1.0671549	-0.6376369
0.092363656	0.46744958	-0.16221571	-1.4370419	0.37572449	-0.20335969
-0.32775217	0.39032292	0.320153	-0.67912245	0.21071407	-1.6658338
0.42538524	0.426799	-0.22427416	-1.1646398	0.63632882	-1.58205
-0.29787588	0.33094171	0.61966109	-1.5868055	0.8255986	-1.3961945
1.1165636	0.5264017	-0.95870614	-1.7743926	0.63069928	-0.93042791
-0.87899876	0.27795964	1.3359019	-1.6684709	0.15087982	-0.38731471
-1.2712679	1.3147434	-0.98999369	-0.8193208	-0.045302607	-1.8016489
-1.5852969	-0.35747859	-1.5436592	-1.2758238	-0.26170886	-1.775286
-1.7853932	-0.82580763	-1.7611414	-1.5852966	-0.35747859	-1.5436591

-1.7779593 -0.31828263 -1.1675544
 -1.8132197 -0.14762765 -0.61983234
 ID=AMNH-FI_101488_B

LM3=67

-0.49468234 0.43699259 -1.1032288
 -1.3309221 0.14839485 -0.033494435
 0.34441757 0.32597861 0.00043677539
 -0.15917003 0.21153514 0.57758093
 0.42012703 0.3145299 0.20870739
 0.053848922 0.23060758 0.63643277
 -0.43871194 0.30364692 -1.1144656
 -1.3019848 0.060680956 -0.076849222
 0.30609456 0.25466552 -0.047465526
 -0.17905325 0.14510092 0.5222047
 0.39459884 0.19521202 0.16842788
 0.049331427 0.1278611 0.57759672
 0.62749279 0.13766789 0.039893866
 -0.015420437 -0.024105463
 0.79408562
 1.1770244 0.25205031 -0.54877257
 -0.51265025 -0.1782454 1.4565805
 -0.64665401 1.3538121 -0.11243618
 -1.22442 0.23204002 -0.8712157
 -1.5069125 0.027860453 -1.127754
 0.21787786 0.50187403 0.41631585
 1.2783608 0.26611555 -1.1102811
 -0.98378539 -0.29272443 1.588864
 -1.2948809 -0.97667891 2.2593381
 -1.5439682 -0.95092124 1.9138055
 -1.7427883 -0.93779969 1.5812275
 -1.8774967 -0.90197706 1.2245882
 -1.9292812 -0.74045438 0.86562395
 -1.9188128 -0.53938872 0.51501083
 -1.8392472 -0.33755395 0.22291541
 -1.7161419 -0.14976928 -0.074110508
 -1.5865793 0.0071171694 -0.32180285
 -1.4280119 0.10167544 -0.64135718
 -1.0145793 0.20846748 -1.1307182
 -0.66893381 0.20629887 -1.3875206
 -0.36081457 0.11768775 -1.6368523
 -0.036024809 0.032676879 -1.8357635
 0.29910016 -0.079250351 -2.0019352
 0.68274665 -0.15269133 -2.0682962
 1.1013256 -0.17709236 -2.0378036
 1.4396975 -0.16347758 -1.9503994
 1.7025729 -0.14621434 -1.7911773

1.9737424 -0.12587363 -1.6485686
 0.12749715 0.53805143 -0.30260277
 0.045887262 0.75244778 0.042691428
 -0.07081902 0.83678716 0.28768706
 -0.28384587 0.70157242 0.41095534
 -0.5652141 0.41188684 0.45344377
 0.0021569352 0.60005134 -0.52590793
 -0.20427981 1.058134 -0.12723893
 -0.37959492 1.1905766 0.13080819
 -0.57341611 0.94924366 0.28246829
 -0.80876422 0.38108435 0.39542168
 -0.13378854 0.61614835 -0.73982352
 -0.40946496 1.1921899 -0.39389887
 -0.64665407 1.3538122 -0.11243621
 -0.85543591 1.0843748 0.12517418
 -1.0202794 0.33655286 0.30464044
 -0.29503226 0.56821865 -0.94080144
 -0.67334676 1.0016136 -0.7591337
 -0.9983351.1360388 -0.50298661
 -1.1944376 0.9079231 -0.14912817
 -1.1955264 0.25947756 0.16261075
 -0.49468243 0.4369925 -1.1032287
 -0.93807507 0.3207452 -1.06436
 -1.22442 0.23204 -0.8712157
 -1.3790997 0.18736112 -0.52511621
 -1.3309221 0.14839485 -0.03349442
 ID=AMNH-FI_101489_A

LM3=67

-0.47961169 0.43639538 -1.0957344
 -1.3445067 0.16561759 -0.044853806
 0.33793855 0.33412713 0.0022075176
 -0.16159803 0.22138956 0.5749979
 0.41184378 0.31068677 0.19824624
 0.053997815 0.19979477 0.62186527
 -0.44201905 0.2991842 -1.1194662
 -1.3035593 0.057136178 -0.051126182
 0.32013232 0.24925353 -0.035902262
 -0.18059975 0.14193657 0.52509058
 0.40306896 0.20003904 0.18162283
 0.034421563 0.095181458 0.60768056
 0.62555265 0.07233505 0.034896851
 -0.018665314 -0.097914651
 0.77214742
 1.1672878 0.24251513 -0.52979946
 -0.54216194 -0.19004212 1.508065
 -0.66360784 1.3447422 -0.070892632

HOPKINS & PEARSON: 3D MORPHOMETRICS IN TRILOBITES

-1.2104421 0.27020332 -0.85180867
 -1.4849181 0.041955099 -1.1376594
 0.21083891 0.48853451 0.44562584
 1.2752101 0.26754701 -1.1111964
 -0.97527814 -0.3068631 1.6018326
 -1.2965717 -0.97725672 2.2420259
 -1.5514898 -0.95353758 1.9078186
 -1.7477551 -0.93717283 1.5734637
 -1.8857131 -0.89205748 1.193362
 -1.9453449 -0.74622321 0.83685207
 -1.9182839 -0.54343331 0.5208025
 -1.8519592 -0.35808682 0.22774458
 -1.7418532 -0.17045934 -0.047611713
 -1.5908225 0.0059494474 -0.35134315
 -1.4222288 0.10081614 -0.67263937
 -1.0150487 0.20590045 -1.1333871
 -0.7089749 0.20440014 -1.3578765
 -0.38833621 0.13069542 -1.6017352
 -0.069754362 0.03781997 -1.8185828
 0.27777958 -0.069391288 -1.9898479
 0.66170692 -0.15531227 -2.0711739
 1.0336826 -0.18647458 -2.0570266
 1.3822525 -0.16361436 -1.9718893
 1.6562687 -0.15572548 -1.8279562
 1.9169074 -0.15038551 -1.6454012
 0.12565294 0.57581329 -0.16266869
 0.048784159 0.75539941 0.084640391
 -0.040624645 0.78771502 0.29395267
 -0.20666026 0.64639938 0.45129749
 -0.44868803 0.33007374 0.51711458
 0.013545522 0.60732192 -0.47217783
 -0.20653181 1.0606486 -0.12922592
 -0.37790138 1.1897873 0.11167251
 -0.5467065 0.94018054 0.28755122
 -0.72732097 0.34693646 0.44510075
 -0.11541028 0.6083706 -0.73545748
 -0.42025891 1.2119761 -0.37250224
 -0.66360784 1.3447424 -0.07089261
 -0.84149492 1.0420216 0.15702793
 -0.97092271 0.33266971 0.33570254
 -0.28083301 0.5503546 -0.94426644
 -0.70306915 1.0350035 -0.73377156
 -0.99530613 1.0803219 -0.41929987
 -1.1868278 0.88227302 -0.097803012
 -1.1796651 0.27704981 0.1773597
 -0.47961167 0.43639541 -1.0957344
 -0.91419369 0.33920252 -1.0324132

-1.2104421 0.27020332 -0.85180867
 -1.3780446 0.22214292 -0.51759118
 -1.3445067 0.16561756 -0.044853881
 ID=AMNH-FI_101489_B
 LM3=67
 -0.51952595 0.1748357 -1.6051528
 -1.5368407 0.049731787 -0.65348989
 0.082907915 0.63413221 -0.47627831
 -0.49850655 0.57714689 0.086351395
 0.1611836 0.71973616 -0.2524963
 -0.30370736 0.65008062 0.1641531
 -0.47223163 -0.023576707 -1.5669504
 -1.4466313 -0.091777399 -0.63667154
 0.090277553 0.53562802 -0.49826711
 -0.50993681 0.48515359 0.083699673
 0.1577 0.57961315 -0.27331343
 -0.31113073 0.52525145 0.17593923
 0.43733811 0.47791237 -0.30139017
 -0.32297969 0.39391419 0.41244435
 1.0371222 0.57116675 -0.84721303
 -0.91812611 0.35202339 1.0079358
 -1.0898304 1.3982717 -1.0516261
 -1.2803133 -0.14818174 -1.4476147
 NA NA NA
 -0.088975668 0.9325096 -0.094492093
 1.2235492 0.46237782 -1.352514
 -1.3919824 0.19134754 1.0933331
 -1.529057 -0.25928617 2.0617552
 -1.7640045 -0.43710804 1.6485865
 -1.9370899 -0.60822308 1.3525584
 -2.0418594 -0.72195059 1.0194194
 -2.0944815 -0.76736265 0.66176438
 -2.074321 -0.6705727 0.21292329
 -2.0069056 -0.57644469 -0.15591621
 -1.9047201 -0.47391036 -0.4583106
 -1.7697597 -0.37890711 -0.74898553
 -1.615818 -0.27551091 -1.0330703
 -0.88589931 -0.19169706 -1.7200469
 -0.48362362 -0.23475733 -1.908524
 -0.12590957 -0.28291431 -2.0188105
 0.22334075 -0.37652469 -2.1248498
 0.65336514 -0.44923547 -2.1727638
 1.0144708 -0.40919131 -2.1347997
 1.3501191 -0.33388573 -2.0400236
 1.6960566 -0.19498369 -1.8926539
 1.9313991 -0.07570722 -1.7209935

2.196615	0.086443327	-1.499114	NA	NA	NA
-0.029359628	0.68212461	-0.75030333	-0.12487376	0.93027335	-0.076481462
-0.2365247	0.99914742	-0.57243842	1.209969	0.45526242	-1.3328366
-0.40993831	1.1293032	-0.39069909	-1.4008192	0.20230927	1.0870131
-0.61078918	0.98141456	-0.23050062	-1.5402422	-0.27947623	1.9921032
-0.81855482	0.60111648	-0.067632712	-1.7829366	-0.47667766	1.6423612
-0.13314013	0.62847739	-1.0569916	-1.9506664	-0.62481648	1.3310094
-0.54872519	1.180495	-0.91492689	-2.0569091	-0.72560531	0.97438747
-0.80186963	1.3781077	-0.75921744	-2.0911107	-0.74889761	0.63853455
-0.9530195	1.1558315	-0.53352439	-2.0752482	-0.69659257	0.2571311
-1.073809	0.54190892	-0.1907583	-1.9932969	-0.55039781	-0.13649344
-0.24718161	0.52917749	-1.3038132	-1.8787525	-0.42417529	-0.47804117
-0.74887633	1.1902471	-1.2359289	-1.7208962	-0.30301416	-0.81727779
-1.0898304	1.3982714	-1.0516261	-1.5377779	-0.29828149	-1.2065537
-1.2670373	1.1431397	-0.74642253	-1.0959426	-0.2153047	-1.6216526
-1.2892177	0.43691084	-0.32248437	-0.70839942	-0.21497811	-1.8111429
-0.37566715	0.37859023	-1.488513	-0.34464124	-0.24500279	-1.9543581
-0.90809059	0.79897141	-1.5219423	0.089409977	-0.33109447	-2.0832243
-1.3173602	0.94936067	-1.3655493	0.49665463	-0.40697667	-2.1564503
-1.5265468	0.76672363	-0.98716396	0.91755927	-0.40623519	-2.1381302
-1.4457773	0.27268666	-0.47716808	1.3150275	-0.34067297	-2.0466557
-0.51952589	0.17483571	-1.605153	1.6470113	-0.20564707	-1.9117298
-0.96659386	-0.046267912	-1.62389	1.9379551	-0.076352641	-1.7175789
-1.2803133	-0.14818171	-1.4476147	2.231287	0.079712935	-1.4973865
-1.4497494	-0.12311242	-1.1214272	-0.044162586	0.6983667	-0.75433373
-1.5368403	0.049731728	-0.65349001	-0.2177296	0.99951041	-0.53976637
ID=AMNH-FI_101490_A			-0.38741165	1.0953816	-0.34913954
			-0.56075311	0.96847957	-0.18394665
LM3=67			-0.73532021	0.62492019	-0.043497968
-0.53014922	0.1620713	-1.6125138	-0.15379606	0.63304061	-1.0850315
-1.5279636	0.055819724	-0.64525735	-0.54035175	1.1750278	-0.90315682
0.097780347	0.68422055	-0.45873439	-0.7743547	1.3546891	-0.72908449
-0.49457327	0.60285234	0.093250632	-0.92029005	1.1393008	-0.50875735
0.15758777	0.73289156	-0.25152844	-1.0245959	0.55988371	-0.16524763
-0.28766391	0.70208871	0.17653739	-0.27284291	0.51982772	-1.3366734
-0.44971526	0.020917635	-1.5341727	-0.76830959	1.1894099	-1.2498842
-1.4480814	-0.1047352	-0.64946938	-1.0972354	1.3978333	-1.0451062
0.084480882	0.55443025	-0.47705984	-1.2508568	1.140962	-0.72928798
-0.52796566	0.47481287	0.081430435	-1.2596499	0.4511396	-0.29717839
0.17712891	0.58940166	-0.25113285	-0.40023062	0.36097401	-1.5086583
-0.29792738	0.52656114	0.16075218	-0.93130702	0.78980446	-1.5350339
0.43017054	0.51307535	-0.30921245	-1.3135148	0.90953922	-1.3330984
-0.31892419	0.43470487	0.40452743	-1.5259824	0.76131612	-0.9569087
1.0441369	0.63731539	-0.84848714	-1.43914	0.28671259	-0.44772479
-0.95776892	0.41497779	1.0541794	-0.53014916	0.16207132	-1.6125139
-1.0972354	1.3978333	-1.0451062	-0.97088462	-0.037515242	-1.6235274
-1.2785504	-0.12279159	-1.4417949	-1.2785506	-0.1227916	-1.4417951

HOPKINS & PEARSON: 3D MORPHOMETRICS IN TRILOBITES

-1.4983233 -0.093349718 -1.1296664
 -1.5279636 0.055819724 -0.64525735
 ID=AMNH-FI_101490_B

LM3=67

1.3483472 0.17209803 -0.42281544
 0.13820124 0.38961226 -1.070519
 0.46784538 0.25371337 0.62105107
 -0.2813139 0.30840957 0.19468236
 0.26922244 0.19269015 0.7475124
 -0.25070792 0.24413541 0.45230806
 1.3283114 0.082393058 -0.41034579
 0.10068256 0.25120017 -1.1030796
 0.46987897 0.10537046 0.5592103
 -0.23037955 0.22026211 0.180446
 0.25134617 0.062414538 0.69961464
 -0.24632083 0.15927799 0.43565986
 0.39586866 -0.067794919 0.87793207
 -0.47990561 0.078508563 0.39425206
 1.1316409 -0.17674202 1.3527164
 -1.3636799 0.20870627 -0.024105549
 0.70684791 1.4004912 -0.22919279
 0.94470727 0.26407525 -1.1282061
 1.1089283 -0.048660316 -1.5240316
 0.048371635 0.47650456 0.61847377
 1.6876669 -0.307206 1.3164582
 -1.5335248 0.18071963 -0.46175158
 -2.4255707 -0.27707618 -0.60344625
 -2.1590459 -0.30445558 -0.96755791
 -1.8386767 -0.29920486 -1.2402335
 -1.4741583 -0.28334582 -1.4694254
 -1.1079295 -0.18294084 -1.599578
 -0.75179625 -0.079847686 -1.6412792
 -0.39598465 0.026285442 -1.5877995
 -0.026147366 0.11234545 -1.5086923
 0.36386967 0.14514267 -1.4307758
 0.70423377 0.16644241 -1.31293
 1.2042948 0.075913802 -1.0500753
 1.4737287 -0.028985705 -0.79733753
 1.7491131 -0.19078343 -0.5294857
 2.0103154 -0.39837798 -0.25271022
 2.2049088 -0.60832751 0.034533381
 2.3427851 -0.80688578 0.37691736
 2.3894234 -0.92478919 0.74645054
 2.3656714 -0.98378652 1.1853663
 2.2756906 -1.0329968 1.5421846
 2.1272912 -0.99050814 1.9092132

0.66125178 0.37375021 0.46790764
 0.47540316 0.71477121 0.40582985
 0.27583766 0.86362129 0.31770995
 0.079401366 0.774903 0.13466397
 -0.16563921 0.51269323 -0.076078184
 0.87695456 0.42618859 0.2900545
 0.72320783 1.0133634 0.13164763
 0.5317508 1.2520033 0.018451564
 0.25082505 1.0572506 -0.15390396
 -0.16792861 0.53712314 -0.34349969
 1.075326 0.42085326 0.098396324
 0.94310415 1.1257815 -0.070064947
 0.70684791 1.4004914 -0.22919275
 0.34886962 1.1952026 -0.40846631
 -0.12861447 0.54361105 -0.59369886
 1.212044 0.3275229 -0.15448555
 1.163329 0.90859586 -0.41313496
 0.91137552 1.2132833 -0.66441989
 0.46450484 1.0338368 -0.79998189
 -0.028211247 0.49630079 -0.83819008
 1.3483473 0.17209803 -0.42281541
 1.2181768 0.21893422 -0.88038373
 0.94470721 0.26407522 -1.128206
 0.59329945 0.335361 -1.2241174
 0.13820127 0.38961223 -1.070519
 ID=AMNH-FI_101491_A

LM3=67

1.3409104 0.30383793 -0.45905331
 0.13372624 0.38553646 -1.0689716
 0.47234267 0.21180871 0.62950015
 -0.24129021 0.35670331 0.19834363
 0.26116651 0.23017666 0.76179838
 -0.24445868 0.25625628 0.45643717
 1.3180032 0.07557445 -0.39502257
 0.11282432 0.28237537 -1.0623224
 0.49324429 0.11120111 0.54552305
 -0.21915174 0.21741816 0.14601082
 0.279181 0.0628094 0.68450373
 -0.20789415 0.15885334 0.43097842
 0.36810875 -0.12897499 0.87853837
 -0.48887038 0.039676119 0.39637685
 1.121172 -0.17157103 1.3429842
 -1.3429638 0.22876745 -0.021438599
 0.74228925 1.3937001 -0.21636206
 0.93656075 0.20459308 -1.1344926
 1.1033685 -0.062595479 -1.5379417

0.059665561	0.46440908	0.62902731	0.13372627	0.38553643	-1.0689716
1.6991961	-0.27217424	1.2911801	ID=AMNH-FI_101491_B		
-1.5328975	0.18451181	-0.46686673			
-2.4484434	-0.33439648	-0.64344811	LM3=67		
-2.1860244	-0.31728297	-0.96031499	-0.76981217	0.029251661	-1.4409328
-1.9296906	-0.3162244	-1.1933084	-1.5795598	-0.010628377	-0.29601943
-1.6257861	-0.30610037	-1.3826597	0.1107862	0.5261184	-0.42151654
-1.3234379	-0.24491341	-1.5318308	-0.32702827	0.47385651	0.19599771
-0.99918938	-0.15601245	-1.6213341	0.23258507	0.60508084	-0.22104466
-0.66364193	-0.051554196	-1.6324849	-0.1017599	0.53853709	0.25853586
-0.29733086	0.050860133	-1.5663211	-0.73346281	-0.050233636	-1.3925799
0.05189991	0.12783822	-1.5098882	-1.493901	-0.059002254	-0.28472257
0.50300407	0.1559	-1.4036129	0.099300504	0.4364458	-0.41975224
1.2834294	0.028865961	-0.99273986	-0.33844709	0.38369617	0.21476591
1.5764637	-0.088450156	-0.72443378	0.22613755	0.43092692	-0.26224986
1.8152478	-0.25240543	-0.48585713	-0.14788827	0.3874521	0.27713931
2.0539577	-0.44067273	-0.21418023	0.49636197	0.35464558	-0.3554697
2.2358816	-0.6500985	0.082003534	-0.098196983	0.3093735	0.50304925
2.3585718	-0.83362371	0.42443562	0.99344492	0.47328463	-1.0570004
2.4002459	-0.94610566	0.77733105	-0.60715556	0.34530288	1.2863183
2.3880367	-0.99026334	1.1109097	-1.1187353	1.3335294	-0.7369144
2.277689	-1.0096297	1.5256736	-1.4859471	-0.18030699	-1.1076566
2.1243477	-1.0051371	1.8768427	-1.7374854	-0.6557163	-1.326228
0.67108446	0.39938703	0.4540225	0.0039180517	0.80098224	-
0.4705278	0.66759861	0.43996087	0.019399047		
0.27421048	0.80280948	0.39085352	0.9777205	0.32273653	-1.5471749
0.051479153	0.72274023	0.24865851	-1.0313964	0.1371123	1.3924558
-0.19054444	0.46207327	0.034567498	-0.93784857	-0.30138585	2.3111231
0.89334774	0.41948634	0.2780357	-1.240653	-0.50491321	2.0364432
0.69872242	0.96356231	0.16824397	-1.539726	-0.65035719	1.7243191
0.51142985	1.1850266	0.090555944	-1.7203269	-0.76524848	1.39806
0.24739954	1.0279831	-0.055494286	-1.8595138	-0.81305963	1.0524315
-0.16540799	0.53512025	-0.27260464	-1.937969	-0.72112024	0.61628532
1.0926796	0.42096436	0.085241981	-1.9365084	-0.6222207	0.25503337
0.95696962	1.1061256	-0.071052752	-1.8534734	-0.52346396	-0.15091449
0.74228925	1.3937	-0.21636206	-1.771348	-0.41673374	-0.48770094
0.37916964	1.2310945	-0.38694561	-1.656693	-0.35327464	-0.85197645
-0.10739574	0.55178821	-0.55896759	-1.2705483	-0.33627975	-1.4045352
1.2619174	0.3874287	-0.15425904	-0.92505366	-0.35850206	-1.6754446
1.1781545	0.88467902	-0.4425388	-0.59504402	-0.4148013	-1.9008718
0.96809685	1.1464177	-0.70691866	-0.24354044	-0.4646863	-2.0872819
0.50045091	1.0149624	-0.84146303	0.13862723	-0.56721175	-2.2351418
-0.013454362	0.50727278	-0.8289035	0.52545583	-0.5772348	-2.2821321
1.3409106	0.30383793	-0.45905331	0.89265954	-0.51394498	-2.2630868
1.1985052	0.21944542	-0.89710259	1.2457289	-0.4232727	-2.1823273
0.93656069	0.20459306	-1.1344925	1.5696626	-0.30702201	-2.0433195
0.58516699	0.2588028	-1.1896486	1.8956894	-0.16703539	-1.8563752

HOPKINS & PEARSON: 3D MORPHOMETRICS IN TRILOBITES

-0.11362332	0.58499557	-0.73282105	-1.7546391	-0.65293336	-1.2942233
-0.21247105	0.89610547	-0.46381015	0.030983925	0.79833424	-0.027114749
-0.31975555	0.996162	-0.22423171	0.95932746	0.32960892	-1.5415692
-0.44984344	0.86360294	-	-1.038419	0.13842955	1.3986665
0.0054638344			-0.94135523	-0.30978984	2.3202863
-0.59579867	0.48471329	0.1768194	-1.2729654	-0.51509297	1.9979959
-0.30833927	0.53696954	-1.0080523	-1.5468407	-0.67165703	1.7297544
-0.58909392	1.090498	-0.74201727	-1.7610164	-0.80181313	1.3525183
-0.74254853	1.2508057	-0.52085829	-1.884686	-0.77867705	0.9242661
-0.84647143	1.0573688	-0.25019553	-1.9411044	-0.71310455	0.55810308
-0.90478492	0.44347879	0.098541781	-1.9276617	-0.63199323	0.21168661
-0.48041841	0.43148929	-1.2208945	-1.8759627	-0.52246177	-0.092218637
-0.8707068	1.1114801	-1.0079277	-1.791666	-0.42485216	-0.42847848
-1.1187353	1.3335295	-0.7369144	-1.6684618	-0.35709673	-0.83414626
-1.2177497	1.0764843	-0.40102682	-1.3097179	-0.32850128	-1.3675189
-1.176737	0.35627285	0.0011504446	-0.95876265	-0.33219278	-1.6423609
-0.63459563	0.26172122	-1.3649153	-0.62119889	-0.402749	-1.8804517
-1.1386038	0.7540226	-1.2902578	-0.21850514	-0.47067595	-2.0999994
-1.4752805	0.8789494	-0.97530502	0.22207022	-0.57198495	-2.2560506
-1.5577514	0.69135898	-0.56060475	0.62008405	-0.57405877	-2.2915654
-1.4001087	0.20251144	-0.13267757	0.95791602	-0.49937996	-2.2531402
-0.76981217	0.029251654	-1.4409328	1.2765501	-0.40929067	-2.1729722
-1.2086281	-0.12307331	-1.3392117	1.6068151	-0.29187936	-2.0134258
-1.4859469	-0.18030694	-1.1076565	1.878082	-0.14350796	-1.8416433
-1.6266502	-0.15078416	-0.76136506	-0.14981274	0.67465222	-0.66993314
-1.5795598	-0.010628418	-0.29601938	-0.24193862	0.92445105	-0.45089716
ID=AMNH-FI_101492_A			-0.3517583	1.0111849	-0.25984147
			-0.50326318	0.90370846	-0.058966592
			-0.66631222	0.5399102	0.12295073
LM3=67			-0.28616881	0.56531626	-0.95319116
-0.78192973	0.062953942	-1.4432101	-0.59134841	1.1021318	-0.72764987
-1.5581889	-0.032411456	-0.32816315	-0.75797594	1.2573202	-0.51613945
0.11274183	0.52904367	-0.42002141	-0.85198498	1.0725732	-0.26227316
-0.33209753	0.45967987	0.21901417	-0.90222955	0.50040013	0.11243965
0.22026294	0.5863983	-0.23252845	-0.42741537	0.44051945	-1.1860541
-0.091950536	0.558927	0.28242016	-0.85575914	1.1182553	-0.99327362
-0.71299005	-0.058173247	-1.3968742	-1.114387	1.3339797	-0.72768337
-1.5058804	-0.057057355	-0.33858228	-1.1992829	1.0823586	-0.39323032
0.12053859	0.43237552	-0.42802525	-1.1226557	0.38261071	0.021167362
-0.35186422	0.37765279	0.22072673	-0.59368068	0.2718769	-1.3504757
0.21702152	0.43897763	-0.23209321	-1.1217736	0.78542525	-1.2771529
-0.10425752	0.44503611	0.22165227	-1.4906915	0.91998231	-0.93785602
0.48900056	0.33692494	-0.35132575	-1.5318869	0.71118838	-0.53354728
-0.097962856	0.29481366	0.50450516	-1.3674573	0.22954232	-0.096872501
0.98709106	0.45582184	-1.03216	-0.78192973	0.062953934	-1.44321
-0.56487656	0.33462533	1.2242918	-1.218486	-0.11775678	-1.337516
-1.114387	1.3339798	-0.72768331	-1.4860631	-0.19170564	-1.1035086
-1.486063	-0.19170563	-1.1035086			

-1.6202497 -0.16348282 -0.77087981
 -1.5581888 -0.032411542 -0.32816327
 ID=AMNH-FI_101492_B

LM3=67

-1.329854 -0.080952272 -0.37994063
 -1.0143828 -0.28528765 1.1496327
 0.17112017 0.81260687 -0.095848203
 0.31932461 0.70367283 0.50010288
 -0.051001191 0.73613894 -0.18222201
 0.15157795 0.63319051 0.63277137
 -1.2610344 -0.14579719 -0.3933506
 -0.99547255 -0.40718335 1.0200191
 -0.011225402 0.5977264 -0.17337596
 0.1316762 0.47376561 0.62228954
 0.23033398 0.66906643 -0.12395763
 0.34811324 0.53792959 0.49646187
 0.32942796 0.65954477 -0.38336766
 0.53653336 0.48586828 0.66373116
 0.18217015 0.89788145 -1.3576407
 0.75584579 0.38643521 1.6150264
 -1.239163 1.20406 0.53477895
 -1.6061854 -0.47637179 0.41060308
 -1.7912579 -0.97006458 0.36476737
 0.12065959 1.0168855 0.27793035
 -0.10546541 0.71223545 -1.7415522
 0.61442375 0.10409193 2.0214379
 1.3623466 -0.31877714 2.6619198
 1.0204639 -0.54222292 2.6479955
 0.68084097 -0.74417949 2.584806
 0.32929277 -0.92433929 2.4706645
 -0.011846542 -1.0177217 2.2928276
 -0.42654991 -1.0232873 2.0380294
 -0.71238899 -0.93555868 1.7965493
 -0.98125219 -0.83642942 1.4982014
 -1.2038436 -0.72495234 1.185986
 -1.4293389 -0.65882862 0.83038282
 -1.6224513 -0.53733236 0.061495423
 -1.5549726 -0.46378022 -0.39722323
 -1.4780493 -0.47761852 -0.77245295
 -1.3486395 -0.4756552 -1.1943538
 -1.1805382 -0.45500046 -1.5834522
 -0.92899656 -0.38398355 -1.9562988
 -0.62746668 -0.20999928 -2.2360299
 -0.33808136 0.034902256 -2.4256043
 -0.00099611282 0.28289014 -
 2.5812862

0.36485338 0.55802131 -2.6373823
 -0.43727511 0.69880825 -0.25846535
 -0.41626021 0.95769262 0.030389154
 -0.33620459 1.0789673 0.27887788
 -0.2777712 0.93275493 0.54737675
 -0.2134355 0.56342769 0.81628436
 -0.72117579 0.61941576 -0.31879455
 -0.84032905 1.0914294 0.12853464
 -0.82924664 1.2144825 0.44419208
 -0.69984615 1.0131536 0.70223773
 -0.42038855 0.40867323 0.99972308
 -0.96580267 0.48003507 -0.37231374
 -1.2108709 1.0516472 0.12132701
 -1.239163 1.2040598 0.53477895
 -1.0418332 0.92620617 0.87240529
 -0.62100494 0.22053313 1.1316199
 -1.1616837 0.23751967 -0.37687674
 -1.5444933 0.56556183 0.063797608
 -1.682161 0.64715928 0.55616438
 -1.3729537 0.44856974 0.95600647
 -0.81461966 -0.022789944 1.1531579
 -1.329854 -0.080952279 -0.37994066
 -1.5722821 -0.34899899 0.024032103
 -1.6061853 -0.47637174 0.41060308
 -1.459906 -0.46759814 0.80569506
 -1.0143828 -0.28528762 1.1496327
 ID=AMNH-FI_101493_A

LM3=67

-1.3559535 -0.038325474 -0.36808395
 -1.0890844 -0.28109106 1.104728
 0.0056932569 0.69502646 -0.16345274
 0.14529365 0.60249269 0.63581777
 0.21103591 0.77585697 -0.0908463
 0.32738093 0.70520365 0.4999488
 -1.2262998 -0.16766903 -0.42905748
 -0.95342374 -0.41094762 1.0423908
 -0.031453609 0.5975486 -0.16724265
 0.15273523 0.47968599 0.61044073
 0.23261786 0.66857177 -0.13673842
 0.34528947 0.56264615 0.4616003
 0.36732554 0.62583631 -0.39019305
 0.56897545 0.4440622 0.64240414
 0.19578838 0.86805511 -1.3585758
 0.74008608 0.38633519 1.5379114
 -1.2431201 1.2003719 0.53852826
 -1.6208968 -0.46357453 0.30290028

HOPKINS & PEARSON: 3D MORPHOMETRICS IN TRILOBITES

-1.8033543 -0.91392058 0.23521689
 0.18831581 0.99201858 0.24097875
 -0.11352134 0.70789135 -1.7090989
 0.60629821 0.10620067 2.0168295
 1.3620706 -0.2926906 2.6598926
 0.99043131 -0.5476442 2.6384416
 0.64057994 -0.7750718 2.5848322
 0.31500769 -0.95229769 2.4651866
 -0.052037239 -1.0346816 2.2797399
 -0.3769511 -1.0275966 2.0687366
 -0.69179535 -0.9539004 1.8097415
 -0.91907656 -0.84539306 1.5493178
 -1.1869333 -0.72650075 1.2144375
 -1.4712448 -0.67954332 0.78619146
 -1.6042924 -0.54280961 -0.014310062
 -1.553216 -0.46094862 -0.42566648
 -1.4512146 -0.46426216 -0.84863806
 -1.3232598 -0.45412809 -1.2825115
 -1.1007128 -0.4413327 -1.7069631
 -0.82108593 -0.3217594 -2.055064
 -0.53343964 -0.13855036 -2.3072491
 -0.26691008 0.09585166 -2.4532735
 -0.0087981224 0.2977801 -2.5545726
 0.33060837 0.5738349 -2.5648136
 -0.39985275 0.71917719 -0.2320393
 -0.34530947 0.98010075 0.05977308
 -0.28060165 1.0967834 0.32198364
 -0.2278654 0.95355213 0.56390917
 -0.17846265 0.59228015 0.78509754
 -0.76070797 0.60127681 -0.32576489
 -0.79150218 1.0817337 0.13451239
 -0.76750767 1.2185012 0.41857034
 -0.67429256 1.017432 0.68246216
 -0.48346177 0.41883168 0.96539122
 -1.0381238 0.43220672 -0.37556621
 -1.2456881 1.0464801 0.12354583
 -1.2431201 1.2003716 0.53852826
 -1.0987716 0.94359648 0.87792122
 -0.73930204 0.2214594 1.0894994
 -1.2390077 0.22074069 -0.39362204
 -1.5843134 0.54424411 0.033506375
 -1.6705174 0.60863572 0.50802678
 -1.4575142 0.43292356 0.92323387
 -0.93743783 -0.015122761 1.1268742
 -1.3559535 -0.038325492 -0.3680838
 -1.5920525 -0.32891107 -0.051557284
 -1.6208969 -0.46357456 0.30290028

-1.4777235 -0.46020934 0.7008093
 -1.0890844 -0.28109109 1.1047279
 ID=AMNH-FI_101493_B
 LM3=67
 -0.035763621 -0.12137731 -1.108639
 1.0441014 -0.088556744 -0.61034858
 -0.28884673 -0.22490159 0.069831669
 0.28675485 -0.17421785 0.38954961
 -0.30199814 -0.23445743 0.29375041
 0.13679838 -0.17551167 0.52199852
 -0.074792743 -0.020142674 -
 1.0559462
 1.014268 0.04979717 -0.59245521
 -0.30007407 -0.12099033 0.048606098
 0.28002983 -0.063812144 0.33943641
 -0.30920565 -0.1244702 0.2531172
 0.16119421 -0.066126086 0.49074602
 -0.51186001 0.0017909841 0.29658771
 0.2563628 0.076049179 0.68442369
 -1.2910147 -0.13201752 -0.057796001
 1.0214894 0.11444435 1.1569633
 0.37413621 -1.14855 -0.55311406
 0.6948595 -0.025059106 -1.2560236
 0.8578583 0.22873317 -1.6185706
 -0.080062598 -0.3993251 0.43666947
 -1.4475045 -0.086590469 -0.44249129
 1.4015324 0.086441129 0.96015012
 1.8231404 0.71933097 1.5680455
 1.8818694 0.76216376 1.2054913
 1.9656334 0.84210569 0.89834666
 1.9898211 0.8446492 0.53474903
 1.9384111 0.74057847 0.13525796
 1.854241 0.62703568 -0.23509169
 1.6777462 0.45477644 -0.53760505
 1.460593 0.28438044 -0.75803113
 1.2192276 0.16104342 -0.94839525
 0.98289174 0.085313194 -1.1371195
 0.41673836 0.053813539 -1.4075154
 0.088075757 0.088856243 -1.4470696
 -0.21429956 0.17265774 -1.507998
 -0.55612969 0.314385 -1.5428324
 -0.87972939 0.38067573 -1.5062481
 -1.2283171 0.48813301 -1.3827059
 -1.5182742 0.51115268 -1.2072443
 -1.7578639 0.48798355 -0.98366523
 -1.9470025 0.41785109 -0.71493983

```

-2.163053 0.40031815 -0.43214083      0.39765984 -1.1406606 -0.55593085
-0.26537287 -0.31173185 -0.20967491    0.65543592 -0.022471268 -1.2686999
-0.089411795 -0.58999401 -             0.76247472 0.19947836 -1.6381876
0.030097894                               -0.07527402 -0.40990341 0.40862906
0.058544144 -0.69694114 0.10721564      -1.4513097 -0.082885034 -0.43315339
0.2796987 -0.55787319 0.18273127        1.3362892 0.088626653 0.92367196
0.53977984 -0.1997747 0.20394607        1.819128 0.72325528 1.5426681
-0.24184026 -0.34028253 -0.44361508     1.8937998 0.78030038 1.2088546
0.034021534 -0.8363865 -0.34008864       1.9485211 0.805444 0.84053028
0.23026878 -1.0224127 -0.23391339       1.972084 0.80895442 0.40358984
0.45317003 -0.80438346 -0.1149031       1.9225473 0.70678705 0.049227834
0.71966249 -0.21451978 0.023135729     1.8380094 0.59373802 -0.23595232
-0.20774017 -0.32798052 -0.67291987    1.6829877 0.4465377 -0.50463074
0.10135986 -0.93022132 -0.64168185     1.4941831 0.3050279 -0.72361827
0.37413618 -1.14855 -0.55311406         1.257524 0.19473633 -0.93808585
0.6203894 -0.87301326 -0.39487153       0.98472118 0.10674635 -1.1958951
0.86673212 -0.20780087 -0.17114425     0.3920188 0.067360595 -1.4196984
-0.15748404 -0.26373696 -0.89811844    0.051353186 0.085520126 -1.4393697
0.20870703 -0.76863593 -1.0270363      -0.23487836 0.17829847 -1.5041783
0.59572148 -0.90182757 -0.96973997    -0.55557793 0.29679123 -1.5397789
0.82889754 -0.66815704 -0.72674489    -0.90302205 0.3836014 -1.4963996
0.96636134 -0.15759854 -0.38325161     -1.2425609 0.47003227 -1.3631132
-0.035763588 -0.12137731 -1.108639     -1.5295643 0.51936048 -1.2057364
0.38184503 -0.047889691 -1.2589729    -1.807934 0.50660807 -0.94865227
0.6948595 -0.025059117 -1.2560236     -1.9966885 0.42176458 -0.66724777
0.92187285 -0.038110316 -1.0360805    -2.150281 0.35825485 -0.39868879
1.0441014 -0.088556737 -0.61034858     -0.25281131 -0.32732487 -0.18604675
ID=AMNH-FI_101494_A                       -0.094530754 -0.57960117 -
0.017100325
LM3=67                                     0.047096267 -0.68707973 0.10989688
-0.015437841 -0.14878185 -1.1418504    0.26323897 -0.5706355 0.1785275
1.0296857 -0.082068376 -0.64888352     0.52394414 -0.23555966 0.17726637
-0.29887527 -0.2135205 0.08676368      -0.23127779 -0.35003895 -0.44909123
0.30954301 -0.1198779 0.40554512       0.037672717 -0.83994275 -0.33840054
-0.31139547 -0.1937404 0.28802913      0.2334262 -1.0248655 -0.23815908
0.20680737 -0.10290912 0.50578761      0.44747469 -0.83431476 -0.13236797
-0.053387284 -0.049311507 -1.093379    0.69364434 -0.25774312 -0.012182325
1.0426253 0.089049138 -0.62660772     -0.19713195 -0.3364566 -0.69817215
-0.26887703 -0.13505295 0.058560066    0.11868293 -0.95240313 -0.65319967
0.25934076 -0.079680189 0.36362746     0.39765981 -1.1406606 -0.55593085
-0.28922057 -0.14245465 0.2799398      0.62374473 -0.88280827 -0.41185662
0.16466174 -0.066318125 0.48644018     0.84249252 -0.24644996 -0.20675091
-0.51686686 0.0027446656 0.29458666    -0.13054158 -0.27147245 -0.93155909
0.25795496 0.071162589 0.68830442     0.2145188 -0.74631411 -1.0495204
-1.3804554 -0.089448139 -             0.59686899 -0.88150114 -0.97977149
0.072438717                               0.78930861 -0.63142186 -0.72433811
1.0159671 0.1164808 1.1537392          0.95558906 -0.18792763 -0.41902813

```


HOPKINS & PEARSON: 3D MORPHOMETRICS IN TRILOBITES

-0.015437528 -0.14878175 -1.1418502
 0.34969863 -0.06358055 -1.3193247
 0.65543592 -0.022471277 -1.2686998
 0.87830949 -0.029109698 -1.0508611
 1.0296859 -0.082068391 -0.64888346
 ID=AMNH-FI_101494_B

LM3=67

0.5492506 -0.033386908 -0.51806867
 0.69410062 0.045743909 0.43850863
 -0.3431626 -0.24650367 -0.20829636
 -0.20988011 -0.20170225 0.36771631
 -0.44932795 -0.27742341 -0.11643738
 -0.36197579 -0.26698014 0.30530715
 0.50124085 0.10848854 -0.53711689
 0.65888941 0.10473326 0.44321275
 -0.33073521 -0.17943592 -0.1978271
 -0.1960175 -0.15120681 0.3658182
 -0.44693768 -0.22134389 -0.13303316
 -0.35118252 -0.19462961 0.34291101
 -0.58315253 -0.15870573 -0.2913335
 -0.4576664 -0.11230996 0.49441779
 -0.72833312 -0.22804353 -1.0752771
 -0.36615181 -0.080589868 1.381068
 0.49208978 -0.89470434 0.0058630705
 0.91542602 0.11729637 -0.12592074
 1.1737399 0.36524236 -0.20749322
 -0.41210696 -0.45719135 0.074422397
 -0.56501973 -0.16172385 -1.2882023
 -0.11274958 -0.049457885 1.4956208
 -0.27922332 0.30388224 2.0414376
 0.044547319 0.42840582 1.9579923
 0.31961596 0.50645113 1.8051932
 0.54815096 0.52434158 1.5885831
 0.73830467 0.50246495 1.3433564
 0.8315798 0.43382901 1.1023319
 0.90818459 0.35274863 0.8774035
 0.95646322 0.25984877 0.6314373
 0.96107352 0.26289397 0.36584926
 0.98062402 0.21699125 0.13721013
 0.88147736 0.22279762 -0.39059746
 0.77293754 0.28833178 -0.67445201
 0.66524947 0.2763513 -0.89026642
 0.54918516 0.34673786 -1.1353273
 0.38550878 0.39668956 -1.3813862
 0.17562854 0.41436809 -1.5983937
 -0.073972702 0.38339534 -1.7544105

-0.36892629 0.35577267 -1.8507543
 -0.61614871 0.26956788 -1.8970236
 -0.93219209 0.18364125 -1.8983383
 -0.098814867 -0.32476887 -
 0.27347112
 -0.050849792 -0.58344465 -
 0.098809779
 -0.044600405 -0.71614426
 0.046152957
 -0.0093175918 -0.58311665
 0.20461799
 0.0033581695 -0.28028259 0.38867459
 0.07290642 -0.33107546 -0.34703627
 0.19872236 -0.74241805 -0.13259256
 0.25848296 -0.86708277 0.046540342
 0.26033857 -0.70497894 0.22526918
 0.21291533 -0.24276176 0.45268917
 0.22901848 -0.30312413 -0.43366045
 0.40881503 -0.72605401 -0.19755323
 0.49208975 -0.8947044 0.0058630835
 0.492156 -0.71891254 0.24599627
 0.39783031 -0.17769085 0.48508909
 0.38961726 -0.20182535 -0.48957741
 0.63222539 -0.50390208 -0.32067299
 0.78166211 -0.6137144 -0.08358296
 0.77301228 -0.49024466 0.24341047
 0.55993408 -0.083537921 0.48379213
 0.5492506 -0.033386935 -0.51806873
 0.82211775 0.073846512 -0.35913399
 0.91542596 0.11729633 -0.12592073
 0.91480505 0.11959892 0.14610671
 0.69410062 0.045743909 0.43850863
 ID=AMNH-FI_101495_A

LM3=67

0.5410639 -0.022280626 -0.52185941
 0.73913753 0.027647866 0.43507493
 -0.32401341 -0.21527506 -0.20424438
 -0.2201145 -0.22226614 0.36893618
 -0.4608354 -0.28307047 -0.11422253
 -0.37244043 -0.24252161 0.31875384
 0.50550377 0.11418125 -0.54467553
 0.67326748 0.10536461 0.42470205
 -0.32373202 -0.17497173 -0.22024977
 -0.1959399 -0.14849944 0.38122046
 -0.43196893 -0.23308669 -0.13474059
 -0.34044513 -0.19984379 0.33291173

-0.58170938	-0.15213004	-0.2837491	0.4158349	-0.14870967	-0.50365579
-0.45818734	-0.10511769	0.47134343	0.68640608	-0.47290549	-0.31699452
-0.72556329	-0.19573082	-1.0837069	0.82380533	-0.57567686	-0.054756291
-0.35396624	-0.08091303	1.315721	0.79027468	-0.47686112	0.23515111
0.52987045	-0.8914327	0.021541029	0.5756433	-0.1413728	0.45956141
0.91387546	0.14750308	-0.11307143	0.5410639	-0.022280645	-0.52185947
1.1870741	0.3594839	-0.18385623	0.82270867	0.090998784	-0.35201362
-0.38067114	-0.46552038	0.081270337	0.91387534	0.14750309	-0.11307144
-0.58880472	-0.1371543	-1.3073478	0.91353637	0.11952231	0.15404734
-0.12053585	-0.04176873	1.5106502	0.73913753	0.027647857	0.43507496
-0.29566574	0.27872694	2.0441241	ID=AMNH-FI_101495_B		
-0.016089916	0.4061431	1.9696259			
0.26185679	0.49283668	1.8461123	LM3=67		
0.496984	0.53341228	1.6576174	0.45893157	-0.040161241	-1.1621242
0.68680263	0.51442051	1.4307821	0.78705859	-0.022180216	-0.32196516
0.80980301	0.45854864	1.1813258	-0.2320931	-0.3360486	-0.6505059
0.89544725	0.3857815	0.93010867	-0.0049192905	-0.40691569	-
0.94488978	0.25307426	0.64542329	0.1477344		
0.96220231	0.26957339	0.38273749	-0.36097407	-0.41944078	-0.53420377
0.97854471	0.22329155	0.1092779	-0.16605985	-0.42938438	-0.15789557
0.89773655	0.23229063	-0.33876795	0.38734055	0.037309226	-1.1543181
0.77954042	0.25284371	-0.63963819	0.71596801	0.044339798	-0.27325577
0.65102124	0.2779139	-0.91514373	-0.22923648	-0.3043381	-0.65147543
0.52026868	0.33765116	-1.1816959	-0.016836166	-0.31286392	-
0.34389558	0.38725871	-1.4322942	0.17478085		
0.13744241	0.40723833	-1.6427346	-0.31420529	-0.33784288	-0.54507995
-0.1312083	0.37503466	-1.7820249	-0.13475925	-0.3553589	-0.14159971
-0.39363587	0.32236895	-1.855558	-0.47958994	-0.28776103	-0.63851154
-0.6423012	0.26677001	-1.9045336	-0.19124627	-0.27988881	
-0.9393754	0.13660645	-1.8865215	0.0009509027		
-0.14178832	-0.30880046	-0.27204093	-0.7909658	-0.30954933	-1.2834802
-0.073862314	-0.57804859	-	0.0993433	-0.26935312	0.66544944
0.087211668			0.58869648	-0.90927029	-0.69407374
-0.044368427	-0.71411258		0.82388759	0.13714409	-0.81799209
0.076947883			1.1311591	0.45606753	-0.90986085
-0.012637375	-0.5621953	0.21373349	-0.23330969	-0.59180748	-0.34437978
-0.008885907	-0.27300796	0.39052442	-0.76420879	-0.21531215	-1.58213
0.074106142	-0.29537061	-0.38218531	0.34653521	-0.20126741	0.82464361
0.19757381	-0.7446152	-0.12951732	0.33441639	0.10626536	1.429142
0.24743712	-0.8601802	0.067955606	0.53337169	0.23477322	1.2596548
0.246861	-0.7050947	0.22166686	0.71479368	0.30498725	1.0938737
0.1990263	-0.27962127	0.4197062	0.86635947	0.38344181	0.86573052
0.26030633	-0.23849888	-0.45576859	0.97268271	0.3904838	0.60149598
0.44223106	-0.72049922	-0.20615533	1.0219309	0.37672397	0.38174486
0.52987045	-0.8914327	0.02154104	1.0372524	0.33376798	0.14561296
0.50862426	-0.72338068	0.24081182	1.0099959	0.27100852	-0.10650551
0.39540103	-0.24440765	0.45331794	0.96629977	0.22854322	-0.35537547

HOPKINS & PEARSON: 3D MORPHOMETRICS IN TRILOBITES

0.91547322	0.20872916	-0.63164562	-0.33951676	-0.39340949	-0.53072721
0.78250694	0.20172313	-1.0008278	-0.17687139	-0.44728097	-0.14866769
0.60662675	0.21230029	-1.267204	0.37248927	0.027991939	-1.1460903
0.45684958	0.26740861	-1.4717858	0.72859931	0.049556244	-0.29567915
0.24828625	0.30282104	-1.6826632	-0.21862257	-0.29623368	-0.67080992
0.040651083	0.33637553	-1.8423564	0.0089255124	-0.31066811	-
-0.20490408	0.36324745	-1.9696271	0.16816133		
-0.46695542	0.34380668	-2.0465679	-0.32202426	-0.33790535	-0.54517728
-0.71454501	0.25440505	-2.0559807	-0.14913362	-0.348355	-0.16243625
-0.94357824	0.15406995	-2.0221634	-0.4828825	-0.28046277	-0.63560492
-1.1858053	0.087590344	-1.9679632	-0.18913078	-0.28376752	
-0.097183421	-0.40318072	-	0.0027529001		
0.75803667			-0.7821095	-0.30918688	-1.2701347
-0.037149828	-0.63851625	-	0.099642038	-0.26553947	0.65964437
0.58631736			0.59016585	-0.91020918	-0.68912011
0.0046613868	-0.73636812	-	0.81812048	0.12774454	-0.85084939
0.43667877			1.0674676	0.43594357	-0.99698877
0.072707832	-0.65521824	-0.29594469	-0.23564833	-0.59168929	-0.33902961
0.14740227	-0.41787595	-0.16318852	-0.75312996	-0.23035739	-1.5951381
0.033240333	-0.36901844	-0.87979263	0.35768414	-0.20220444	0.84354043
0.24170554	-0.77014869	-0.71388692	0.31778169	0.094035476	1.4408169
0.35084486	-0.89841461	-0.56272316	0.47709322	0.22631341	1.3169199
0.37811518	-0.76240933	-0.40162581	0.66927528	0.30702564	1.1434177
0.3428857	-0.36821702	-0.16779657	0.81045771	0.38275668	0.96582168
0.1600765	-0.30904171	-1.0021706	0.93621635	0.41678175	0.70619804
0.43476254	-0.73447251	-0.84815198	1.0236247	0.38330111	0.40031546
0.58869648	-0.90927035	-0.69407374	1.0397456	0.3312974	0.12521178
0.60700005	-0.73665005	-0.46762514	1.0274205	0.28830889	-0.12654036
0.5166862	-0.29148185	-0.18809979	0.980721	0.24136712	-0.39603853
0.30287546	-0.1986033	-1.0962799	0.93652821	0.21847111	-0.65346575
0.61778647	-0.49390683	-1.0203835	0.76804733	0.19538999	-1.0452428
0.82044387	-0.58914393	-0.82786244	0.61194068	0.21216109	-1.2567333
0.82469839	-0.47549632	-0.53241587	0.43755567	0.2543757	-1.4841655
0.66610003	-0.17609149	-0.23824693	0.21228492	0.30771703	-1.7112129
0.45893154	-0.040161289	-1.1621243	-0.034634709	0.34265518	-1.8829247
0.7056517	0.091489308	-1.0326509	-0.28996217	0.35224119	-1.9965905
0.82388753	0.13714409	-0.81799209	-0.55604517	0.29730973	-2.0451868
0.87668931	0.10370206	-0.58891255	-0.78486073	0.22453795	-2.0501597
0.78705853	-0.022180213	-0.32196519	-1.0183119	0.13503791	-2.0047684
ID=AMNH-FI_101496_A			-1.1923651	0.045622453	-1.9457909
			-0.052404039	-0.42498139	-
			0.77428913		
LM3=67			-0.003478833	-0.65445769	-
0.41686988	-0.052083455	-1.1473339	0.59496152		
0.77536392	-0.014340666	-0.31080982	0.066467673	-0.77542675	-0.47221494
-0.23846209	-0.34963864	-0.64301538	0.1370873	-0.6708951	-0.32325712
-0.015392654	-0.39767179	-	0.23011377	-0.40430996	-0.17240538
0.14591539					

0.095408387 -0.37866056 -0.91406119 -0.077810019 0.28213206 0.13414216
 0.2526564 -0.7698217 -0.72223556 -0.96196383 -0.3327845 -0.085980415
 0.3322069 -0.89919841 -0.57068604 0.94026786 0.68234146 -0.10753918
 0.38346142 -0.75981259 -0.40011153 1.1941562 0.98300451 -0.37473035
 0.42375755 -0.32682517 -0.1635901 1.2625372 0.72898406 -0.40354037
 0.21909507 -0.30454227 -1.0290523 1.2924857 0.50878203 -0.40211558
 0.4475649 -0.73071343 -0.856727 1.2663586 0.27335256 -0.37175393
 0.59016591 -0.9102093 -0.68912017 1.2050827 0.078902051 -0.32963109
 0.61976868 -0.71861619 -0.45962349 1.1063912 -0.091564238 -0.28024459
 0.58514571 -0.2387284 -0.17650889 0.97127581 -0.24558963 -0.22926664
 0.32720429 -0.19478647 -1.105191 0.8242979 -0.37717289 -0.18088317
 0.61414796 -0.49775553 -1.0182765 0.69097614 -0.48655117 -0.165663
 0.82030481 -0.60110629 -0.81619483 0.53822803 -0.6002667 -0.14373732
 0.83218455 -0.45372632 -0.51894534 0.27825314 -0.75016129 -0.13577175
 0.68525332 -0.13167122 -0.24028307 0.10632491 -0.80065852 -0.15832376
 0.41686988 -0.052083436 -1.1473339 -0.097391367 -0.86368972 -
 0.69024247 0.081106611 -1.0508734 0.17381763
 0.81812036 0.1277445 -0.85084933 -0.30135942 -0.90963346 -0.2216773
 0.87575948 0.10275318 -0.61213189 -0.5001595 -0.94145197 -0.27809334
 0.77536386 -0.014340634 -0.31080988 -0.71463549 -0.89426619 -0.33234215
 ID=AMNH-FI_101496_B -0.90302616 -0.80705708 -0.37213182
 -1.0618706 -0.70838326 -0.40359879
 LM3=67 -1.2010723 -0.55665201 -0.39869499
 -0.045981586 -0.58509499 - -1.3422961 -0.37956396 -0.37306976
 0.0042583942 -0.18150368 -0.097400121
 0.57575011 -0.25153434 -0.031254053 0.069225714
 -0.19739962 0.059543487 -0.095237359 0.016730515 0.24714527
 0.0059609413 -0.0091678603 0.11261459 0.33801633
 0.17451352 0.25970137 -0.0078263283 0.11566539 0.14691533 0.25854295
 -0.19772208 0.17982692 0.0028740168 0.27133188 0.15847428 0.063544661
 0.069881409 0.3489475 -0.0079860687 -0.16513349 -0.23311205 0.096667983
 -0.031099141 -0.5824734 - -0.026193751 -0.15313743 0.39592585
 0.083195686 0.077437565 -0.085092202 0.50312012
 0.58285558 -0.25244477 -0.10438299 0.20177698 -0.014238561 0.40236381
 -0.18369514 0.041079644 - 0.36457133 0.073254302 0.072864123
 0.023196697 -0.13479197 -0.35925564 0.091723047
 0.20247209 0.25995147 -0.045372486 0.031907562 -0.32293838 0.43563974
 -0.18619865 0.16796948 -0.02456975 0.17598069 -0.26799107 0.57751673
 0.10156679 0.32381722 -0.051486254 0.30250868 -0.16493276 0.42277452
 -0.33477753 0.17353056 -0.11554939 0.44819093 -0.02192257 0.061850213
 0.16330677 0.45408675 -0.12602663 -0.10068499 -0.48077455 0.061461311
 -0.82081628 -0.069314696 - 0.10266484 -0.55016476 0.32107237
 0.065358877 0.30858633 -0.51071805 0.40837234
 0.7570616 0.79767489 -0.10056794 0.45090598 -0.34860852 0.30095074
 0.17598069 -0.26799107 0.57751679 0.52874684 -0.12617052 0.031214947
 0.38832664 -0.66287923 -0.074247003 -0.045981571 -0.58509499 -
 0.48588139 -0.8493365 -0.22930288 0.0042583994

HOPKINS & PEARSON: 3D MORPHOMETRICS IN TRILOBITES

0.20345508 -0.71178663 -0.0555248
 0.38832662 -0.66287917 -0.074246995
 0.53045011 -0.52742136 -0.068544902
 0.57575029 -0.25153428 -0.03125402
 ID=AMNH-FI_101497_A

LM3=67

-0.040748775 -0.59155941 -
 0.0099821091
 0.57333374 -0.25192797 -0.022981048
 -0.19453728 0.056325004
 0.0044481754
 0.16822076 0.27001783 -0.0087753534
 -0.19586635 0.18484829 0.013189673
 0.072744489 0.33240905 -
 0.0033937693
 -0.050725505 -0.58000404 -
 0.10269165
 0.5956434 -0.26118472 -0.10736322
 -0.20624575 0.050679628 -
 0.039106131
 0.17330295 0.26372433 -0.042209625
 -0.20283729 0.1789913 -0.033305168
 0.057835937 0.32311562 -0.01941824
 -0.34325135 0.1693441 -0.11058992
 0.16401553 0.45524225 -0.11993313
 -0.89001745 -0.097392164 -
 0.05662483
 0.74055457 0.77996325 -0.07345587
 0.16202319 -0.25602275 0.58098459
 0.39889121 -0.65529925 -0.081782103
 0.49205309 -0.8467254 -0.22504652
 -0.075135946 0.28242466 0.13523722
 -0.95664787 -0.33790818 -
 0.078958035
 0.94412327 0.69153565 -0.11253405
 1.2041376 0.98692721 -0.3831296
 1.2638845 0.78163356 -0.40864563
 1.2853394 0.57631916 -0.40413713
 1.2812698 0.39540267 -0.38858247
 1.236707 0.17453445 -0.35107064
 1.1521275 -0.025599279 -0.30139518
 1.0192866 -0.18581088 -0.24410629
 0.88387537 -0.31006381 -0.19818258
 0.7263639 -0.44708997 -0.16486025
 0.57635856 -0.56578153 -0.15208173
 0.23419803 -0.75825477 -0.13935566

0.048105419 -0.82398182 -0.15826988
 -0.15332079 -0.88576984 -0.19199038
 -0.365457 -0.91983104 -0.23653555
 -0.56928933 -0.93134278 -0.29903603
 -0.77519321 -0.8783834 -0.36003494
 -0.95600027 -0.78048605 -0.38269091
 -1.0953295 -0.65887249 -0.38620043
 -1.2437434 -0.51812154 -0.40434694
 -1.3491039 -0.3791146 -0.37700605
 -0.16363975 -0.039647359
 0.097971663
 -0.088819228 0.049841743 0.25785416
 -0.01549144 0.12213282 0.32758108
 0.11028669 0.15206513 0.25757965
 0.27021068 0.15296815 0.069428526
 -0.16344911 -0.2008224 0.10127787
 -0.019901667 -0.1355824 0.40544373
 0.086771727 -0.082982913 0.50489068
 0.2042705 -0.013444486 0.39862984
 0.36870894 0.074514702 0.068448141
 -0.14474188 -0.34725553 0.08539407
 0.027227318 -0.31233555 0.43430415
 0.1620232 -0.25602275 0.58098453
 0.30144265 -0.1590286 0.42039189
 0.45233923 -0.018928565 0.053011857
 -0.11087331 -0.48146829 0.052244626
 0.083672553 -0.53272098 0.3216815
 0.28396964 -0.49597076 0.42527974
 0.44479358 -0.33926454 0.31167901
 0.53278691 -0.12368453 0.027923588
 -0.040748727 -0.59155935 -
 0.009982137
 0.2114131 -0.71103919 -0.057690449
 0.39889121 -0.65529925 -0.081782103
 0.53357053 -0.52068579 -0.067960426
 0.57333374 -0.25192797 -0.022981049
 ID=AMNH-FI_101497_B

LM3=67

0.71002096 0.41303641 0.032865405
 0.2866042 0.51174033 0.079775214
 0.58525556 0.074086376 0.12713611
 0.30449104 0.12240697 0.17121482
 0.53112596 0.0028339853 0.1597451
 0.33588207 0.038625117 0.1905117
 0.70171779 0.40667826 1.0728836e-06
 0.26379439 0.49915308 0.056152225

0.57783562	0.079280272	0.098567486	0.5521754	0.35779613	0.41011351
0.30150995	0.1245568	0.13980722	0.43748116	0.36709756	0.34343588
0.52231991	0.0062942603	0.13600183	0.28712058	0.3729791	0.16808122
0.33839634	0.040294878	0.16603279	0.7050395	0.35541257	0.083714955
0.60669327	-0.046858281	0.060126677	0.65200531	0.4470365	0.21862586
0.23012421	0.025728324	0.12740526	0.56667531	0.519557	0.29011574
0.98581195	-0.12535653	0.0038197041	0.42576835	0.50317383	0.25403708
-0.1675832	0.11324688	0.18951483	0.28295356	0.44691327	0.13416456
0.5521754	0.35779616	0.41011357	0.71002096	0.41303641	0.032865401
0.51875639	0.59849882	-0.021183312	0.63040131	0.55197555	-0.017901313
0.52507329	0.69674987	-0.13398719	0.51875639	0.59849888	-0.021183331
0.45287636	0.003711222	0.22248638	0.40702999	0.61141586	0.0095386505
1.1481144	-0.092086963	-0.05500102	0.28660423	0.51174027	0.079775162
-0.29393804	0.22752638	0.17588806	ID=AMNH-FI_101498_A		
-0.39266449	0.22320975	0.13021994	LM3=67		
-0.36849838	0.32805943	0.071337223	0.70064569	0.45201108	0.021381795
-0.31876588	0.41325942	0.037335992	0.28770331	0.51295978	0.079614401
-0.26519781	0.47936931	0.033615828	0.58019787	0.059023645	0.13968551
-0.18948233	0.54477262	0.012150764	0.29642981	0.12278041	0.16245425
-0.096526384	0.59158361		0.52708161	0.0028689969	0.16564798
0.0026168823			0.3342213	0.040787909	0.18856013
0.023991704	0.62096173	0.0029950142	0.69363678	0.44534668	-0.0062859058
0.14104164	0.63079113	-0.0033090115	0.25820747	0.49250224	0.056426048
0.24696004	0.62769878	-0.0039253235	0.57747525	0.067671277	0.096658349
0.37594032	0.60865384	-0.015556812	0.29054457	0.12821305	0.13808239
0.62749076	0.55376041	-0.052995443	0.52745283	0.006048738	0.13239539
0.74350417	0.5094915	-0.074163437	0.3298403	0.043422814	0.16391098
0.85443366	0.46431258	-0.10192096	0.60223621	-0.040443663	0.056133218
0.94482124	0.40991825	-0.13186193	0.22741312	0.028450614	0.12505861
1.0312088	0.33453581	-0.15259814	1.0125985	-0.14045025	0.0042808838
1.1056371	0.24252775	-0.17074072	-0.18417063	0.10947108	0.19573691
1.1479962	0.15630852	-0.19889367	0.55439216	0.34542999	0.41080117
1.1898758	0.054315597	-0.18879533	0.51431894	0.60257834	-0.016698599
1.2100327	-0.038883667	-0.16892052	0.52580124	0.6993522	-0.1349178
1.2205516	-0.12859963	-0.15469742	0.43965113	0.0062416466	0.22519994
0.62029541	0.15258102	0.14269388	1.1421552	-0.079364106	-0.043376446
0.55795562	0.12127598	0.26773897	-0.26023769	0.2381437	0.19875669
0.49071914	0.11198302	0.32411054	-0.39770424	0.22534493	0.12329435
0.40653139	0.14142044	0.29578212	-0.36653829	0.33542797	0.064569235
0.30984351	0.20461944	0.18689884	-0.30879241	0.43742156	0.033329487
0.6633051	0.22519137	0.14083779	-0.22747719	0.51681978	0.021962404
0.59038478	0.23254827	0.31538087	-0.12470961	0.57428586	0.019761086
0.5258202	0.2416589	0.38631472	-0.02528429	0.60791981	0.0067965984
0.42842194	0.25813943	0.37513256	0.086565256	0.62903231	0.0032174587
0.29416567	0.29303515	0.18795064	0.20186013	0.62711	0.00436759
0.69015533	0.29329216	0.12002174	0.31011134	0.61312771	-0.0041952133
0.62290353	0.32657617	0.30974168			

HOPKINS & PEARSON: 3D MORPHOMETRICS IN TRILOBITES

0.39845949	0.62373126	-0.0040612221	-0.074166954	0.39842656	-0.22473609
0.62096822	0.55896515	-0.050870299	0.23237017	0.20427556	-0.23734152
0.74037778	0.50982308	-0.073061466	-0.19255686	0.10756062	-0.11599731
0.84969211	0.46684605	-0.10154366	-0.00061756372	-0.021050738	-
0.94532764	0.40958914	-0.13225603	0.13002253		
1.0249059	0.34243822	-0.15917313	-0.20575464	0.049222134	-0.10475075
1.0886641	0.26395947	-0.18093514	-0.060091615	-0.058090758	-
1.1457908	0.16768822	-0.20315742	0.11285627		
1.1912345	0.051803097	-0.19572771	-0.25292939	0.048930835	-
1.210665	-0.040019065	-0.16968083	0.035318732		
1.2202672	-0.13154095	-0.14674222	-0.040703177	-0.11539979	-
0.61603981	0.15869513	0.16096364	0.053800464		
0.55326182	0.12336122	0.2777555	-0.59638989	0.28442141	-0.00251472
0.48781097	0.11899941	0.33005789	0.32390195	-0.34476045	-0.074024916
0.41756457	0.15548199	0.3059628	-0.086699814	0.09476345	-0.47026765
0.33744681	0.22394745	0.21948357	0.15665646	0.41685379	-0.25677431
0.66749024	0.24498072	0.14466327	0.21268666	0.51373166	-0.24234724
0.58925039	0.24144331	0.32347158	-0.18216532	-0.056757819	-
0.5277437	0.24999513	0.38766688	0.15912819		
0.44360042	0.25795335	0.37574404	-0.65109247	0.40309137	-0.010396659
0.32423884	0.30199075	0.21672605	0.46474537	-0.34955314	-0.085807323
0.69209868	0.32414123	0.11358485	0.53947544	-0.38345399	-0.040601492
0.62301439	0.33656892	0.31210178	0.5787788	-0.27790585	-0.066925287
0.55439216	0.34542999	0.41080117	0.59877443	-0.18347722	-0.091052294
0.44870862	0.36069265	0.35384801	0.59590054	-0.09016306	-0.11810803
0.31369406	0.37616289	0.19036585	0.56863344	-0.0057026497	-0.1548593
0.7059958	0.39307636	0.073576443	0.5187313	0.083956465	-0.18904567
0.6527124	0.45014232	0.21446531	0.45634297	0.15682942	-0.21960926
0.57724929	0.49575564	0.30580026	0.38699198	0.21684258	-0.24224067
0.4312726	0.48608077	0.27158442	0.31753251	0.27605197	-0.24555087
0.30035669	0.44682589	0.14601314	0.2561729	0.32399434	-0.26021075
0.70064574	0.45201111	0.021381831	0.051441416	0.45848691	-0.24645233
0.61678439	0.5631538	-0.015397494	-0.03229779	0.51005661	-0.22418523
0.51431894	0.60257834	-0.016698604	-0.11768317	0.56155205	-0.19482028
0.40372181	0.61127794	0.014989818	-0.20694613	0.60371941	-0.15957439
0.28770334	0.51295972	0.079614334	-0.30450124	0.62561303	-0.12320364
ID=AMNH-FI_101498_B			-0.39651418	0.63468784	-0.083183646
			-0.5027892	0.61813396	-0.032301188
			-0.5699662	0.58241272	-0.010479212
LM3=67			-0.64536166	0.53944147	0.031384945
-0.091518462	0.40416974	-0.25315714	-0.71532524	0.47726911	0.069949389
0.23431778	0.20544565	-0.27403569	-0.2080352	0.16861255	-0.19542365
-0.21796548	0.11498406	-0.12666285	-0.19679588	0.058431897	-0.27637985
-0.0013964884	-0.045703709	-	-0.16011642	-0.010171595	-
0.14418387			0.31212068		
-0.22613668	0.041311089	-0.1373955	-0.0797958	-0.029253766	-0.29070714
-0.072648495	-0.076718472	-			
0.13403392					

0.037851479 -0.0035879163 -
 0.21732518
 -0.20183146 0.23582758 -0.22863981
 -0.16293389 0.10773476 -0.35787931
 -0.12375666 0.044369612 -0.40757841
 -0.045363333 0.018239528 -
 0.37245983
 0.08990097 0.036032997 -0.24323897
 -0.17769916 0.29638901 -0.2484244
 -0.13746364 0.17449053 -0.40000886
 -0.086699829 0.094763428 -
 0.47026771
 0.011689621 0.074668489 -0.40759388
 0.14382532 0.076400161 -0.26630333
 -0.14536248 0.35626578 -0.25876415
 -0.079805925 0.29609555 -0.39221621
 0.006132958 0.22402872 -0.46951723
 0.10349887 0.16847607 -0.40056592
 0.1958691 0.12673873 -0.28433481
 -0.091518462 0.40416974 -0.25315714
 0.053614281 0.44931963 -0.26191285
 0.15665644 0.41685376 -0.25677428
 0.22205636 0.34075311 -0.27351058
 0.23431778 0.20544563 -0.27403569
 ID=AMNH-FI_101499_A

 LM3=67
 -0.081627011 0.40677187 -0.26005566
 0.23165849 0.20843108 -0.27714658
 -0.21755832 0.1122038 -0.1281718
 -0.0034666881 -0.048490167 -
 0.14461517
 -0.22397202 0.032735068 -0.12257016
 -0.05921559 -0.076797418 -
 0.13250577
 -0.088524863 0.4080871 -0.21215308
 0.24751529 0.19915298 -0.23480093
 -0.19690371 0.10310313 -0.11002088
 0.0022580028 -0.035936914 -
 0.12306905
 -0.20707512 0.027636275 -
 0.089962244
 -0.043169498 -0.070687421 -
 0.10769486
 -0.26136947 0.057126913 -
 0.033361614

 -0.044398785 -0.11476116 -
 0.054860979
 -0.592583 0.29230085 0.0030097961
 0.3144995 -0.33721247 -0.07170397
 -0.091850489 0.091257527 -
 0.46590984
 0.15665646 0.41685379 -0.25677431
 0.23792171 0.50949746 -0.24299121
 -0.18719003 -0.051042978 -
 0.15854901
 -0.66008544 0.41500187 0.002393961
 0.48629111 -0.35408279 -0.083360434
 0.54076087 -0.39282742 -0.039537191
 0.5736841 -0.29692894 -0.060237765
 0.5956403 -0.21084903 -0.086943865
 0.59396034 -0.10623379 -0.12491918
 0.57456839 -0.015327424 -0.15377545
 0.53034616 0.064023301 -0.18289757
 0.46859327 0.1379905 -0.21408844
 0.40021905 0.20851958 -0.23731089
 0.31263125 0.27605817 -0.24848366
 0.23866174 0.33586684 -0.26027107
 0.040888816 0.47211424 -0.23203087
 -0.050471187 0.52199769 -0.21151495
 -0.14278942 0.57721305 -0.17923379
 -0.24009457 0.61397868 -0.14329159
 -0.33616257 0.63167506 -0.10847497
 -0.43093619 0.63279217 -0.069157362
 -0.50343537 0.61503702 -0.045403242
 -0.56655365 0.5868125 -0.0072860718
 -0.64032888 0.54547566 0.029855728
 -0.70821059 0.48772681 0.082388639
 -0.20877123 0.15219603 -0.19925797
 -0.19749646 0.053704944 -0.27155635
 -0.16518959 -0.0096648922 -
 0.30464485
 -0.086293928 -0.034409273 -
 0.28795978
 0.033487599 -0.0071904599 -
 0.21290521
 -0.20142546 0.22596471 -0.2303586
 -0.16518784 0.11032856 -0.35340494
 -0.12399811 0.042930543 -0.40670258
 -0.043103449 0.01735292 -0.36588946
 0.094356202 0.032150149 -0.23893818
 -0.17696184 0.29293442 -0.25018406
 -0.13998391 0.17602056 -0.39570981

HOPKINS & PEARSON: 3D MORPHOMETRICS IN TRILOBITES

-0.091850504	0.09125752	-0.46590984	0.19776562	0.13104524	-0.28395018
0.013152918	0.07240016	-0.4050644	-0.081627011	0.40677187	-0.26005566
0.14995545	0.076635987	-0.26324135	0.057128653	0.44796425	-0.2636216
-0.13872948	0.35416684	-0.26214206	0.15665644	0.41685376	-0.25677428
-0.08266966	0.28744009	-0.39514619	0.22014111	0.34203196	-0.27371413
-0.0066402983	0.20917295	-	0.23165849	0.20843107	-0.27714658
0.47230491			ID=AMNH-FI_101499_B		
0.099103659	0.16395818	-0.40148386			