

APPENDIX 1.7.0

Type a11/b(1,2,3)±6±8±10±12

A multicusp form with cusps of unequal size.

Tofino Basin subtype a11/

a11/b2/c2/d0/e1/f3/g1/h2/i4+8/j4 or
a3,4/b2/c2/d4+10/e2,3/f0/g0/h2/i1/j2+11/k3/l0/m0/n0 undescribed
elasmobranch dermal denticle or tooth, Form B

APPENDIX 1.7.1

Type a11/b(1,2,3)±6±8±10±12

A multicusp form with cusps of unequal size.

c. Arrangement of projections (cusps): ^{9, 19, 31}

0. indeterminate ^{9, 19}

1. widely spaced ^{9, 19}

2. close together ^{9, 19}



d. Shape of base (root) from which cusps arise: ^{9, 19, 31}

0. indeterminate ^{9, 19}

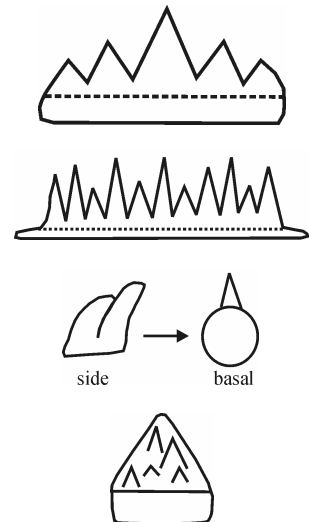
1. none of the following ^{9, 19}

2. elongate and bar-shaped ^{9, 19}

3. flat and plate-like ^{9, 19}

4. circular to subcircular in outline, but not flattened ^{9, 19}

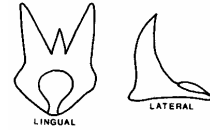
5. thick and polygonal ^{9, 19}



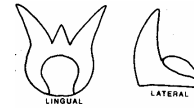
6. curved ^{9, 19}



7. circular to subcircular and flat with a button-like process ¹⁹



8. circular to subcircular and thick with a button-like process ¹⁹



9. flat and star-shaped ¹⁹



e. Shape of projections (cusps): ^{9, 19, 31}

0. indeterminate ^{9, 19}

1. triangular, not curved ^{9, 19}



2. triangular, curved lingually ^{9, 19}



3. triangular, curved laterally (mesially or distally) ^{9, 19, 31}



4. broad and blunt ^{9, 19}

5. none of the above ¹⁹



f. Number of projections (cusps) ^{9, 19, 31}

Recorded as numbers ¹⁹

g. Position of projections (cusps) ^{9, 19, 31}

0. indeterminate ^{9, 19}

1. linearly arranged ^{9, 19}

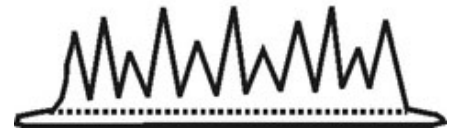


2. not linearly arranged ^{9, 19}



h. In linear forms, geometry of cusps ^{9, 19, 31}

0. indeterminate or none of the following ^{31, 32}



1. cusps of different sizes with no order to their distribution ^{9, 19}



2. medial cusp with lateral cusps decreasing in size from medial cusp to edge of element; symmetrical ^{9, 19}



3. medial cusp with smaller lateral cusps, one of lateral cusps larger than lateral cusp nearest medial cusp; symmetrical ^{9, 19}

4. posterior cusp largest, succeeding anterior cusps decreasing in size; asymmetrical ^{9, 19}



5. medial cusp smaller than lateral cusps; symmetrical ^{9, 19}



i. Crown labial surface features ³¹

0. indeterminate ³¹

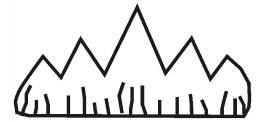
1. absent (smooth) ^{31, 32}



2. lines or ridges multiple (greater than number of cusps), long (greater than 1/2 height of crown), and approximately vertical ^{31, 32}



3. lines or ridges multiple (greater than number of cusps), short (less than 1/2 height of crown), and approximately vertical ^{31, 32}



4. lines or ridges few (same as or less than number of cusps), long (greater than 1/2 height of crown), and approximately vertical ^{31, 32}



5. lines or ridges few (same as or less than number of cusps), short (shorter than 1/2 height of crown), and approximately vertical ^{31, 32}



6. one node below each cusp on crown shoulder ^{31, 32}



7. more than one node below each cusp on crown shoulder ^{31, 32}



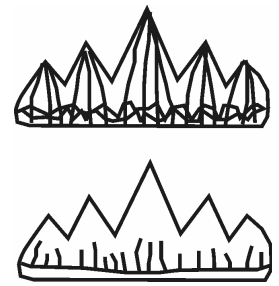
8. prominent peg (protrusion) on crown shoulder below principal cusp ^{31, 32}



9. rounded protrusion (not prominent peg) on crown shoulder below principal cusp ^{31, 32}



10. Longitudinal line(s) or ridge(s) on and traversing lower crown shoulder, may be networked, may be discontinuous ³¹,
³²



- j. Crown lingual surface features. Refer to characteristics: “i” 0 to 10 (above) ³¹

Refer to characteristics: “i” 0 to 10 (above) ³¹